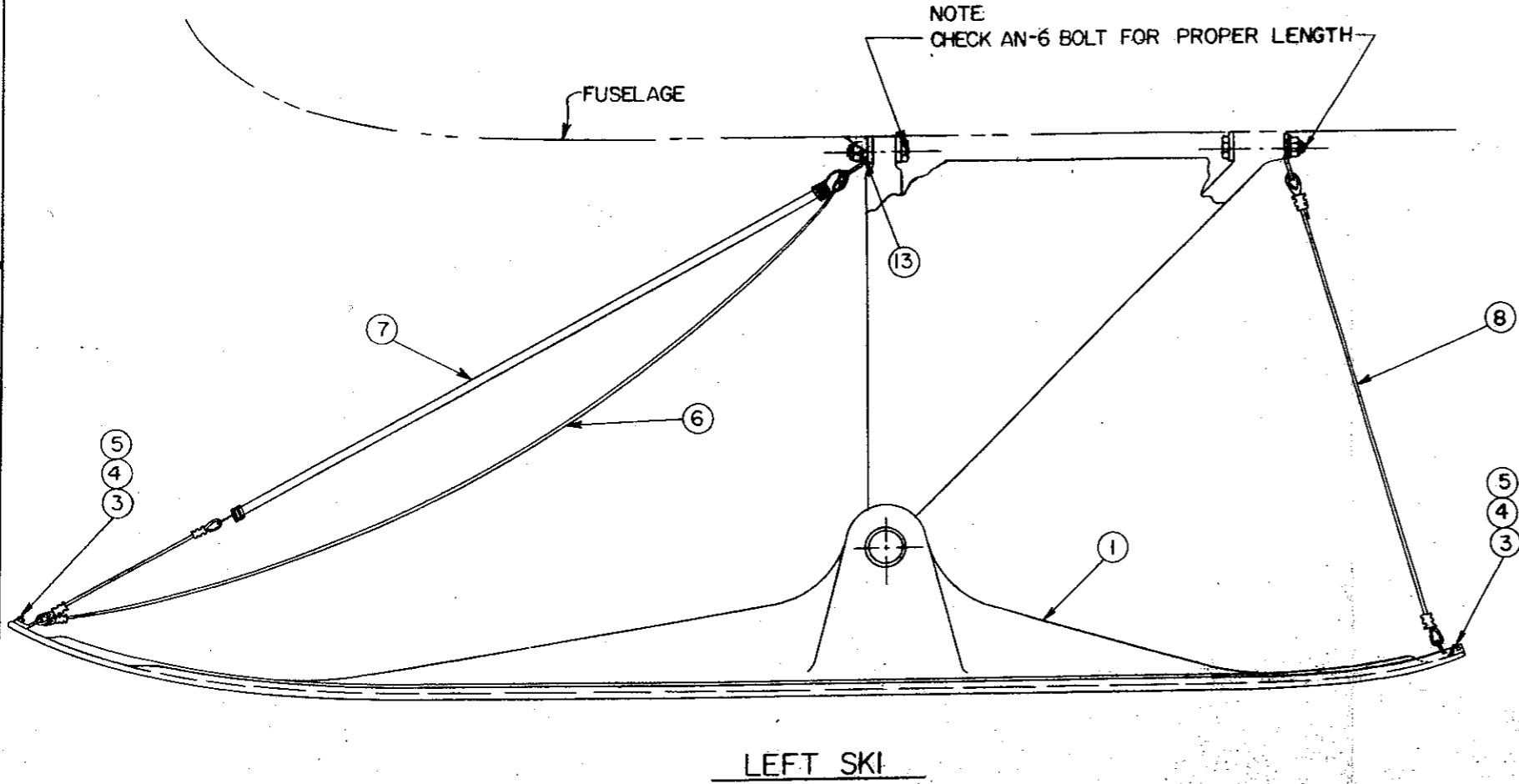


**NOTE**  
 1. IN SOME INSTALLATIONS THE WELD ON THE INNER BEARING STOP MAY HAVE TO BE FILLED FOR CLEARANCE  
 2. UNIVERSAL CABLE ASSY. 105-1 MAY BE USED IN PLACE OF PARTS L2000-PA-18 -1, 8-2. THIS ASSY. USES SHOCK RING 8020.



NO.	QTY	PART NO.	DESCRIPTION	STOCK SIZE	MAT'L	MAT'L SPEC.	FINISH	ENG. ACT.	ZONE
14	2	AN960-1616SPL	WASHER						
13	2	L2500-PA-18-4	SPACER						
12	2	H-241 SPL	BRZ BEARING						
11	2	H-235 SPL.	BRZ BEARING						
10	2	-5	SPACER						
9	2	-4	SPACER						
8	2	-3	CHECK CABLE ASSY	32 3/4	THIMBLE TO THIMBLE				
7	2	-2	BUNGEE AS SY	34	SPRING END TO SPRING END				
6	2	-1	SAFETY CABLE ASSY	54	THIMBLE TO THIMBLE				
5	8	AN960-416	WASHER						
4	8	AN365-428	NUT						
3	8	AN4-6A	BOLT						
2	1	L1650A-2	RIGHT SKI	NOT SHOWN					
1	1	L1650A-1	LEFT SKI						
×	1	L1650-PA-18	SKI KIT	WT. 48 LBS					
		OR							
2	1	L2000A-2	RIGHT SKI	NOT SHOWN					
1	1	L2000A-1	LEFT SKI						
×	1	L2000-PA-18	SKI KIT	WT. 56 LBS	CG 6" AHEAD OF MAIN GEAR AXLE				

**ONE-HALF SCALE  
 COPY OF ORIGINAL DWG.**

NOTE:  
 USE L1650A ON J3, PA-II, AND PA-18-90

INSTALLATION PER STC SA214AL

THIS DRAWING INCLUDES INFORMATION PROPRIETARY TO AIRGLAS ENGINEERING CO., INC. AND SHOULD BE USED TO MAKE, COPY OR REPRODUCE WITHOUT PERMISSION OF AIRGLAS ENGINEERING CO., INC.

UNLESS OTHERWISE SPECIFIED DIMENSIONS ARE IN INCHES TOLERANCES ON		CONTRACT NO.		AIRGLAS ENGINEERING CO., INC. ANCHORAGE, ALASKA	
DECIMALS	ANGLES	SPEC. CONTROL NO.	DR	DATE	SKI INSTALLATION L1650 & L2000 FOR PA-18
X*.1	XX*.03	XXX*.00	X*.5°	CHK	
J3	HEAT TREAT	STRUCT	WTS		SIZE
PA-11,12,14,18	MAT'L GOV. SPEC.				CODE IDENT. NO.
NEXT ASSY USED ON	STEEL MIL-H-6875				17564
	ALUM MIL-H-6088				L2000-PA-18
APPLICATION	MAG. CAST. MIL-H-6857				SCALE 1/4"