

Supplemental Type Certificate

Number SA222AL

This certificate, issued to Airglas Engineering Co., Inc.
Box 1254
Anchorage, Alaska

certifies that the change in the type design for the following product with the limitations and conditions therefor as specified hereon meets the airworthiness requirements of Part 3 of the Civil Air Regulations.

Original Product — Type Certificate Number: 3A23
Make: Maule
Model: M-4, 4C, 4S, 4T, M-4-210, 210C, 210S, and 210T

Description of Type Design Change:

Installation of Airglas Engineering, Model L2500A wheel replacement skis per Airglas Engineering Drawing L2500-M-4 dated April 29, 1966.

Limitations and Conditions:

This approval should not be extended to other specific aircraft of this model on which other previously approved modifications are incorporated unless it is determined that the inter-relationship between this change and any of those previously approved modifications will introduce no adverse effect upon the airworthiness of that aircraft.

This certificate and the supporting data which is the basis for approval shall remain in effect until surrendered, suspended, revoked, or termination date is otherwise established by the Administrator of the Federal Aviation Agency.

Date of application: April 30, 1966

Date issued:

Date of issuance: December 5, 1966

Date amended:



By direction of the Administrator

R. W. Stephens
(Signature)

R. W. Stephens, Chief
Engineering and Manufacturing Branch
Alaskan Region (Title)

Any alteration of this certificate is punishable by a fine of not exceeding \$1,000, or imprisonment not exceeding 3 years, or both.

This certificate may be transferred in accordance with FAR 21.47.

SUPPLEMENT TO FAA APPROVED
AIRPLANE FLIGHT MANUAL

FAA Identification

Maule Model M-4

Serial No. _____

This Supplement must be attached to FAA Approved Airplane Flight Manual when Landes-Airglas Model L-2500A Main Skis are installed.

PERFORMANCE INFORMATION SECTION.

Take-off: Under the most favorable conditions of smooth packed snow at temperatures approximating 32° F the ski-plane take-off distance is approximately 10 percent greater than that shown for the landplane.

Landing: Under the most favorable conditions of smooth packed snow at temperatures approximating 32° F. the ski-plane landing distance is approximately 20 percent greater than that shown for the landplane.

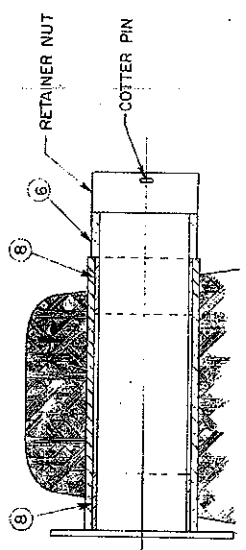
NOTE: In estimating distances for other conditions, caution should be exercised in that other temperatures or other snow conditions may either decrease or increase these distances.

Date: December 5, 1966

FAA APPROVED

Robert W. Stephens

Chief, Engineering and Manufacturing Branch Alaskan Region

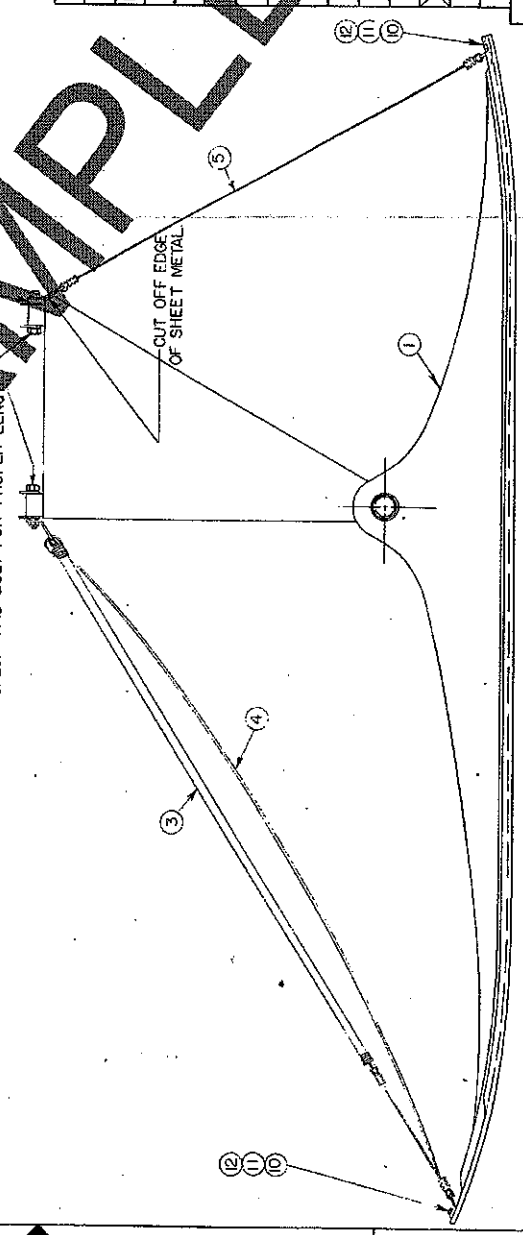


SKI INSTALLED ON AXLE
FULL SCALE

NOTE:
1. UNIVERSAL CABLE ASSY. 105-3 MAY BE USED IN PLACE OF PARTS L2500-M-4-1, 2. THIS ASSY. USES SHOCK RING 8020.

SAMPLE

NOTE:
CHECK ANG BOLT FOR PROPER LENGTH



LEFT SKI

INSTALLATION PER STC SA222AL

NO	QTY	PART NO.	DESCRIPTION	STOCK SIZE	MAT'L	MAT'L SPEC	FINISH	ZONE
12	8	AN960-416	WASHER					
11	8	AN364-428	NUT					
10	8	AN4-6A	BOLT					
9								
8	4	267 SPL	BEZ. BEARING					
7	2	L2500-M-4	SPACER					
6	2	2000-7-11-3	SPACER					
5	2	-3	CHECK CABLE ASSY					
4		-2	SAFETY CABLE ASSY					
3	2	-1	BUNCEE ASSY					
2	1	L2500A-2	RIGHT SKI		NOT SHOWN			
1	1	L2500A-1	LEFT SKI					
1	1	L2500-M-4	SKI KIT	WT. 66 LBS.	86" AHEAD OF MANGEAR AXLE			

LIST OF MATERIALS

UNLESS OTHERWISE SPECIFIED CONTRACT NO. AIRGLAS ENGINEERING CO., INC.
DIMENSIONS ARE IN INCHES SPEC. CONTROL NO. ANCHORAGE ALASKA
TOLERANCES ON DECIMALS ANGLES DR \$ L2500 SKI INSTALLATION FOR THE MAULE M-4
M-J 304 SS 30000 X4 5" CHR 21/24 STRUCT WTS
M-4-200CST MAT'L GOV SPEC
MAULE M-4CST MIL-H-6875
HEAT TREAT ALUM MIL-H-6875
HEAT TREAT MAGCAST. MIL-H-6867

SCALE 1/4"=1'

SHEET 1 OF 1