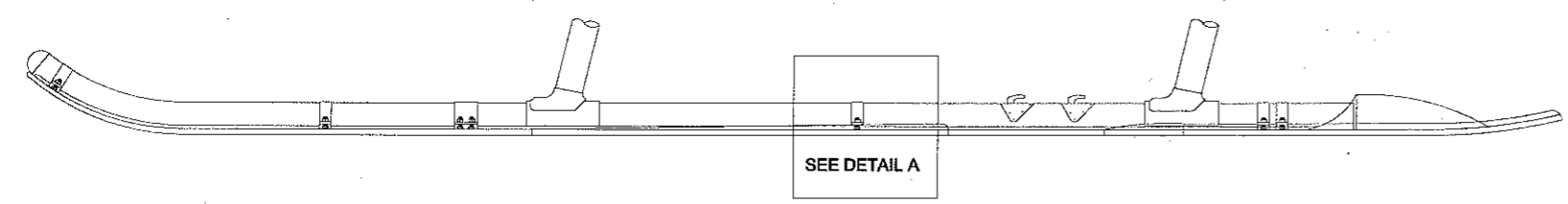
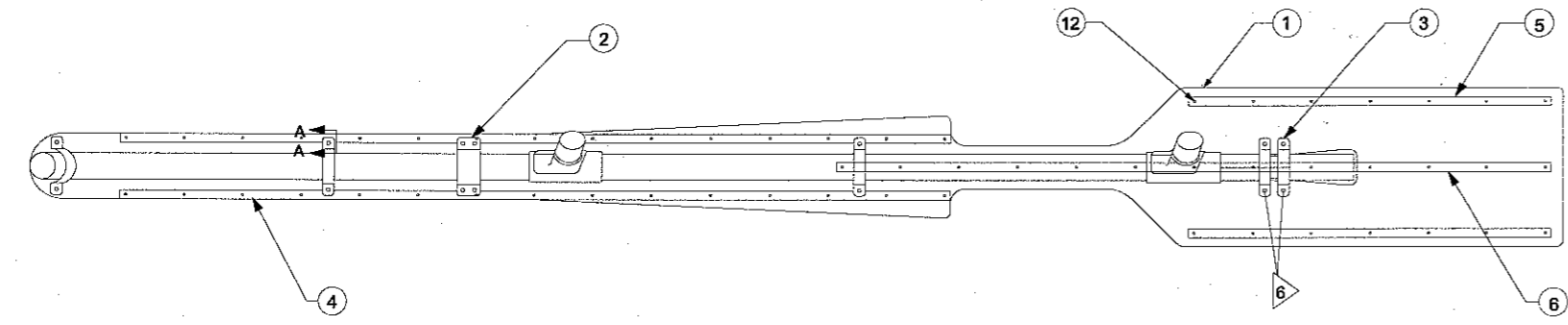


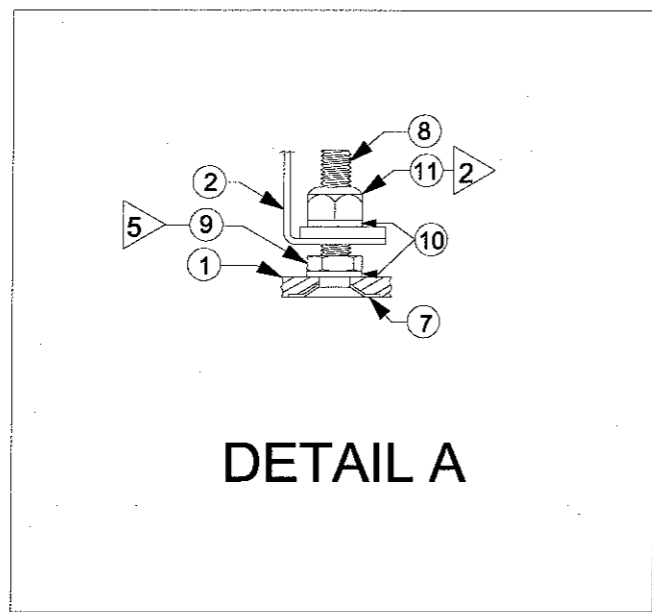
REVISIONS				
ZONE	LTR	DESCRIPTION	DATE	APPROVED
	A	ADD 369E,F,FF	03 JUN 1989	WKL
	B	ADD CENTER AFT RUNNER	07 AUG 1990	WKL
	C	ELECTRONIC DRAWING CREATED	03 FEB 2011	CED

**NOTES**

1. REMOVE SHOES FROM SKID TUBE PRIOR TO THE INSTALLATION OF SKIS.
2. TORQUE TO 36 INCH POUNDS ± 5 INCH POUNDS
3. THIS INSTALLATION IS TO BE USED ON HIGH SKID (369D292114) GEAR ONLY
4. QUANTITIES SHOWN ARE FOR 1 SKI KIT (i.e. TWO (2) SKIS TOTAL)
5. TORQUE TO 60 - 85 INCH POUNDS
6. ON TWO AFT SCREWS USE AN365-524 NUTS INSTEAD OF AN316-524 NUTS



TYPICAL SKI INSTALLATION, LEFT SKI IS SHOWN ATTACHED TO LANDING GEAR



**DETAIL A**

TYPICAL SKI INSTALLATION, LEFT SKI IS SHOWN INSTALLATION IN ACCORDANCE WITH STC SH654AL - 369HD

NO.	QTY	CODE IDENT. NO.	PART NUMBER	DESCRIPTION	STOCK SIZE	MATERIAL	MATERIAL SPEC.	UTS 1000	FINISH	CALC. UNIT	ACT. WT	ZONE
12	114		SSB-6-8	RIVET								
11	32		AN365-524	NUT								
10	56		AN960-516	WASHER								
9	24		AN316-524	SHEAR NUT								
8	28		NAS514P524-24	SCREW								
7	28	17564	30185	WASHER								
6	2	17564	L2700SA341-4	RUNNER								
5	4	17564	L2700-FH1100-5	RUNNER								
4	4	17564	L2700-FH1100-4	RUNNER								
3	10	17564	L2700-369-3	STRAP ASSY.								
2	4	17564	L2700-369-2	STRAP ASSY.								
1	2	17564	L2700-369HD-1	SKI								CAN BE A LEFT OR RIGHT SKI
1	1	17564	L2700-369HD	SKI KIT								SKI KIT WEIGHT = 54 lbs @ Fuselage Station XXX

LIST OF MATERIALS												
UNLESS OTHERWISE SPECIFIED DIMENSIONS ARE IN INCHES DECIMALS X ± .1 ANGLES .XX ± .03 X' ± 2" .XXX ± .010						CONTRACT NO.		<b>Airglas, Inc.</b> Anchorage, Alaska				
						SPEC. CONTROL NO.						
HEAT TREAT MATERIAL GOV. SPEC. STEEL MIL - H - 6875 ALUM. MIL - H - 6088 MAG. CAST MIL - H - 6857						Approved by: WKL		SKI INSTALLATION FOR HUGHES 369D, E, F, FF HELICOPTER				
369D,E,F,FF						Checked by: WKL						
NEXT ASSY. USED ON						Drawn by: WKL		Size	Code Ident.No.	REV		
APPLICATION						Date: 18 MAY 1978		B	17564	L2700-369HD		C
						Scale: Do not scale				Sheet 1 of 1		