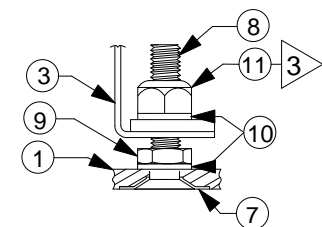
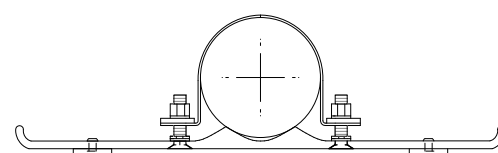


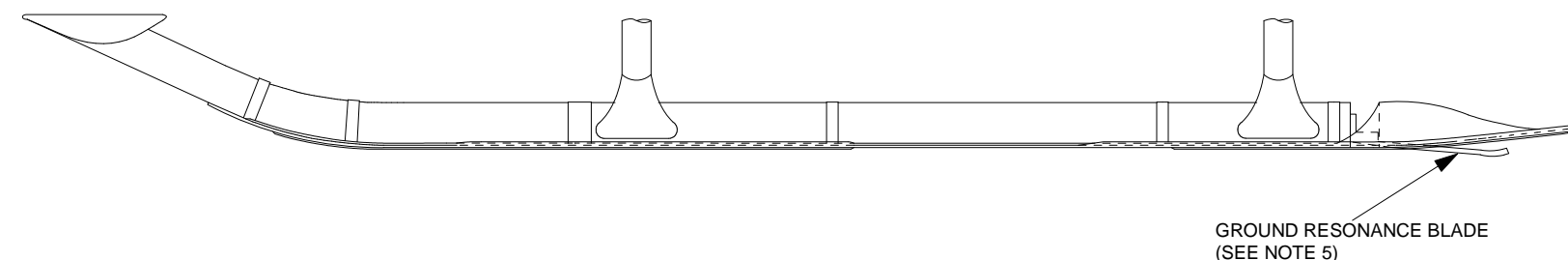
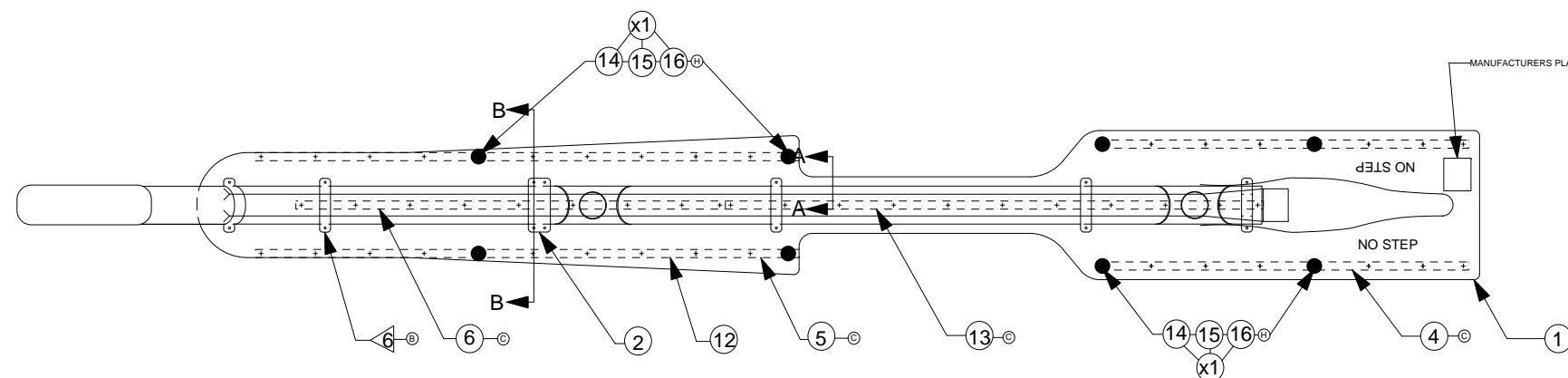
REVISIONS				
ZONE	REV	DESCRIPTION	DATE	APPROVED
	A	ADD AS350B	2-25-82	WKL
	B	ADD TWINSTAR AS355E & F ADD FWD CENTER RUNNERS ADD NOTE 6	4-16-82	WKL
	C	ADD AS350B1, B2, BA, REDRAWN, NOTES ADDED, 2 RUNNERS ADDED (1, 4, 5)	10-23-92	WKL
	D	AS350B3 ADDED	10-20-00	JWL
	E	ADDED EASA VALIDATION FOR AS350B3 SUPERCEDED RIVET P/N SEE P/N 12	14 JAN 2008	CED
	F	TRANSPPOSED FIND NUMBER 4 & 5 TO MAKE CORRECT CALL-OUT	13 MAY 2008	CED
	G	CHANGED TORQUE VALUE TO 30 INCH POUNDS SEE NOTE #3 ADDED MS21042-5 TO B.O.M. ITEM #11 ADDED C.G. LOCATION and WEIGHT TO B.O.M. ITEM#1	4 FEB 2011	CED
	H	ADDED DRAG BOLTS TO B.O.M. ITEM #14 SEE NOTE #7 CHANGED C.G. LOCATION and WEIGHT ITEM#1	1 SEP 2011	CED



DETAIL A-A
TYP. INSTALLATION



SECTION B-B (not to scale) ©



NOTES

1. SKIS CAN BE INTERCHANGED FROM LEFT TO RIGHT WITHOUT MODIFICATION.
 2. REMOVAL OF SHOES FROM SKID TUBE PRIOR TO THE INSTALLATION OF SKIS IS OPTIONAL.
 - © 3. TORQUE TO 30 INCH POUNDS + 5 INCH POUNDS.
 4. THIS INSTALLATION IS APPROVED ON STANDARD AND HIGH SKID GEAR.
 5. WHEN USING GROUND HANDLING WHEELS TO RAISE SKID FOR INSTALLING SKIS IT IS NECESSARY TO LOOSEN THE BOLTS HOLDING THE GROUND RESONANCE BLADE ENOUGH TO ALLOW THE SKI TO SLIDE ON. RE-TORQUE BOLTS WHEN SKI IS IN PLACE.
 6. 2ND STRAP ASSY. MOVED AFT 1" ON SKI SERIAL NO. 49 AND ON THIS ALLOWS SKIS TO BE INSTALLED WITHOUT REMOVING FWD POPOUT FLOAT BRACKET. AFT POPOUT FLOAT BRACKET MAY BE REINSTALLED AFTER REAR STRAP IS IN PLACE.
 7. DRAG BOLTS (ITEM #14) INSTALLED 8 PER SKI STARTING SERIAL #377 TO PROVIDE GRIP ON ICE. (RETRO FIT ON OLDER SKIS PERMITTED)
- © DENOTES REVISION CHANGES

DRAWING NOT TO SCALE

NO.	QTY	CODE IDENT. NO.	PART NUMBER	DESCRIPTION	STOCK SIZE	MATERIAL	MATERIAL SPEC.	UNITS 1000	FINISH	CALC. UNIT	ACT. WT	ZONE
④	16	8		MS21042-4		NUT						
④	15	8		AN960-416		WASHER						
④	14	8		AN4-6A		BOLT						
④	13	2	17564	L2700AS350-5		RUNNER						
④	12	116		SSB6-8		RIVET						
④	11	28		AN365-524 or MS21042-5		NUT						
	10	56		AN960-516		WASHER						
	9	28		AN316-524		CHECK NUT						
	8	28		NAS514-524-24		SCREW						
	7	28	17564	30185		CSK WASHER						
④	6	2	17564	L2700AS350-4		RUNNER						
	5	4	17564	L2700AS350-2		RUNNER						
④	4	4	17564	L2700AS350-3		RUNNER						
	3	10	17564	L2700SA341-6		STRAP ASSY.						
	2	2	17564	L2700SA341-7		STRAP ASSY.						
	1	2	17564	L2700AS350-1		SKI						
⊗	1	17564	L2700AS350	SKI KIT								
C.G. 37.0" FORWARD OF SOCKET FACE @ 29 lbs. EACH SKI												

THIS DOCUMENT OR DRAWING INCLUDES INFORMATION PROPRIETARY TO AIRGLAS, INC. AND IS SUBMITTED FOR EVALUATION ONLY AND SHALL NOT BE USED TO MANUFACTURE OR REPRODUCE WITHOUT PERMISSION OF AIRGLAS, INC.

TYPICAL SKI INSTALLATION - LEFT SKID
INSTALLATION IN ACCORDANCE WITH

S.T.C. SH709AL - AS350B, B1, B2, BA, D & B3
S.T.C. SH730AL - AS355E, F
EASA.IM.R.S. 01355 AS350B3

© © ©

LIST OF MATERIALS		CONTRACT NO.		SPECS. CONTROL NO.	
UNLESS OTHERWISE SPECIFIED DIMENSIONS ARE IN INCHES TOLERANCES ON:					
DECIMALS	ANGLES				
$\pm .25XX + .10 .XXX + .03 .X + 3$	$\pm .03$				
AS355	HEAT TREAT				
AS350	GOV. SPEC.				
NEXT ASSY.	MATERIAL	STEEL	MIL - H - 6875		
USED ON	ALUM.	MIL - H - 6898			
	MAG. CAST	MIL - H - 6857			
APPLICATION					
Drawn by: Gary Landes	Date: 10-23-92	Size: B	Code Ident.No: 17564	L2700-AS350	REV H
Scale: not scaled					Sheet 1 OF 1

Airglas, Inc.
Anchorage, Alaska

SKI INSTALLATION
EUROCOPTER / AEROSPATIALE HELICOPTER
AS350B, B1, B2, B3, BA, D, & AS355E, F