

INITIAL SETUP**PERSONNEL REQUIRED**

- One: 15T Tactical Transport Helicopter Repairer
- One: 15G Aircraft Structural Repairer
- Six: - Assistants

MATERIALS/PARTS

- Abrasive Paper, 80-Grit
- Adaptor Kit, L20500-7
- Adhesive, EA956
- Cheesecloth, CCC-440
- Corrosion Preventative Compound, MIL-C-16173D, Grade 2
- Cotter Pin
- Dry Cleaning Solvent, P-D-680 Type II
- Foam 6 x 6 x 6 inches
- Furane Epoxy Resin Coating
- Lubriplate, 630AA
- Methyl Ethyl Ketone, TT-M-261
- Non-Metallic Scraper, (Locally Made)
- Rag, Clean, DDD-T-541
- Safety wire
- Sealing Compound, MIL-S-81733
- Ski Repair Kit
- Teflon Urethane Coating
- Wood, 1 x 3 x 16 inches

TOOLS

- Aircraft Mechanic's Toolkit
- Drill Bit, 3/4- inch
- Drill Bit, 1 1/64- inch
- Feeler Gage
- Sander or Sanding Block
- Torque Wrench, 100 – 500 ft. lbs., GGG-W-686
- Torque Wrench, 0 – 600 in. lbs., GGG-W-686

INSTALL

NOTE

Install is the same for both sides. Each bracket is labeled left or right.

- a. Remove tow plate fairing (1H-60(M)G-2-2). Retain hardware.
- b. Remove tow plate (1H-60(M)G-2-2).
- c. Remove main landing gear cutter ((1H-60(M)G-2-2).
- d. Install step and spacer using existing bolts (1H-60(M)G-2-2).
- e. Install existing bolts and spacer in place of tow plate (1H-60(M)G-2-2).
- f. Jack aircraft at forward jack points (1H-60(M)G-2-2).
- g. Relocate lower aft brake line clamp forward to base of next chamfer.
- h. Support drag beam for alignment and remove bolt, washers, and nut holding lower end of shock strut to drag beam (Figure 1, page 3).
- i. Loosely install clamp to drag beam using short bolts and washers (Figure 1, page 3).
- j. Position inboard axle adaptor on clamp and drag beam. Install long bolts and washers in aft clamp holes (Figure 1, page 3).
- k. Position spacer between axle adaptor and drag beam and install bolts through axle adaptor, spacer and drag beam strut. Install washer and nut (Figure 1, page 3).
- l. Snug up all bolts
- m. Using feeler gage, measure gap between axle adaptor and drag beam (Figure 2, page 4 Detail B).
MAXIMUM GAP ALLOWED 0.011 INCH.
- n. If gap exceeds maximum allowed, remove bolts, washers, spacer and axle adaptor and shim until proper gap is obtained. Rivet shims to adaptor.
- o. Position inboard axle adaptor on clamp. Install long bolts and washers in axle adaptor and clamp (Figure 1, page 3).
- p. Position spacer between axle adaptor and drag beam. Install bolt, through axle adaptor, spacer, drag beam strut. Install washer and nut (Figure 1, page 3).
- q. TORQUE LONG AND SHORT BOLTS EVENLY ON CLAMP AND AXLE ADAPTOR TO 45-50 INCH-POUNDS.
- r. Safety wire bolts.
- s. Remove bolt, washers and nut from axle adaptor and drag beam.
- t. Bolt shock strut to drag beam as follows: Refer to (Figure 1, page 3).
 - 1) Install countersunk washer on bolt with countersunk side toward head.
 - 2) Install bolt with head inboard.
 - 3) Install plain steel washer on bolt.
 - 4) Install thick aluminum washer on bolt.
- u. Remove the foam in main gear axles to a depth of 5.2" (inside of axle must be clean). Install outboard axle adaptor shaft, making sure to align the cotter pin hole. Torque the attaching bolt to 45-50 in.-lbs. (Figure 1, page 3)

A

OLT, NAS6216-54D
(TORQUE) 110-
20 FT-LBS

BOLT, NAS146DH46
(TORQUE 385-425 IN.LBS)

WASHER

BOLT, NAS146DH39
(TORQUE 385-
425 IN.LBS)

SPACER
L20500-7-1-3

LOWER SHOCK
STRUT

PLAIN STEEL
WASHER

EXISTING SIKORSKY
HARDWARE

AXLE
ASSEMBLY

COTTER PIN
MS24665-377

WASHER,
MS2002C6

INBOARD AXLE
ADAPTOR
L20500-7-2-1

NUT (TORQUE
110-220 FT.LBS)

THIN ALUMINUM
WASHER

WASHER,
MS2002C6

CLAMP HALF
L20500-7-1-2-2

DRAG BEAM

CLAMP HALF
L20500-7-1-2-1

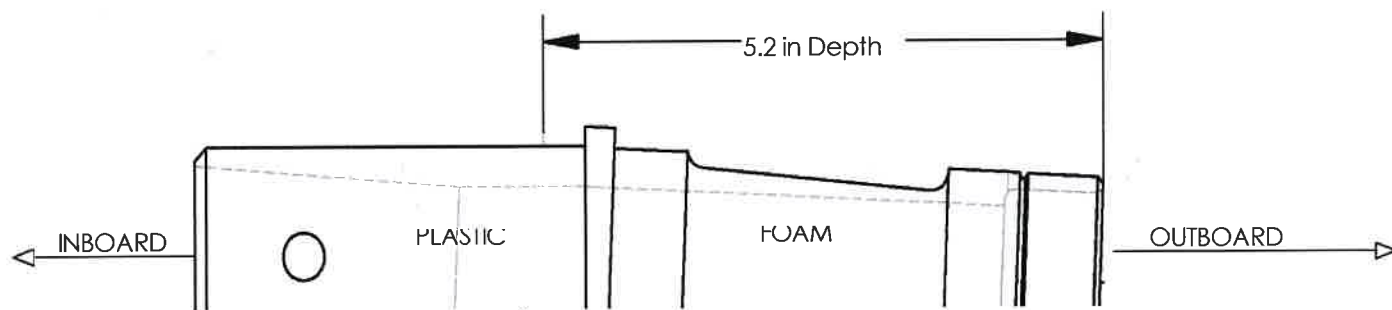
OUTBOARD AXLE
EXPANDER PLUG
L20500-7-3-2

OUTBOARD AXLE
ADAPTOR SHAFT
L20500-7-3-1

BOLT, NAS146-62SPL or
MS20006SPL
(TORQUE 45-50 IN.LBS)

A

B



1.1 MAIN LANDING GEAR ADAPTOR KIT - SHIM INSTALLATION 1.1

B

RIVET

MAIN LANDING GEAR SKI - INSTALL

Installation of both skis (fixed and hinged) is the same except where noted.

- a. Remove paint in and around pivot pin on drag beam and drag beam support (Figure 3, page 6, Detail A).

- b. Lubricate mounting pin on upper mounting bracket using Lubriplate, 630AA.
- c. Install upper mounting bracket into pivot pinhole.
- d. Using bolt, install retaining clamp to upper mounting bracket (Figure 3, page 6, Detail A).

CAUTION

Damage to retaining clamp and cap screw will occur if cap screw is over-tightened. Use care when tightening cap screws.

- e. Adjust the clearance between the mounting bracket and the lower aft edge of the sponson. Tighten cap screw until mounting is snug against sponson (Figure 3, page 6 Detail A). **TORQUE JAMNUT TO 75 – 85 INCH-POUND.**
- f. Install spring cylinder to upper mounting bracket with eyebolt, washers, special washers, and nut. Ensure bolt head is on inboard side (Figure 3, page 6, Detail A). **TORQUE NUT TO 100-140 INCH POUNDS.** Install cotter pin.
- g. Install inboard safety cable to eyebolt with clevis pin and cotter pin. (Figure 3, page 6, Detail A).
- h. Temporarily secure spring cylinder to sponson with safety tab holding main ski tail wheel assembly to ski and remove tail wheel assembly (Figure 4, page 7, Detail D).
- i. Remove bolts, washers, nuts and rear safety tab holding main ski tail wheel assembly to ski and remove tail wheel assembly. (Figure 4, page 7, Detail D).
- j. Place a 1 x 3 x 16 inch piece of wood under rear edge of wheel well.

CAUTION

To avoid damage to ski take extreme care to ensure that the wheels are on the outboard part of the wheel wells.

- k. Tow helicopter, (1H-6-(M)G-2-1), or push helicopter forward with help of assistants until main wheels are centered in ski wheel well.

1.2 HINGED SKI MAIN LANDING GEAR - INSTALL/ REMOVE 1.2

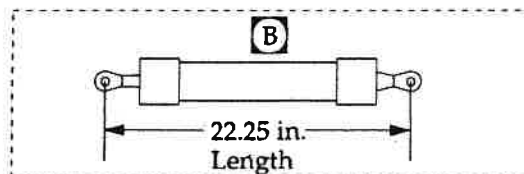
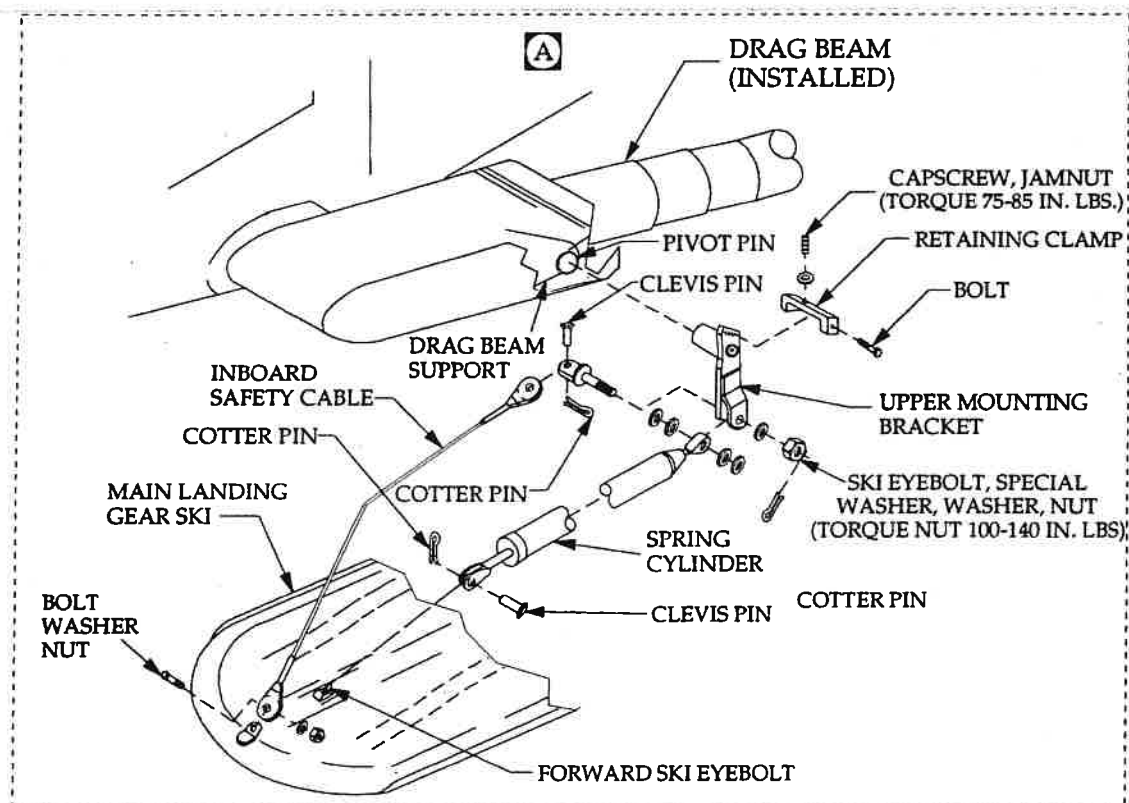
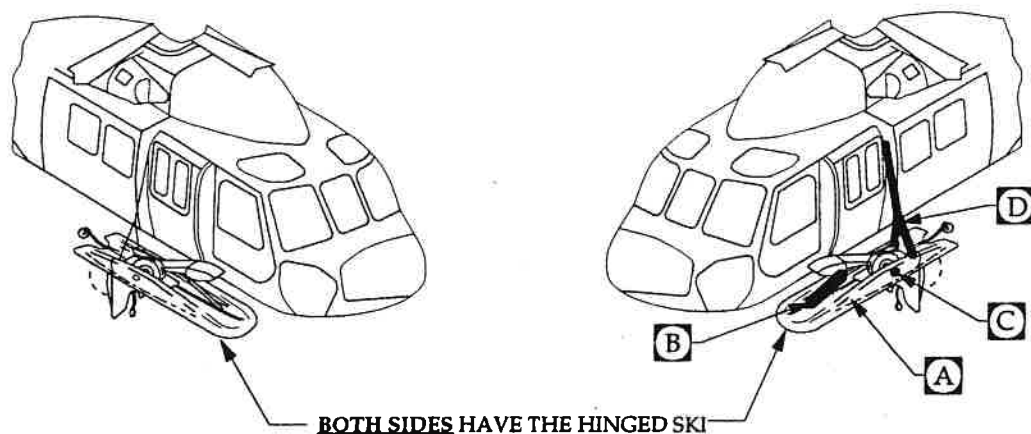
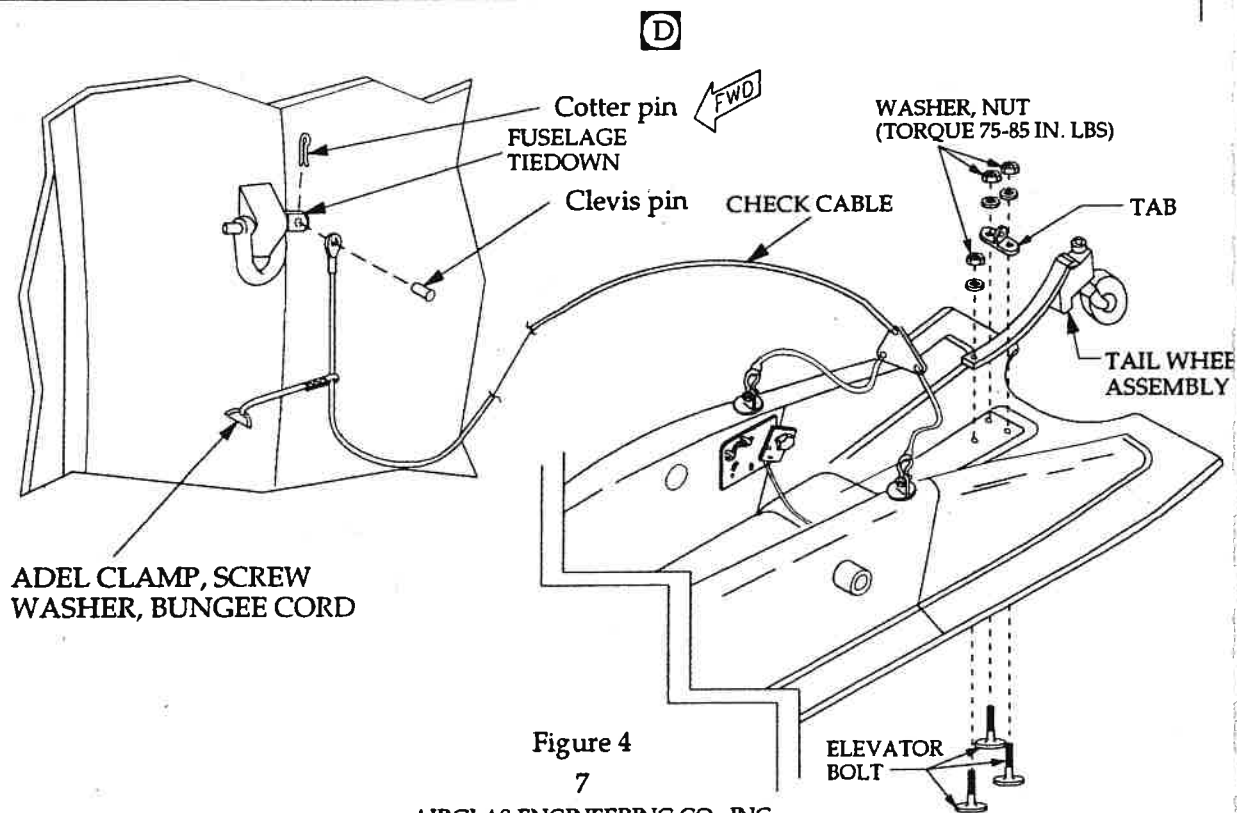
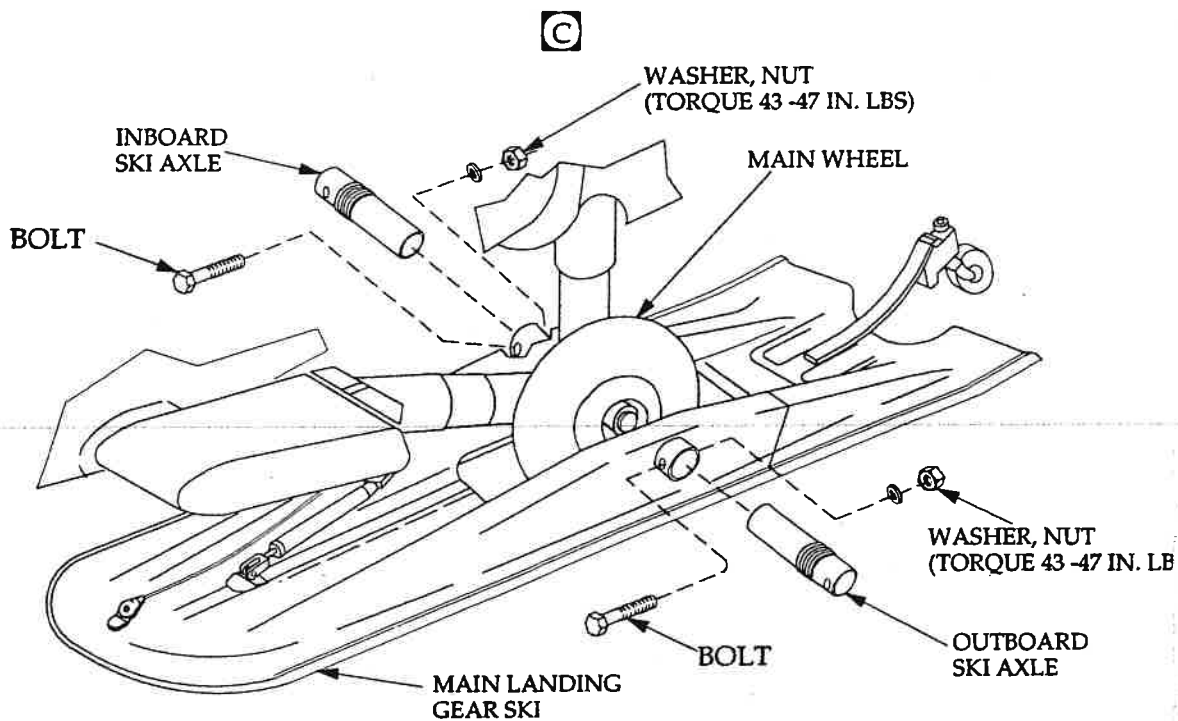


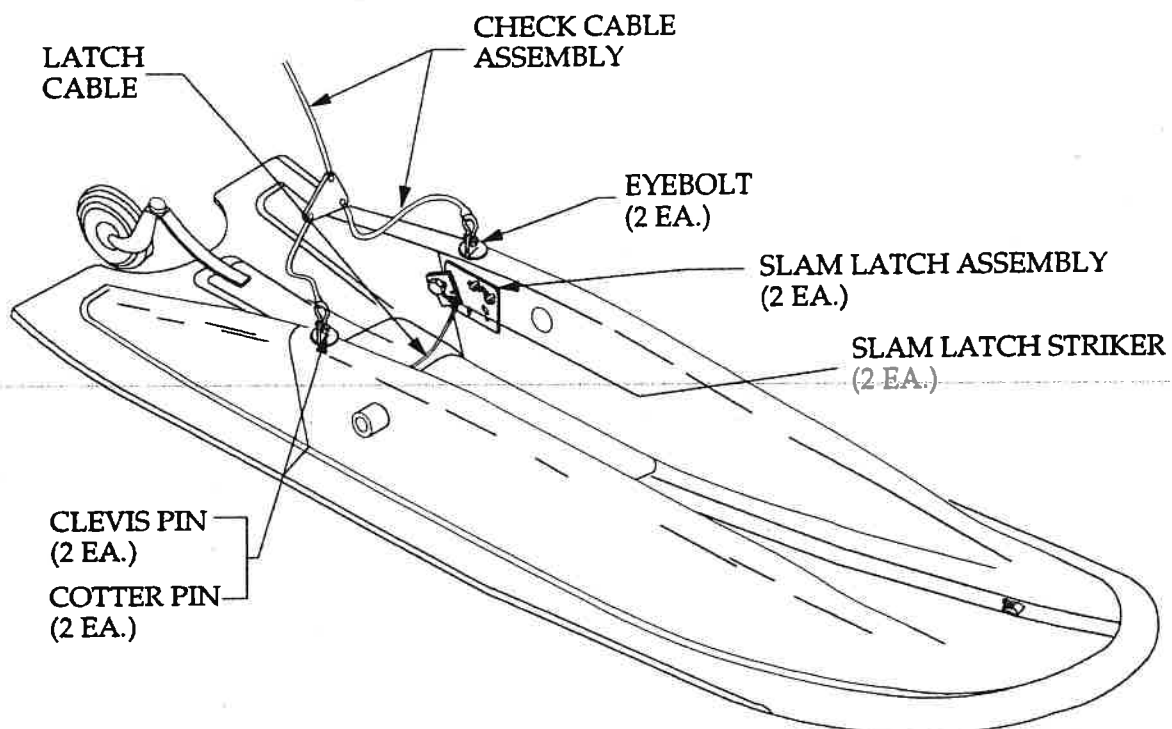
FIGURE 3

1.2 HINGED SKI, MAIN LANDING GEAR SKI - INSTALL/ REMOVE 1.2



AIRGLAS ENGINEERING CO., INC.
ANCHORAGE, AK 99519

E



F

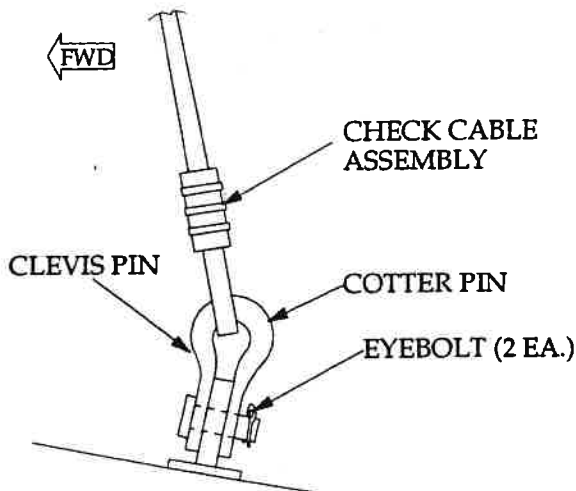


Figure 5

FIGURE 5

1. Remove wood.

- m. Install tail wheel assembly and rear safety cable to ski using bolts, washers, table and nuts. Ensure bolts are flush with bottom of ski (Figure 4, page 7, Detail B). TORQUE NUTS TO 75 – 85 INCH-POUNTS
- n. Lubricate ski axle with thin coat of Lubriplate, 630AA.

NOTE

Do not extend spring cylinder beyond its present length of 22-¼ inches.

- o. Install spring cylinder on forward ski eyebolt with clevis pin and cotter pin (Figure 3, page 6, Detail A) and upper mounting bracket.
- p. Attach ratchet-type cargo strap to aft edge of ski and wrap around oleo. Tighten strap until ski axles align with axle adapter.
- q. Insert outboard ski axle into ski and thread ski axle into axle adapter (Figure 4, page 7, Detail B).
- r. Thread inboard and outboard ski axles until both are evenly seated on axle adapter.
- s. Back off inboard and outboard ski axles until bolt holes line up.
- t. Install bolts through inboard and outboard axles and ski (Figures 4, page 7, Details B). Install washers and nuts on bolts. TORQUE NUTS TO 43 – 47 INCH-POUND.
- u. Install rear check cable to fuselage tie down fitting eyebolt using clevis pin and cotter pin. (Figure 5, Page 8, Detail D).

NOTE

Longer screw may be required to install Adel clamp.

- v. Remove center screw and washer from ESSS access door on support fairing at STA 303.4. Install Adel clamp and bungee cord on safety cable to access door using screw and washer (Figure 5, page 8, Detail D).
- w. Install inboard safety cable to ski bolt, washer and nut (Figure 3, page 6, Detail A).

REMOVE

- x. Remove bolt, washer and nut holding inboard safety cable to ski (Figure 3, page 6, Detail A).
- y. Remove clevis pin and cotter pin holding inboard safety cable to ski eyebolt (Figure 3, Page 6, Detail A).
- aa. Remove inboard safety cable.
- bb. While lifting forward edge to ski to relieve tension on the spring cylinder, remove eyebolt, washers, special washers and nut holding spring cylinder to upper mounting bracket (Figure 3, page 6, Detail A).
- cc. Remove clevis pin and cotter pin holding spring cylinder to ski (Figure 3, page 6, Detail A).
- dd. Remove spring cylinder.
- ee. Remove screw and washer holding Adel clamp to ESSS fairing and remove clamp and bungee cord (Figure 5, page 8, Detail D). Reinstall screw and washer.
- ff. Remove clevis pin and cotter pin holding rear safety cable to fuselage tie down fitting and remove cable (Figure 5, page 8, Detail D).

1.2

MAIN LANDING GEAR SKI – INSTALL/REMOVE

1.2

- gg. Place a 6-inch foam pad 12 inches from front of ski.
- hh. Remove bolts, washers and nuts from ski axles (Figure 4, page 7, Detail B).
- ii. Unscrew and remove ski axles from axle adapters.
- jj. Remove bolts, washers, nuts, and tab on rear safety cable from tail wheel assembly (Figure 5, page 8, Detail D).
- kk. Remove tail wheel assembly and rear safety cable.
- ll. Remove foam pad from under ski
- mm. Place a 1x3x16 inch wood block under read edge of wheel well.

CAUTION

- nn. Tow helicopter (1H-60(M)G-2-1 or push helicopter rearward until the wheel has cleared rear of ski.
- oo. Reinstall tail wheel assembly on ski using bolts, washers and nuts (Figure 4, page 7, Detail B).

NOTE

REMOVAL

Remove of the upper mounting bracket is optional

- pp. Loosen jamnut on cap screw (Figure 3, page 6, Detail A).
- qq. Loosen cap screw on remaining clamp. Remove bolt holding retaining clamp to upper mounting bracket (Figure 3, page 6, Detail A).
- rr. Remove retaining clamp.
- ss. Remove upper mounting bracket from pivot pin (Figure 3, page 6, Detail A).
- tt. Remove Lubriplate from pivot pin with cheesecloth moistened with dry-cleaning solvent, P-D 680, Type II.
- uu. Touch up paint as required (1H-60(M)G-2-2).

1.3

TAIL LANDING GEAR SKI – INSTALL/REMOVE

1.3

- a. Remove jack pad from tail wheel yoke (1H-60(M)G-2-3).
- b. Install attachment fitting on spring cylinder into jack pad mounting hole using existing and washer (Figure 6, page 13, Detail A). TORQUE BOLT TO 105 – 115 INCH-POUNDS.
- c. Remove bolts, washers and nuts holding ski tail wheel to ski (Figure 7, page 14, Detail C).
- d. Remove tail wheel assembly.
- e. Have assistant hold ski so rear portion is centered in from of tail wheel.
- f. Slowly tow (1H-60(M)G-2-1) or push helicopter forward until tail wheel is centered in wheel well of ski.
- g. Remove tow bar, if installed (1H-60-(M)G-2-1).
- h. Lubricate ski axles with Lubriplate, 630AA.
- i. Lift ski until it aligns with tail wheel axle.
- j. Install ski axle adaptors through attach brackets (Figure 7, page 14, Detail B).
- k. Install bolt through attach bracket and axle adaptor and install nut (Figure 7, page 14, Detail B). TORQUE NUT TO 43 – 47 INCH-POUNDS.
- l. Install tail wheel assembly to ski using bolts, washers and nuts (Figure 7, page 14, Detail C). TORQUE NUT TO 75 – 85 INCH POUNDS.
- m. Safety wire bolt
- n. Attach safety cable to eyebolt securing spring cylinder to attach fitting using clevis pin and cotter pin (Figure 6, page 13, Detail A).

REMOVE

- a. Remove clevis pin and cotter pin attaching safety cable to eyebolt securing spring cylinder to attachment fitting (Figure 6, page 13, Detail A).
- b. Remove safety cable.
- c. Remove bolt and washer holding spring cylinder attachment fitting to jack pad mounting (Figure 6, page 13, Detail A).
- d. Remove spring cylinder.
- e. Remove bolts, washers and nuts holding ski axles (Figure 7, page 14, Detail B).
- f. Remove tail wheel.
- g. Remove bolts, washers nut holding ski axles (Figure 7, page 15, Detail B).
- h. Remove ski axles form tail wheel axle.
- i. Hold ski so that rear portion is parallel to ground behind tail wheel.
- j. Tow (1H-60(M)-G-2-3) or push helicopter rearward until tail wheel clears ski.
- k. Install jack pad (1H-7-(M)G-2-3).
- l. Install tail wheel assembly using bolts washers and nuts (Figure 7, page 14, Detail C).
- m. Remove tow bar, if installed (1H-60(M)G-2-1).

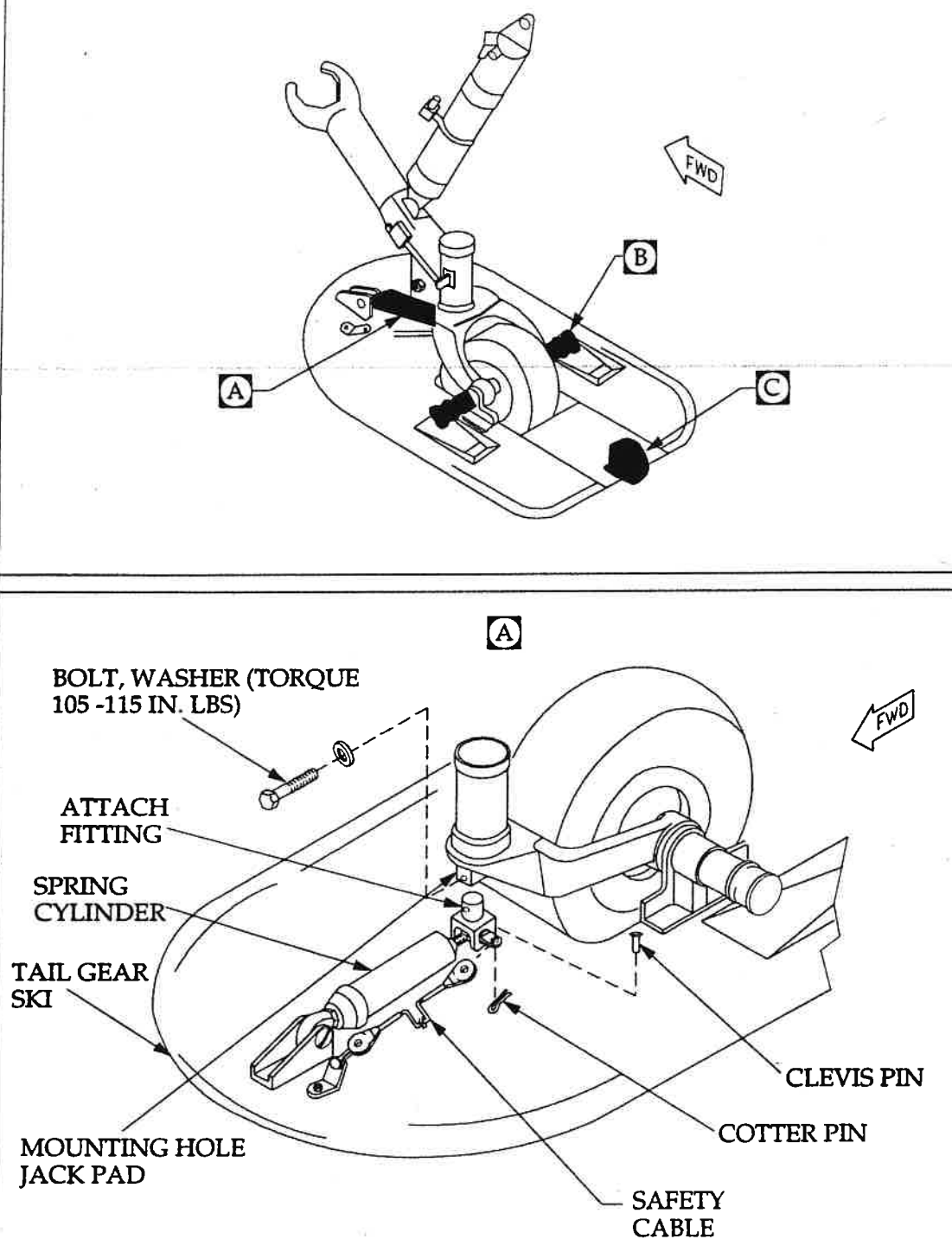
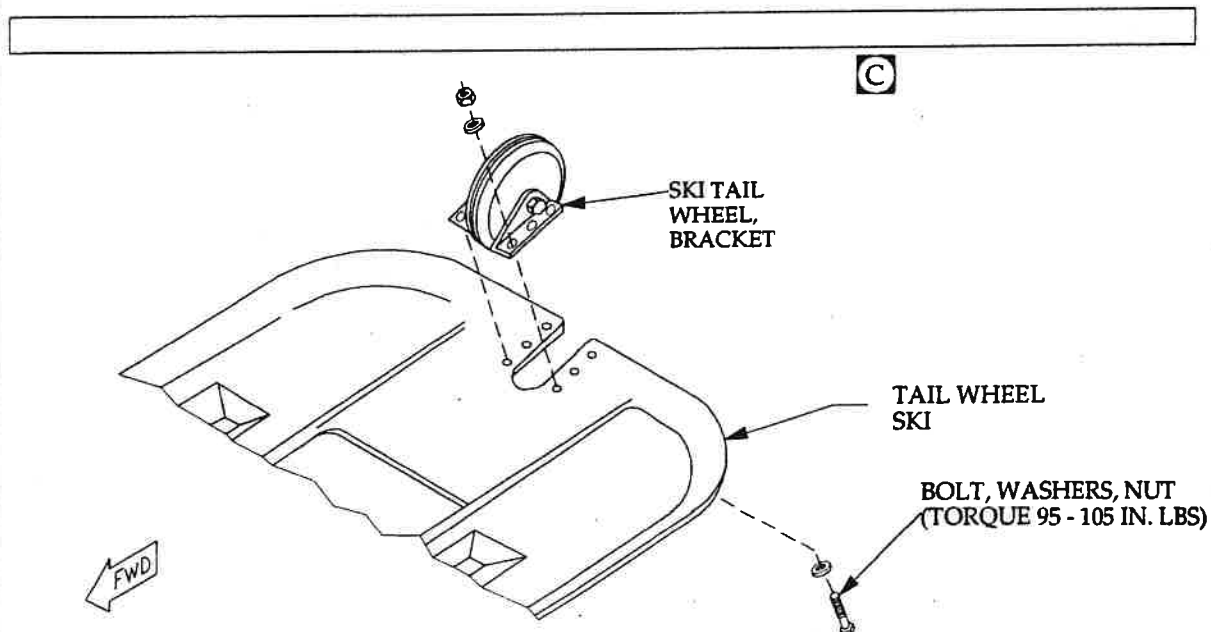
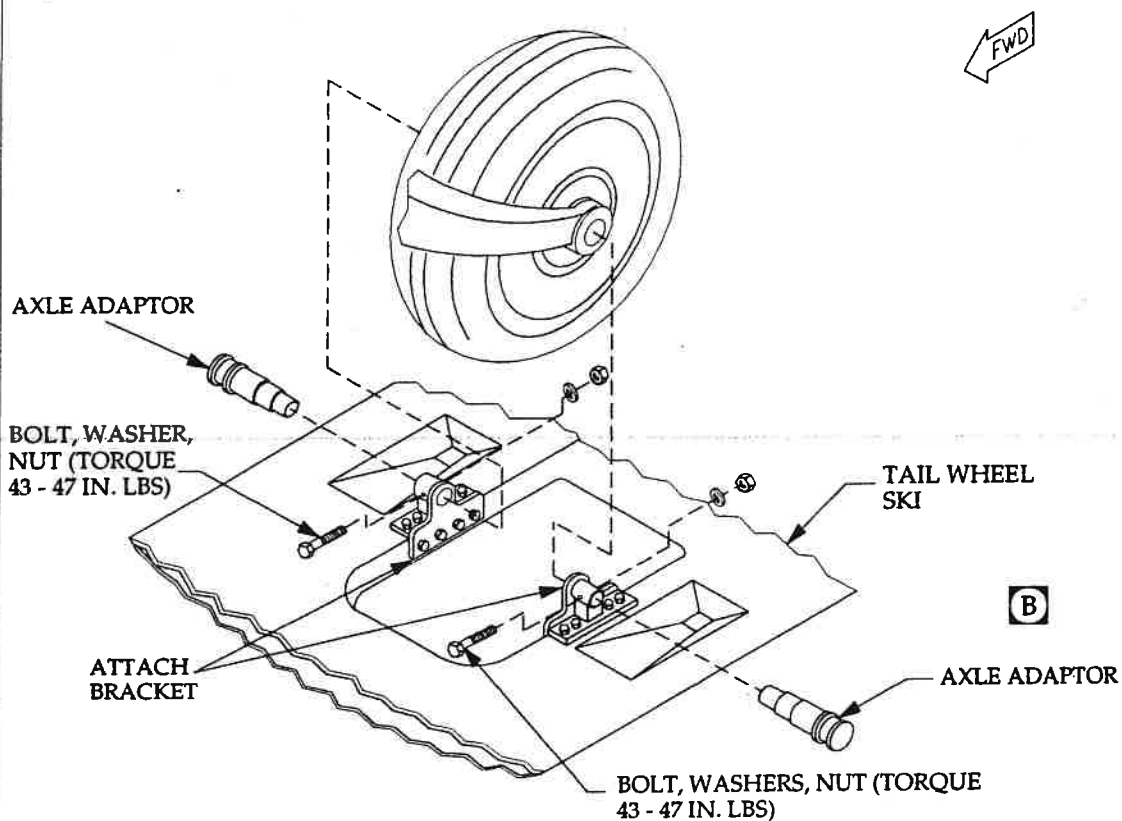


FIGURE 6



NEGLIGIBLE DAMAGE

- a. Small nicks, scratches or abraded area on bottom of ski.

REPAIRABLE DAMAGE

- b. Cracks or fractures except in area of ski bushing or spring cylinder attach points.
- c. Delaminations except in area of ski bushing and spring cylinder attach points.
- d. Small holes 2 inches in diameter or less.
- e. Abrasion on bottom of ski due to contact with rocks or other obstacles.
- f. Bottom coating worn through to glass fibers.
- g. Demolished section less than 30 percent of front or rear 1/3 of ski. Consult manufacturer for repair.
- h. Major bottom damage, consult manufacturer for repair.

NON-REPAIRABLE DAMAGE

- i. Major damage in area of ski bushings.
- j. Damage to 30 percent or more of ski top including cracks, fractures, delaminations or demolished section, or any combination of each.

INSPECT

- k. Inspect bottom surface of ski for cracks. If damaged, consult manufacturers.
- l. Inspect bottom surface for scratches or excessive wear.

REPAIR

- m. Using sander and abrasive paper, sand surface of ski until smooth. Wipe clean using a clean rag.

WARNING

Epoxy resin is flammable and toxic. Good general ventilation is normally adequate. Skin and eye protection is required. Avoid all sources of ignition.

- n. Apply furane epoxy resin coating to surface of ski per instructions in ski repair kit. Allow to dry at room temperature for 24 hours.
- o. Using sander or sanding block and abrasive paper, roughen epoxy resin coating. Wipe clean using a clean rag.

WARNING

Urethane coating is flammable and toxic. Good general ventilation is normally adequate. Skin and eye protection is required. Avoid all sources of ignition.

- p. Apply Teflon urethane coating to ski surface per instructions in ski repair kit. Allow to dry for 48 hours.

1.5

HINGED SKI – REPAIR & TORQUE VALUES

1.5

INSPECTION COMPONENTS

- a. Inspect slam latch assembly for damage, security and by checking the release function of the slam latch (Figure 8, page 19). No cracks or distortion are allowed. If slam latch assembly does not firmly lock and realignment or lubrication with corrosion preventative compound MIL-C-16173D, Grade 2 does not correct the problem, replace slam latch assembly.
- b. Inspect latch cable and stop cable assembly for broken strands. If MORE THAN THREEED strands are broken, replace cable(s).
- c. Visually inspect slam latch striker for cracks and distortion. Replace slam latch striker if any are found.
- d. Inspect check cable assembly for broken strands. NONE ARE ALLOWED. Replace as necessary.
- e. Visually inspect hinge assembly for cracks. NONE ARE ALLOWED. Replace hinge assembly as required. Visually inspect the attaching screws for damage and replace as necessary.
- f. Visually inspect the stop cable assembly attachment bolts for security and correct TORQUE OF 105 – 115 POUNDS.

REMOVE SLAM LATCH ASSEMBLY/SLAM LATCH MOUNTING PLATE.

NOTE

Remove and replacement of LH or RH slam latch assembly/slam latch mounting plate are the same.

Loosening of both jam nuts may cause misalignment of slam latch assembly.

- g. Loosen forward jamnut only (Figure 9, page 20, Detail A).

- h. Loosen forward setscrew 1 or 2 turns.
- i. Remove three screws, three washers, and one spacer securing slam latch mounting plate to ski.
- j. Pull applicable end of latch cable to disengage the slam latch from its latch striker (Figure 10, page 21, Detail B).
- k. Remove slam latch assembly/slam latch mounting plate, and shim from ski.
- l. To replace slam latch assembly, which is attached to the slam latch mounting plate, proceed as follows:
 - (1) Remove latch cable by removing cotter pin and clevis pin.
 - (2) Remove three screws, washers, and fiber locknuts and remove slam latch assembly and slam latch release plate from slam latch mounting plate (Figure 10, page 21, Detail B).

INSTALL SLAM LATCH ASSEMBLY/SLAM LATCH MOUNTING PLATE.

CAUTION

Over torquing of hardware can cause unrepairable damage to the slam latch assembly.

- m. To install slam latch assembly to the slam latch mounting plate proceed as follows:

- (1) Position replacement slam latch assembly and slam latch release plate
- (2) Reconnect latch cable with clevis pin and cotter pin.

1.5

HINGED SKI – REPAIR & TORQUE VALUES

1.5

- n. Position shim and slam latch assembly/slam latch mounting plate on ski. Install lower forward bolt (5/16 inch shorter) and washer (Figure 9, page 20, Detail A). **DO NOT TIGHTEN AT THIS TIME.**
- o. Install aft upper bolt (5/16 inch longer) and washer. **DO NOT TIGHTEN AT THIS TIME.**
- p. Install forward upper bolt (3/8 inch), washer and spacer. Tighten bolt snug up to mounting plate, but not so tight as to prevent alignment movement during setscrew tightening.

NOTE

When reinstalling slam latch assembly/slam latch mounting plate which have only had the forward setscrew loosened, the following step is not required.

- q. Place 0.020 inch shim/gauge between forward ski half rubber bumper and aft ski half (Figure 10, page 21, Detail B). Position slam latch assembly/slam latch mounting plate to allow easy removal/insertion of the shim.
- r. Tighten forward setscrew very snug against spacer and then tighten ¼ turn more.
- s. Tighten forward jamnut very snug and then tighten ¼ inch more.

CAUTION

Over torquing can cause unrepairable damage to the ski.

- t. TORQUE FORWARD UPPER SETSCREW BOLT TO 140 – 160 INCH POUNDS.
- u. TORQUE OTHER TWO ATTACHING BOLTS TO 140 – 160 INCH POUNDS.
- v. Apply weight to forward edge of ski to allow slam latched to release slam latch strikers.
- (1) Check for proper functioning of the slam latches by pulling the latch cable and checking for simultaneous unlatching of BOTH slam latches.
- (2) Readjust setscrews, as necessary, to obtain simultaneous unlatching.
- w. Lubricate both slam latches with corrosion preventive compound, MIL-16173D, Grade 2.

REMOVE/INSTALL STOP CABLE

- x. Remove two bolts, four washers, one spacer, and stop cable assembly ends from the ski halves (Figure

CAUTION

Over torquing of hardware can cause unrepairable damage to the ski.

- y. Position stop cable assembly and install two bolts, four washers and a spacer (forward ski half only). **TORQUE BOLTS TO 105-115 INCH POUNDS.**

REMOVE/INSTALL SLAM LATCH STRIKER

NOTE

Removal and installation procedures for LH or RH slam latch striker are the same.

- z. Apply adequate weight to forward edge of ski to allow the aft ski half to drop far enough to gain access to the slam latch striker.

- aa. Pull latch cable to free slam latch from slam latch striker (Figure 9, page 20, Detail A).
- bb. Slowly remove slam latch striker from ski (Figure 9, page 20, Detail A).

CAUTION

Over torquing of the latch striker can cause unrepairable damage to the ski.

- cc. Install slam latch striker and **TORQUE TO 190-210 INCH POUNDS.**
- dd. Remove weight and secure ski.

REMOVE/INSTALL HINGE ASSEMBLY

NOTE

Removal and installation procedures for LH or RH hinge assembly are the same.

- ee. Remove ski from aircraft.
- ff. Remove twelve screws from inboard side of ski and six screws, washers, and nuts from outboard side of ski. Remove hinge assembly from ski (Figure 11, page 22, Detail D).
- gg. Position new hinge assembly.

CAUTION

Over torquing of the screws can cause Unrepairable damage to the ski.

- hh. Install hinge assembly, twelve screws on inboard side of ski, and six screws, washers and locknuts on outboard side of ski. **TORQUE SCREWS TO 100-120 INCH POUNDS.**
- ii. Reinstall ski on aircraft.

REMOVE/INSTALL CHECK CABLE EYEBOLT

- jj. Remove cotter pin, clevis pin, and check cable assembly (Figure 11, page 22, Detail E).
- kk. Carefully remove eyebolt from ski.

CAUTION

Over torquing of the eyebolt can cause unrepairable damage to the ski.

- ll. Install eyebolt. Tighten snug and then turn until eyebolt ear is perpendicular to the ski.
- mm. Attach check cable assembly, clevis pin and cotter pin to eyebolt.

INSTALL RUBBER BUMPER

- nn. After removal of old rubber bumper use nonmetallic scrapper, a clean rag, and Methyl Ethyl Ketone, TT-261, and clean recessed area of ski and allow to dry.
- oo. Apply adhesive, EA956, to recessed area.
- pp. Insert rubber bumper. Wipe away excess adhesive and allow to dry.

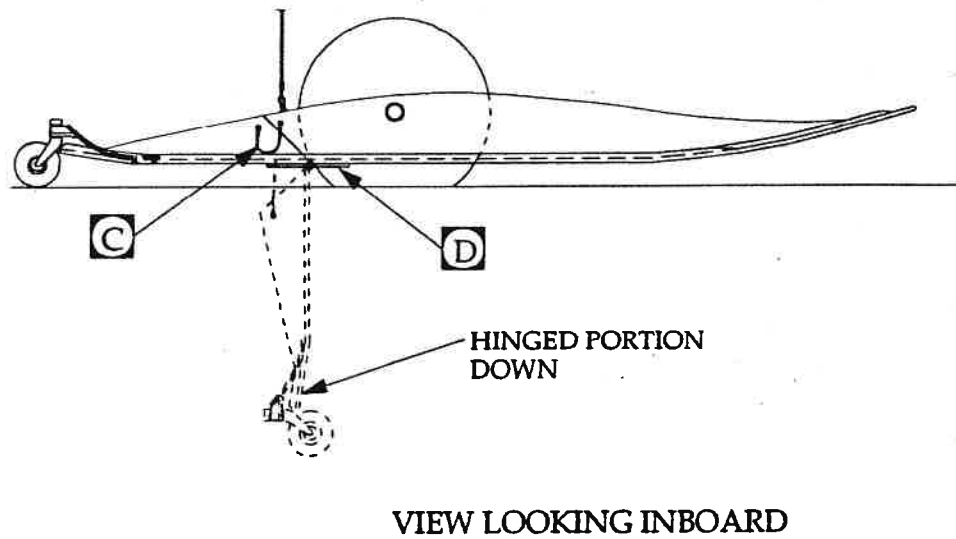
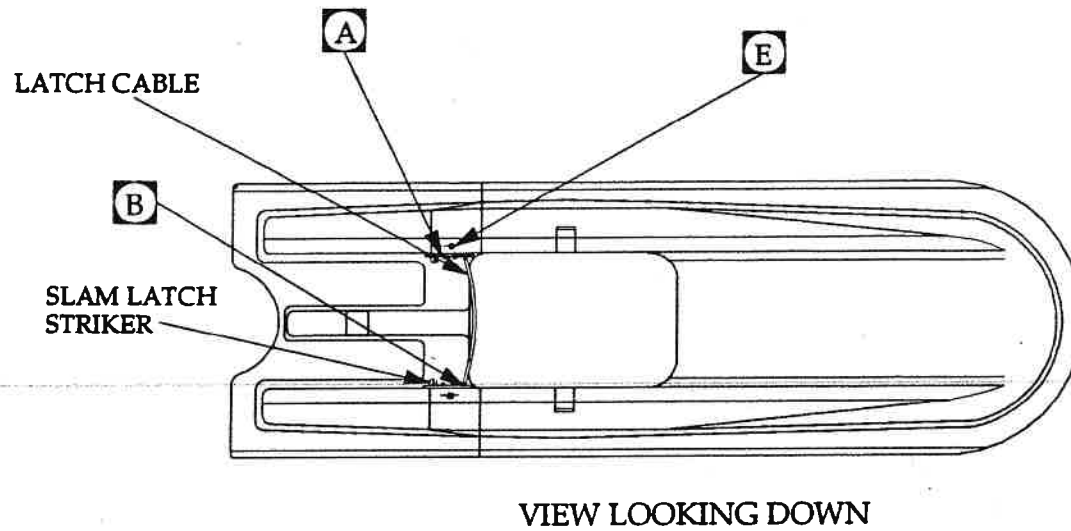


Figure 8

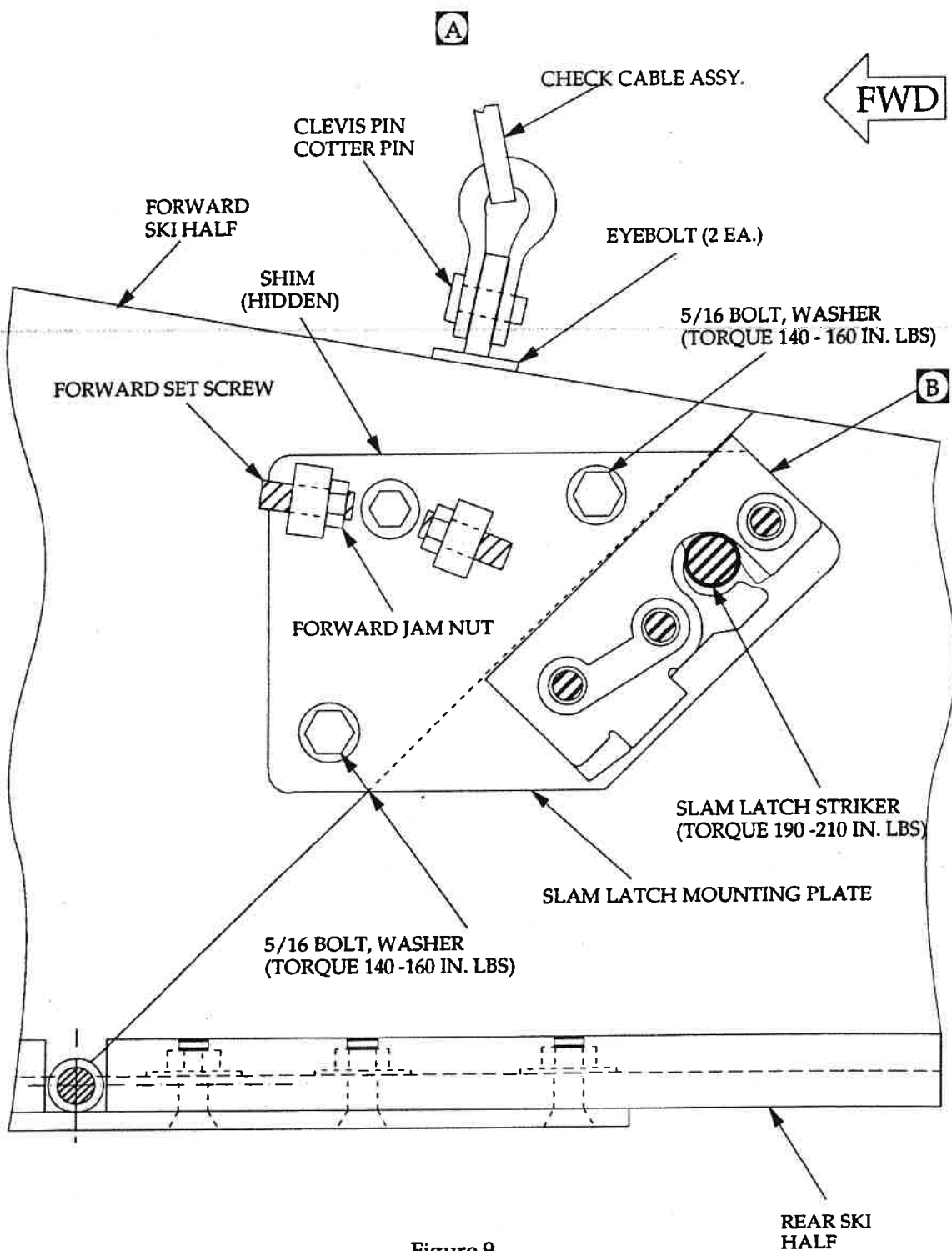


Figure 9

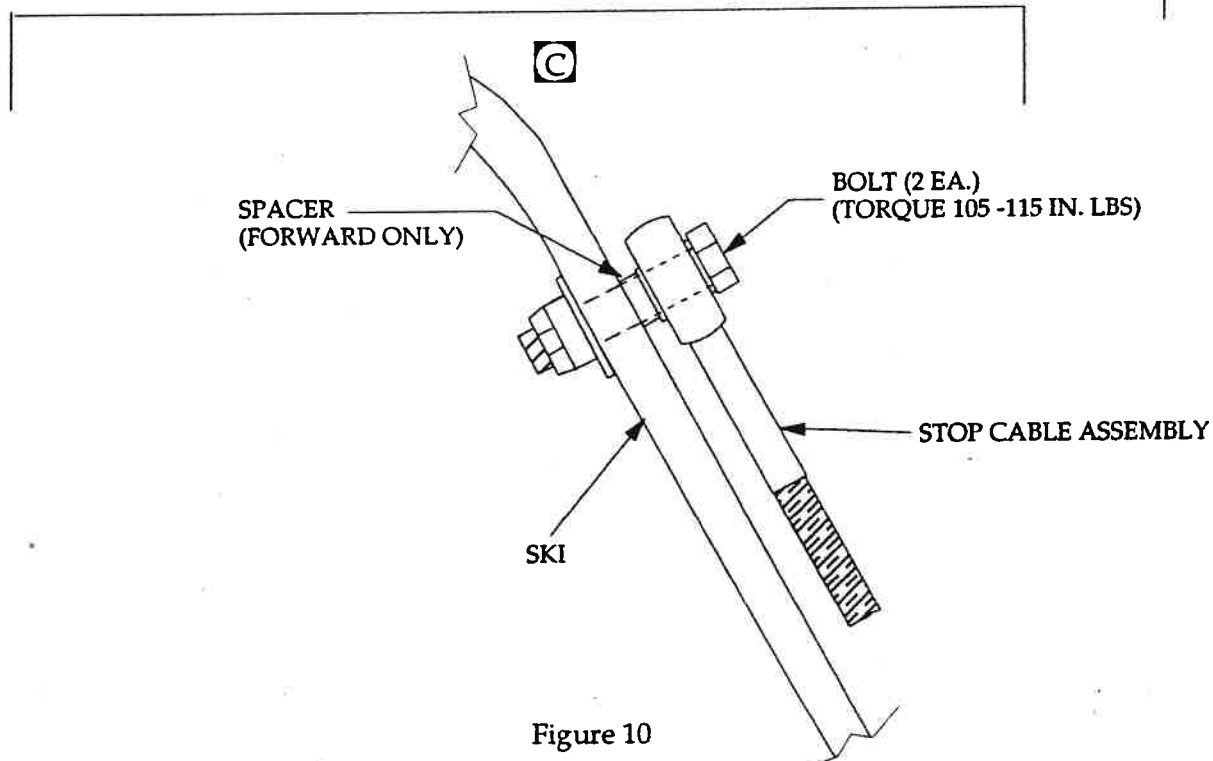
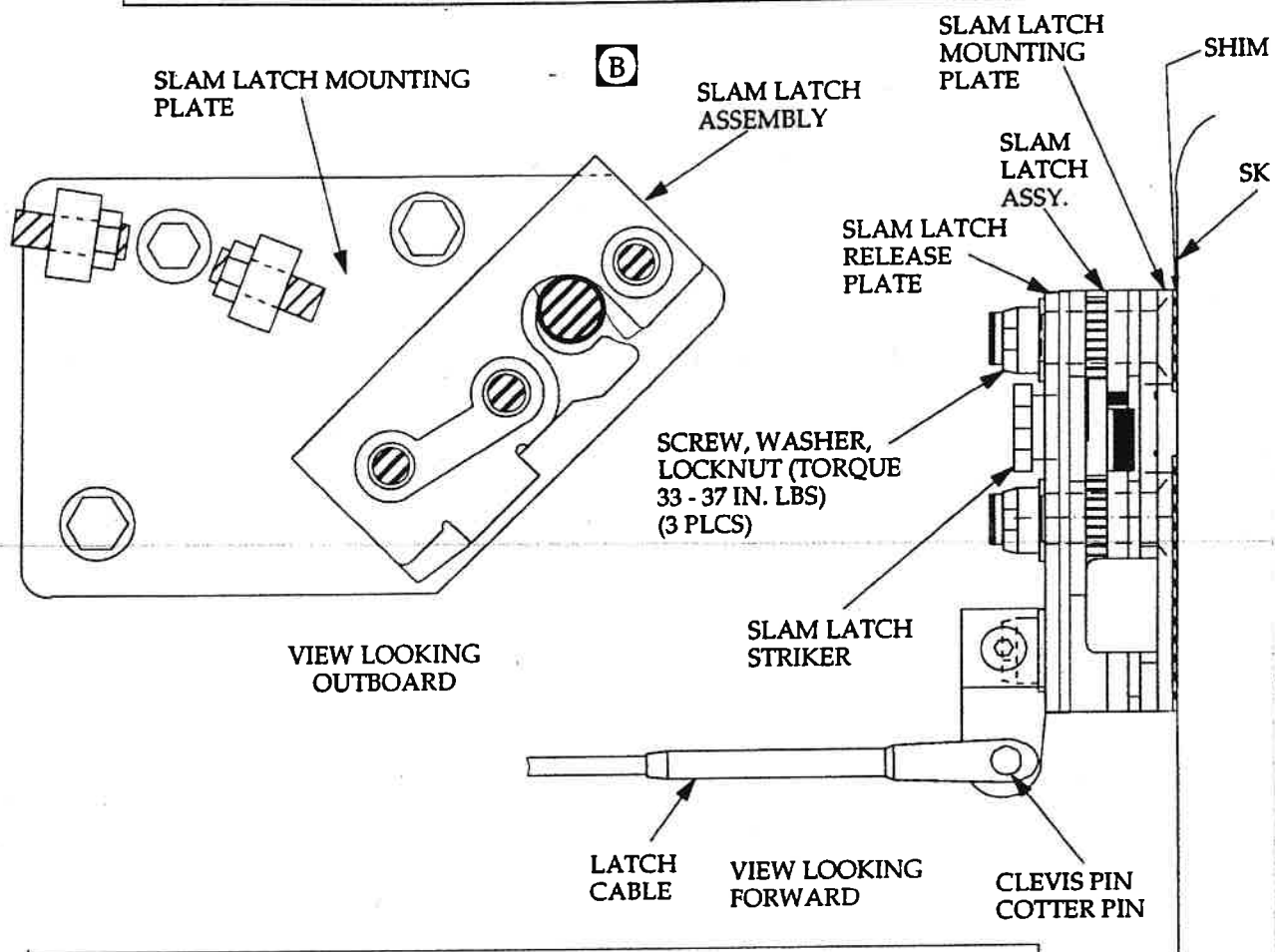
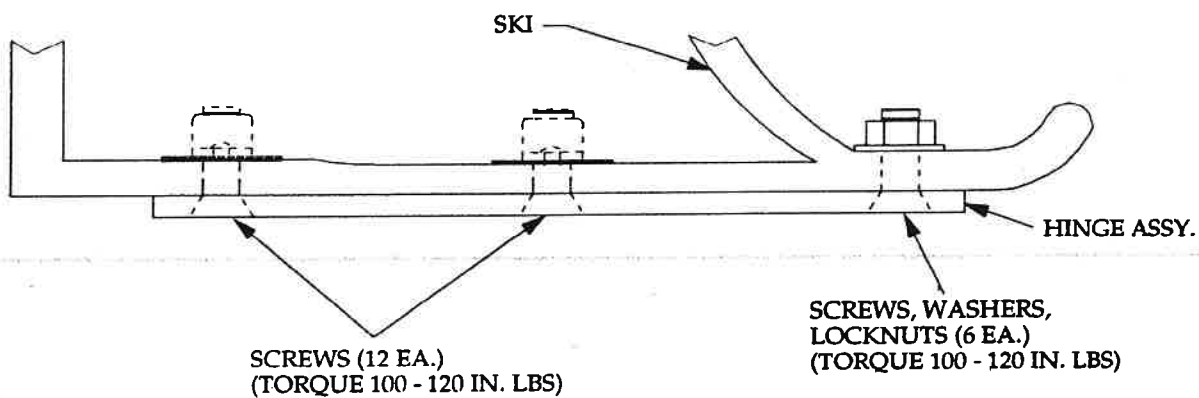


Figure 10

D

VIEW LOOKING FORWARD

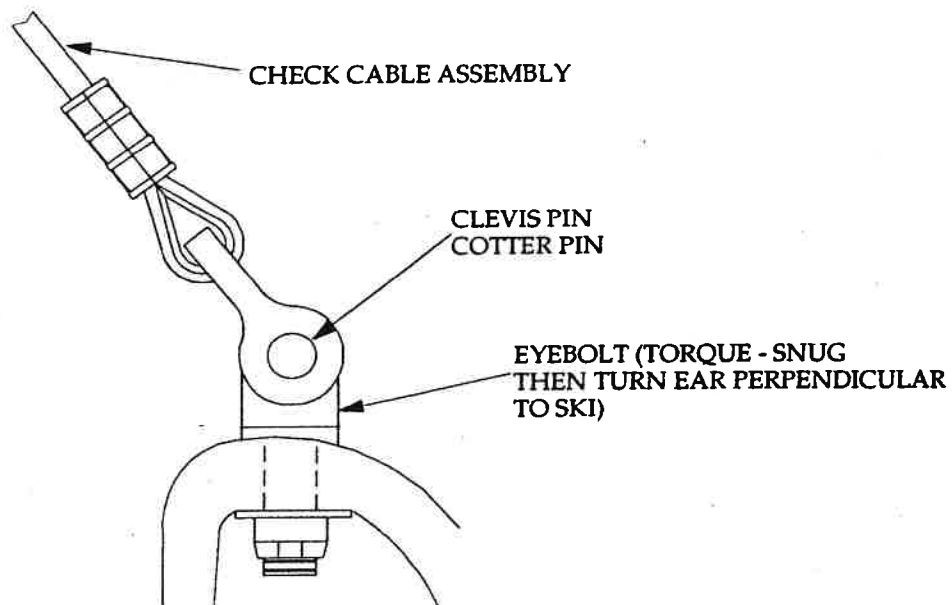
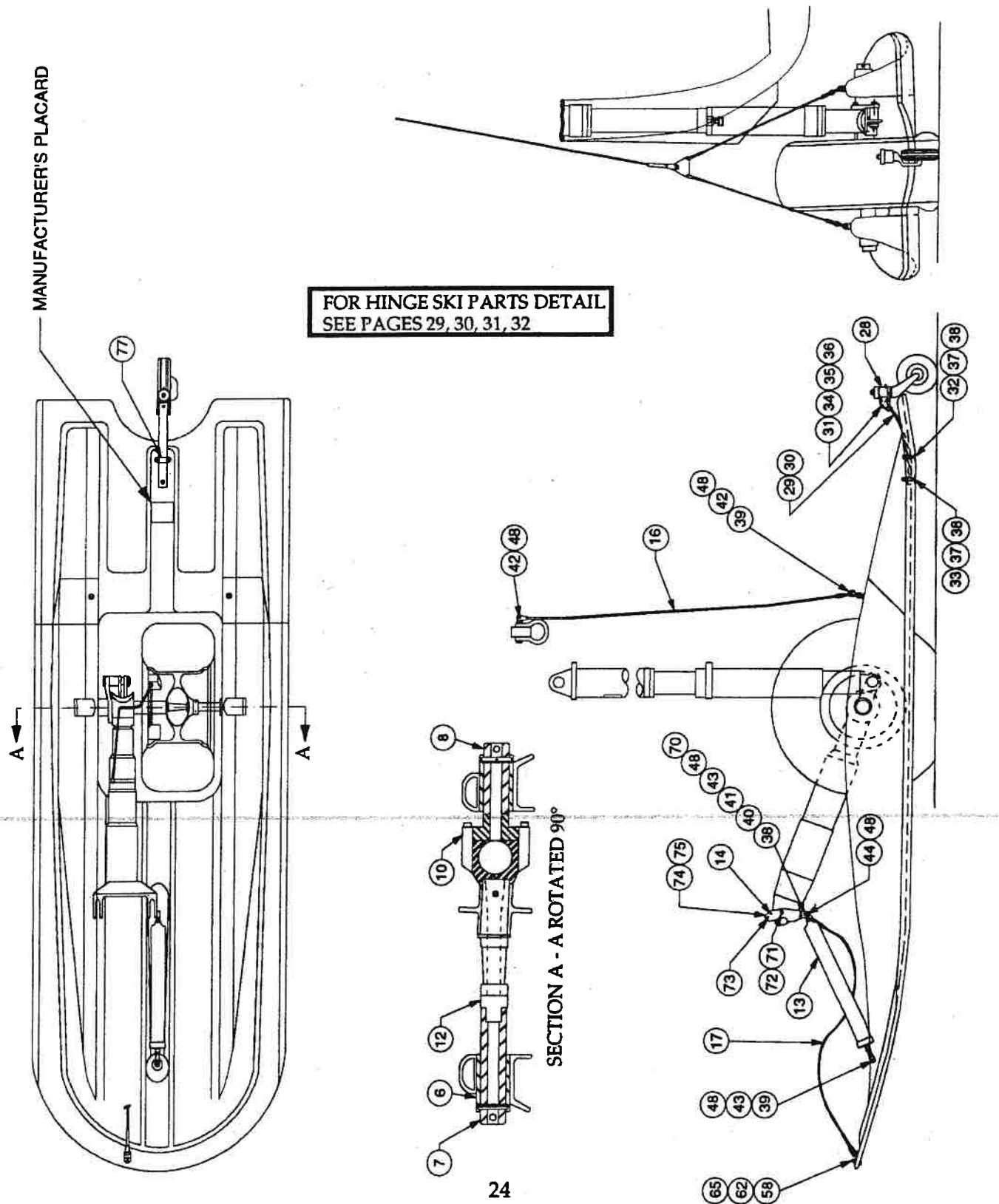
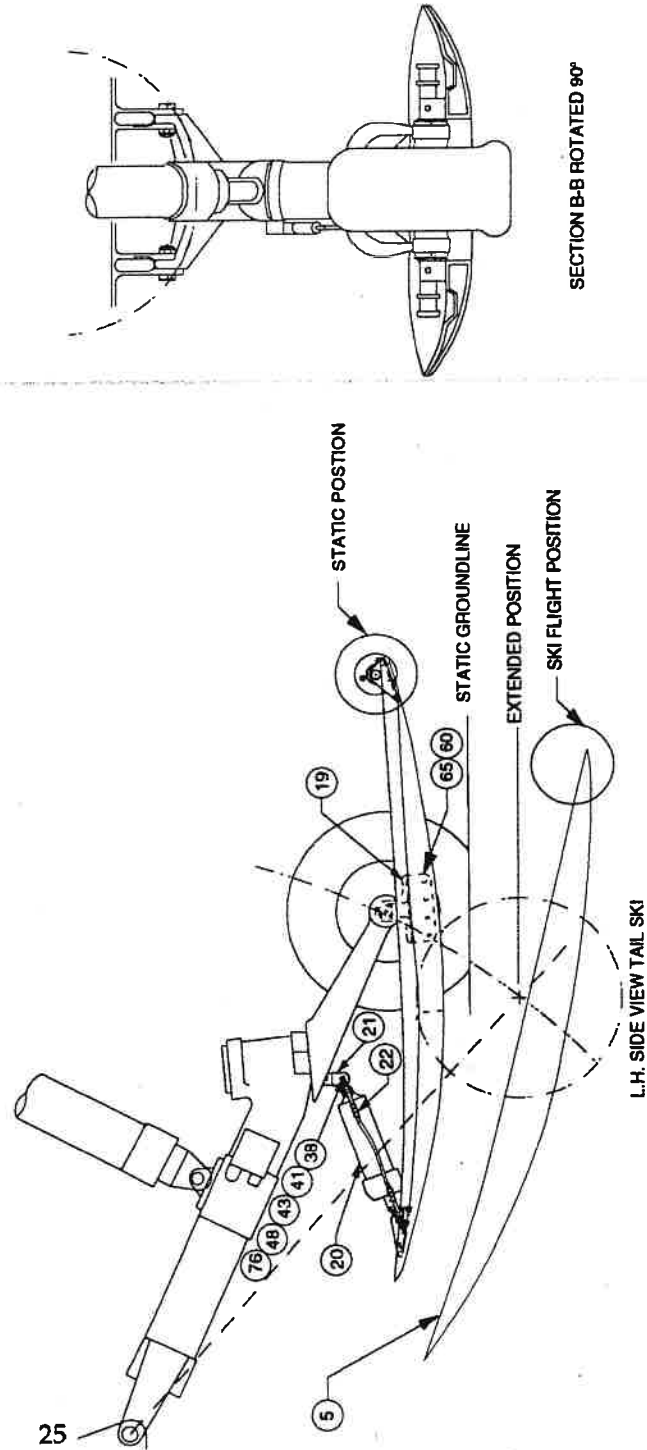
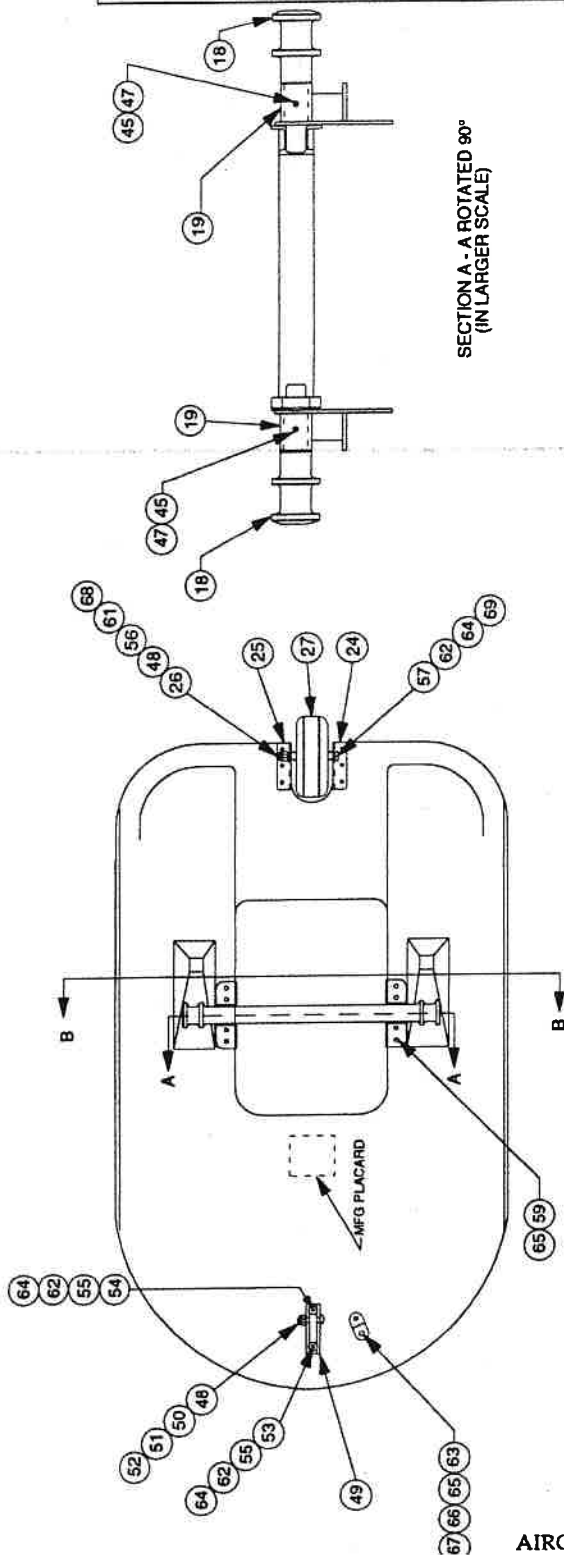
E

Figure 11

1.5.1	Right & Left Main Ski	18
1.5.2	Tail Ski	18
1.5.3	Main Landing Gear Adaptor Kit	20
1.5.4	Spring Cylinder, Main Ski	22
1.5.5	Spring Cylinder, Tail Ski	24
1.5.6	Tail wheel, Main Ski	26





AIRGLAS ENGINEERING CO., INC.

1 6 1	RIGHT & LEFT MAIN SKI	1 5 1
1 6 2	TAIL SKI	1 5 2

PARTS LIST

INDEX NUMBER	PART NUMBER	CODE IDENT. NO.	NOMENCLATURE	NUMBER REQUIRED
1	L20500	17564	Basic Ski Molding	2
2	L20500-1	17564	Main Ski Assy. L.H.	1
3	L20500-2R	17564	Main Ski Assy. R.H.	1
4	L20500-03	17564	Basic Ski Molded (Tail Ski)	1
5	L20500-3	17564	Ski Axle Assy.	1
6	L20500-4	17564	Ski Bushing Molded into L20500-01	4
7	L20500-5	17564	Ski Axle, Outboard	2
8	L20500-6	17564	Ski Axle, Inboard	2
9	L20500-7	17564	Ski Axle Adaptor Kit Main Skis	1
10	L20500-7-1	17564	Inboard Axle Adaptor Assy. Skis	1
11	L20500-7-2	17564	Outboard Axle Adaptor Assy.	1
12	L20500-7-3	17564	Outboard Axle Adaptor Assy.	2
13	L20500-8	17564	Spring Cylinder, Main Ski	2
14	L20500-9	17564	Upper MTG. BKT, Spring Cyl. L.H. Ski	1
15	L20500-10	17564	Upper MTG. BKT., Spring Cyl. R.H. Ski	1
16	L20500-11	17564	Check Cable Assy., Main Ski	2
17	L20500-12	17564	Safety Cable Assy., Main Ski	2
18	L20500-13	17564	Tail Ski Axle Adaptor	2
19	L20500-14	17564	Tail Ski Attach Bracket	2
20	L20500-15	17564	Spring Cylinder, Tail Ski	1
21	L20500-16	17564	Attach Fitting, Spring Cyl.	1
22	L20500-17	17564	Safety Cable Assy., Tail Ski	1
23	L20500-18	17564	Tail Wheel Bracket Kit, Tail Ski	1
24	L20500-18-1	17564	Tail Wheel BKT. L.H., Tail Ski	1

1.6.1	RIGHT & LEFT MAIN SKI	1.5.1
1.6.2	TAIL SKI	1.5.2

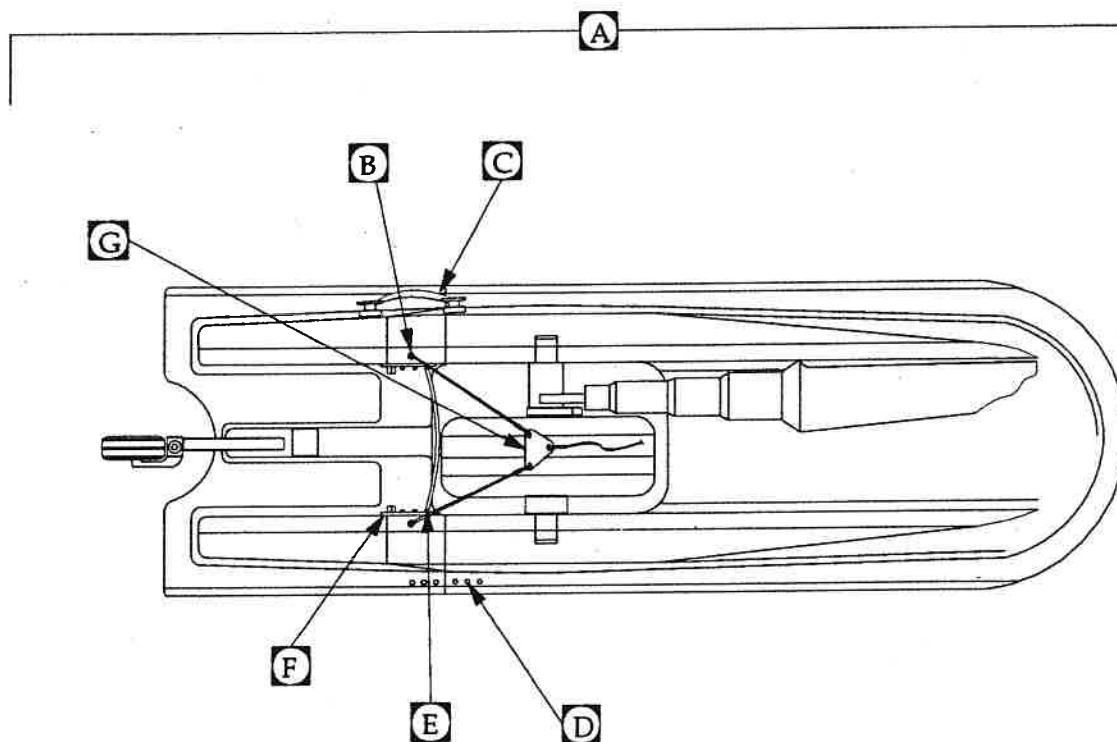
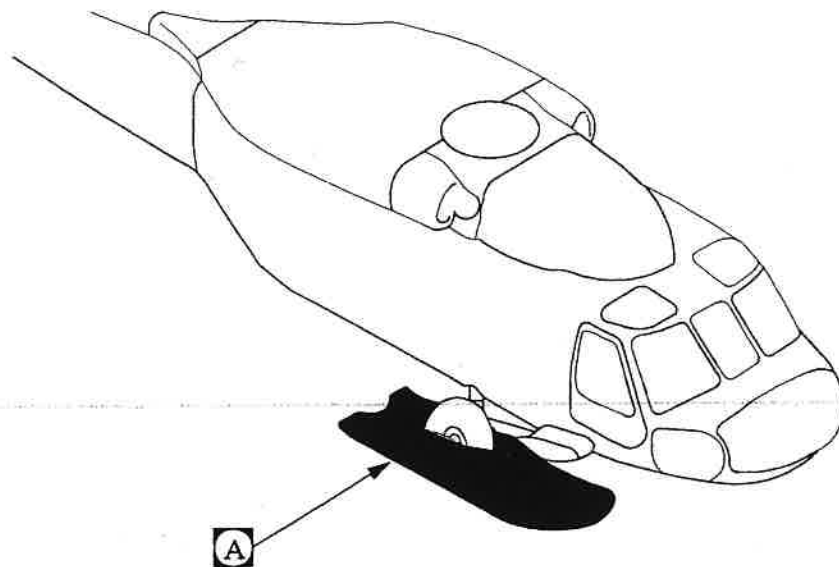
PARTS LIST

INDEX NUMBER	PART NUMBER	CODE IDENT. NO.	NOMENCLATURE	NUMBER REQUIRED
25	L20500-18-2	17564	Tail Wheel BKT. R.H. Tail Ski	1
26	L20500-18-3	17564	Spacer	2
27	D501	17564	Wheel Assy. (Lang) or 1840 Scott, Tail Ski	1
28	L20500-D501A	17564	Swivel Tao; Wheel Assy. (Lang)	2
29	30512-02	77294	Leaf Spring	2
30	30152-04	99294	Leaf Spring	2
31	A512		Spacer (Lang)	2
32	EB616-22	17564	Bolt	4
33	EB616-20	17564	Bolt	2
34	AN7-14A		Bolt	2
35	AN960-716		Washer	2
36	AN363-720		Nut	2
37	AN363-616		Nut	6
38	AN960-616		Washer	6
39	AN47-14		Eye Bolt	2
40	AN476-16		Eye Bolt	3
41	AN310-6		Nut	3
42	AN396-23		Clevis Pin	6
43	AN396-19		Clevis Pin	1
44	AN395-19		Clevis Pin	4
45	AN3-14A		Bolt	2
46	AN3-07A		Bolt	4
47	AN365-1032		Nut	6
48	380-3-2		Cotter Pin	10
49	L20500-19	175564	Lower Spring Cyl. Attach BKT. Tail Ski	1
50	AN26-21		Clevis Bolt	1
51	AN320-6		Nut	1
52	AN960-616L		Washer	1

1.6.1	RIGHT & LEFT MAIN SKI	1.5.1
1.6.2	TAIL SKI	1.5.2

PARTS LIST

INDEX NUMBER	PART NUMBER	CODE IDENT. NO.	NOMENCLATURE	NUMBER REQUIRED
53	AN509-416R-16		Screw	1
54	AN509-416R-18		Screw	1
55	A3475-020-24A		Countersunk Washer (Tinnerman)	2
56	AN8-32		Bolt	1
57	AN4-7A		Bolt	6
58	AN5-6A		Bolt	2
59	AN5-7A		Bolt	8
60	AN5-10A		Bolt	8
61	AN310-8		Nut	1
62	AN365-428		Nut	8
63	AN365-524		Nut	3
64	AN960-416		Washer	8
65	AN960-516		Washer	19
66	NASS14P524-16		Screw	1
67	30185	17564	Countersunk Washer	1
70	528D378D050	17564	Washer Special	8
71	NAS148DH16		Bolt	2
72	MS2000C8		Washer	2
73	NAS144DH10		Bolt	4
74	AN316-5R		Nut	2
75	AN565FC524H12		Screw	2
76	AN46-14		Eyebolt	1
77	L20500-42	17564	Outboard Axle Adaptor (Navy type)	2
78	L20500-5M	17564	Ski Axle Outboard (Navy type)	2



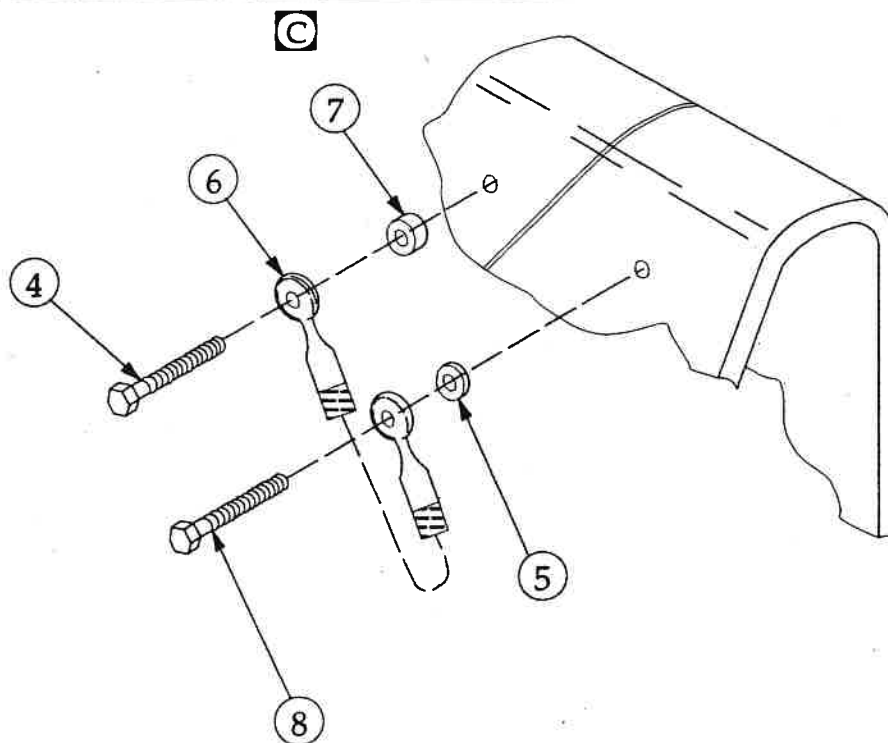
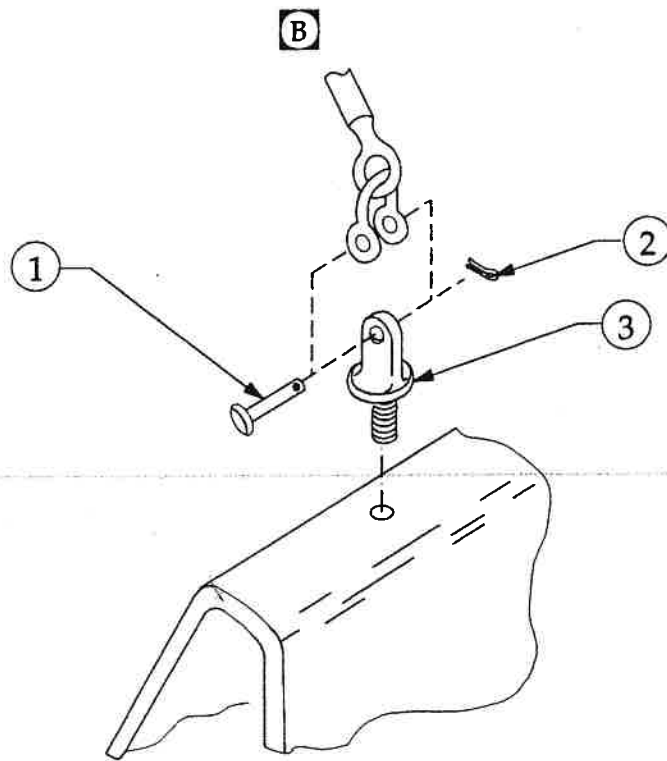


Figure 13

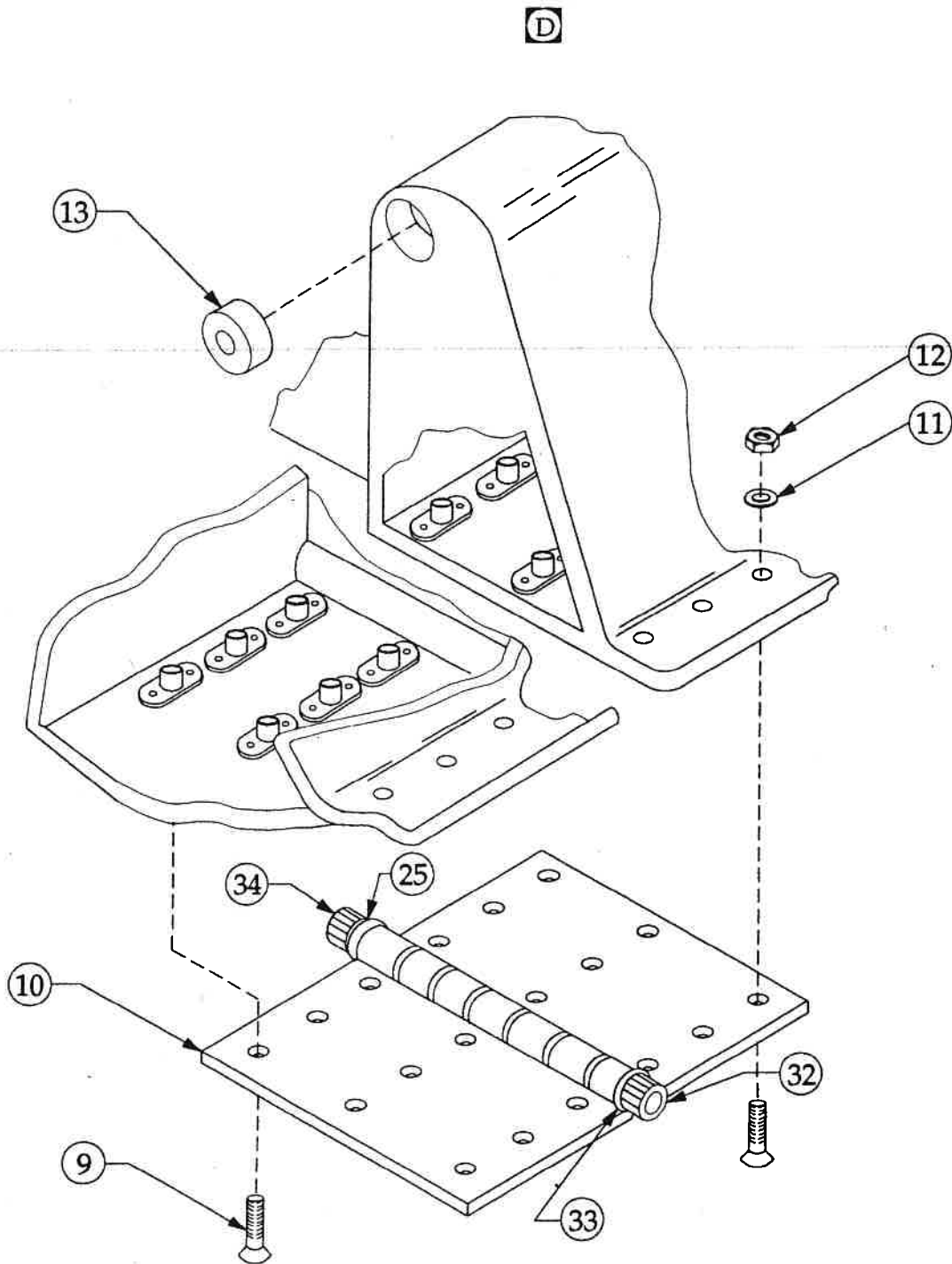
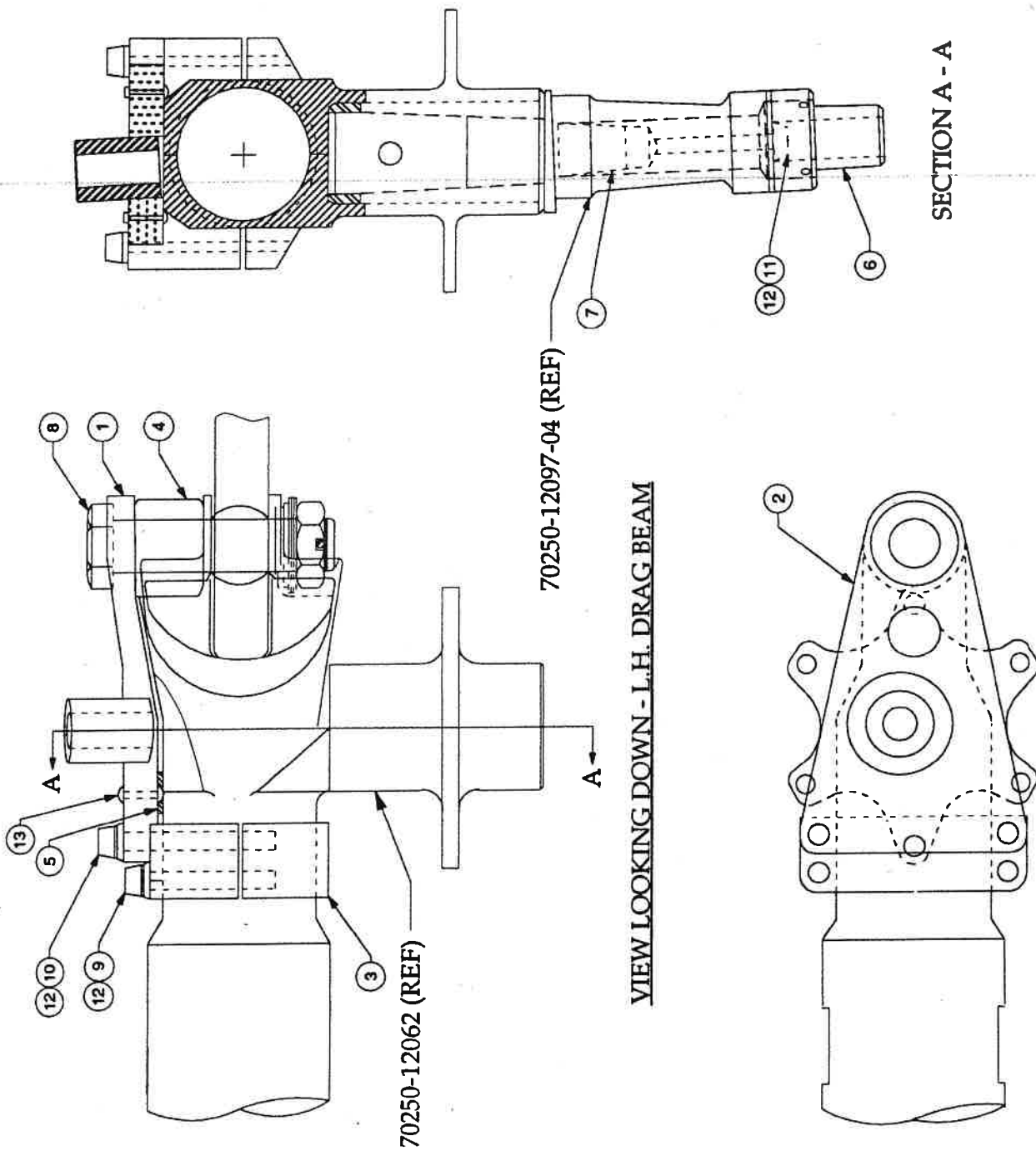


Figure 14

PARTS LIST

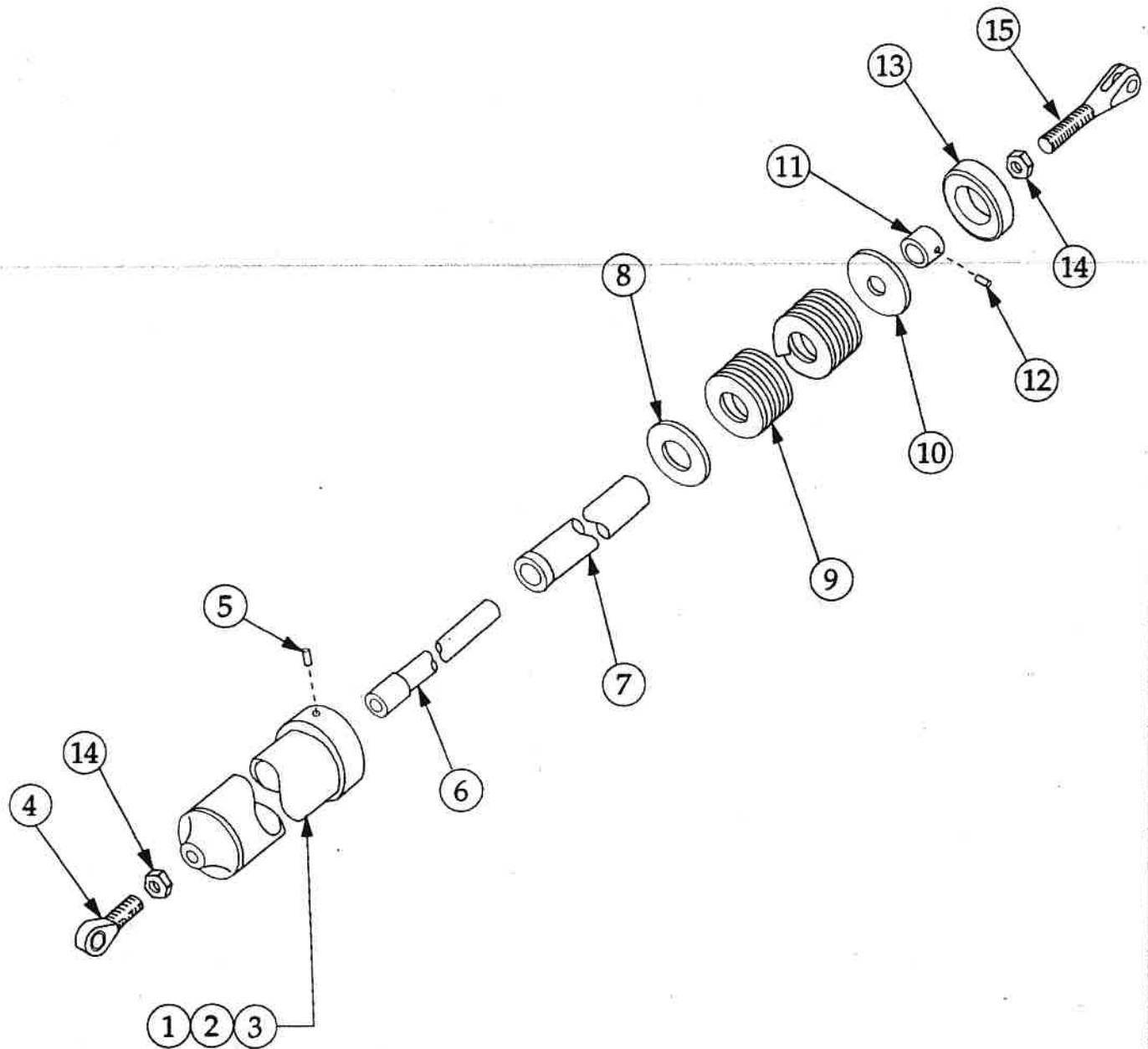
INDEX NUMBER	PART NUMBER	CODE IDENT. NO.	NOMENCLATURE	NUMBER REQUIRED
	L20500-2R	17564	Ski Assy., Main, RH (Modified for External Hoist on MH-60G Helicopter	
1	AN396-19		Pin, Clevis	2
2	AN380-3-2		Pin, Clevis	2
3	AN47-14		Bolt, eye	2
4	AN7-20A		Bolt	1
5	AN970-716		Washer	1
6	L20500-26	17564	Cable Assy. Stop	1
7	L20500-30	17564	Spacer	1
8	AN7-15A		Bolt	1
9	NAS514P-524-24	17564	Screw	36
10	L20500-22		Hinge Assy., Ski	2
11	AN960-516	17564	Washer	22
12	AN364-524		Nut	18
13	L20500-33	17564	Bumper, Rubber/1.0" O.D.X 0.37" I.D. X 0.28"L	2
14	L20500-35	17564	Shim (As Required)	2
15	L20500-28	17564	Mounting Plate, Slam Latch, LH	1
16	L20500-29	17564	Mounting Plate, Slam Latch, LH	1
17	NAS514P-524-24	17564	Screw	6
18	L20500-25	17564	Striker, Slam Latch	2
19	L20500-37	17564	Latch Lug	4
20	L20500-23	17564	Latch Assy., Slam, LH	1
21	L20500-24	17564	Latch Assy., Slam, RH	1
22	AN5-12A		Bolt	2
23	AN5-12A		Bolt	2
34	AN6-20A		Bolt	2
25	AN960-616		Washer	2
26	L20500-32	17564	Spacer	2
27	AN394-15		Pin, Clevis	2
28	L20500-31	17564	Cable, Latch	1
29	AN380-2-2		Pin, Cotter	2
30	L20500-27-1	17564	Cable Assy., Check, Upper	1
31	L20500-27-2	17564	Cable Assy., Check, Lower	2
32	NAS626-108		Bolt	4
33	MS20002C6		Washer	4
34	H20-6		Nut	4



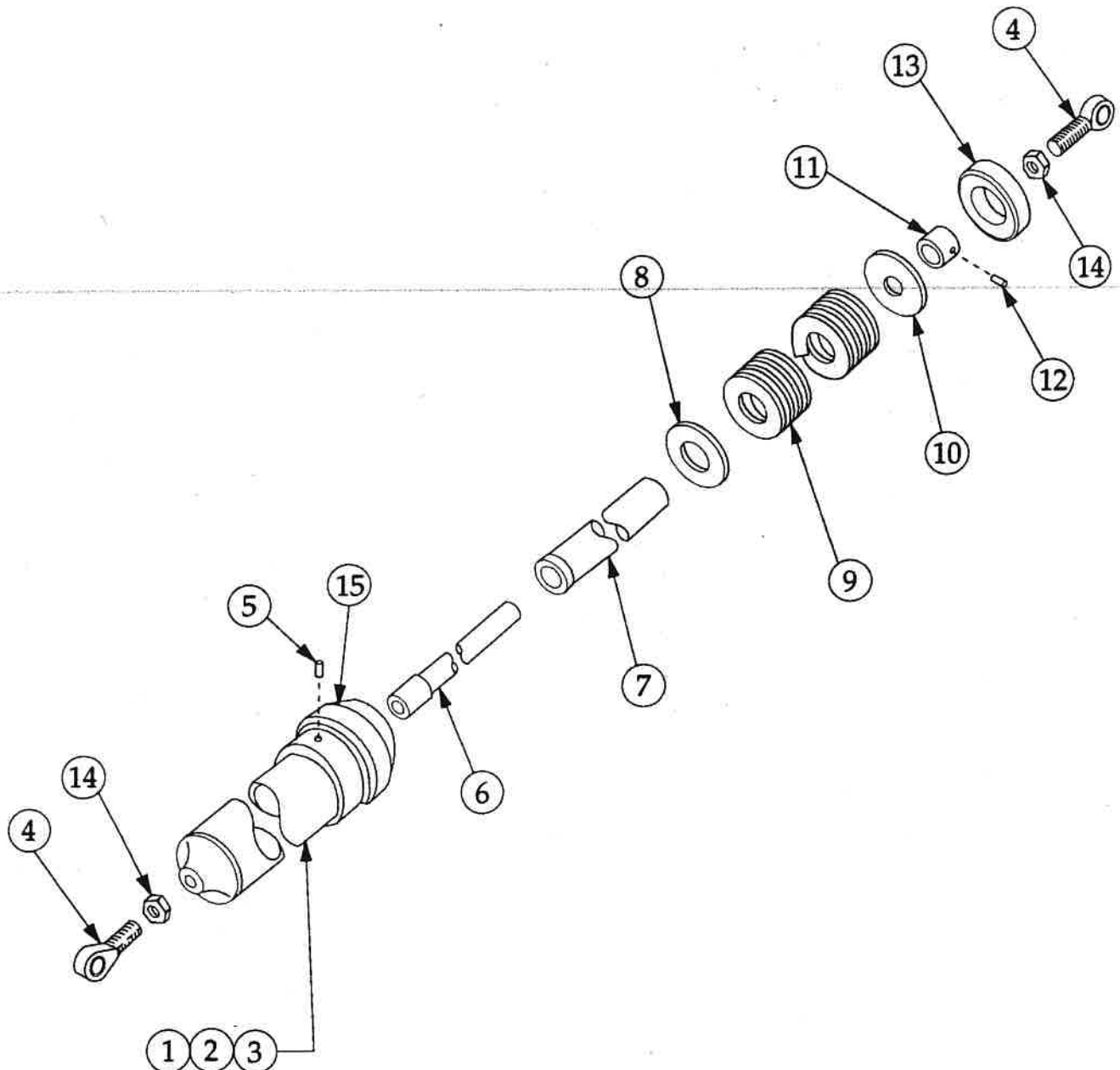
VIEW LOOKING DOWN - L.H. DRAG BEAM

VIEW LOOKING OUTBOARD - R.H. DRAG BEAM

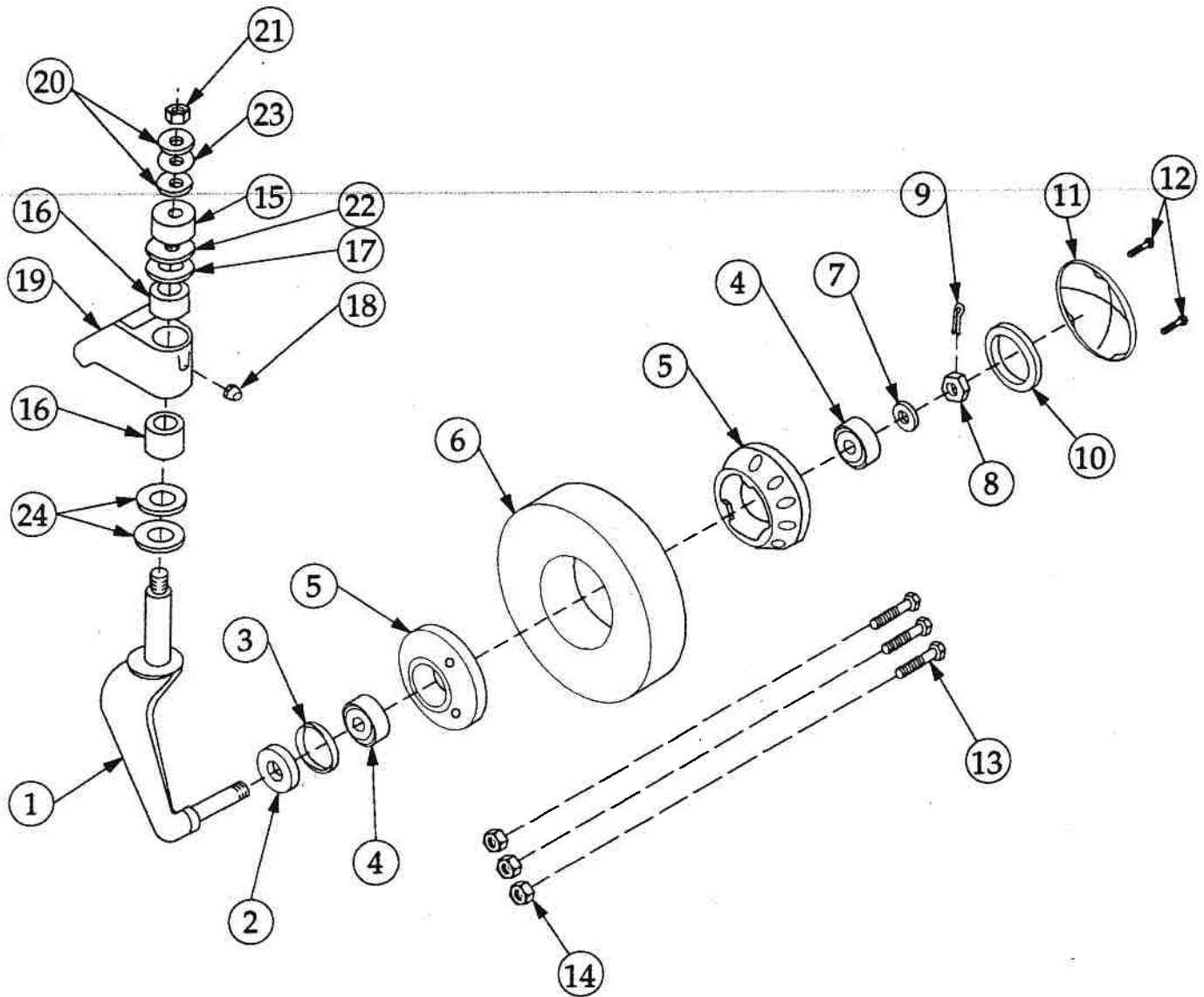
INDEX NUMBER	PART NUMBER	CODE IDENT. NO.	NOMENCLATURE	NUMBER REQUIRED
0	L20500-7	17564	SKI AXLE ADAPTER KIT	1
01	L20500-7-1	17564	Inbd. Axle Adapter Assy. L.H.	1
02	L20500-7-2	17564	Inbd. Axle Adapter Assy. R.H.	1
03	L20500-7-3	17564	Outbd. Axle Adapter Assy.	2
1	L20500-7-1-1		Adapter Plate, L.H.	1
2	L20500-7-2-1		Adapter Plate, R.H.	1
3	L20500-7-1-2		Clamp	2
4	L20500-7-1-3		Spacer	2
5	L20500-7-1-4		Shim	12
6	L20500-7-3-1	17564	Outbd. Axle Adapter Shaft	2
7	L20500-7-3-2	17564	Outbd. Axle Adapter Expander Plug	2
8	NAS6215-54D		Bolt	2
9	NAS146DH39	17564	Bolt	4
10	NAS146DH46		Bolt	4
11	NAS146-62SPL	17564	Bolt	2
12	MS20002C6		Washer	12
13	MS20613-4C16	17564	Rivet	4
14	L20500-42	17564	Outboard Axle Adapter (Navy Type)	2



INDEX NUMBER	PART NUMBER	CODE IDENT. NO.	NOMENCLATURE	NUMBER REQUIRED
1	L20500-8-1	17564	Tube	1
2	L20500-8-4	17564	End Fitting	1
3	L20500-15-8	17564	Tube	1
4	HMX6G		Rod End	1
5	MS171522		Spring Pin	1
6	L20500-8-3	17564	Tube	1
7	L20500-8-2	17564	Tube Assembly	1
8	L20500-15-5	17564	Washer	2
9	L20500-8-20058		Spring	1
10	L20500-15-6	17564	Washer	1
11	L20500-15-7	17564	Tube	1
12	MS171652		Spring Pin	1
13	L20500-15-9	17564	Nut	1
14	AN316-7		Nut	2
15	L20500-8-8	17564	Fork End	1



INDEX NUMBER	PART NUMBER	CODE IDENT. NO.	NOMENCLATURE	NUMBER REQUIRED
1	L20500-15-1	17564	Tube	1
2	L20500-15-4	17564	End Fitting	1
3	L20500-15-8	17564	Tube	1
4	HMX6G		Rod End	2
5	MS171522		Spring Pin	1
6	L20500-15-3	17564	Tube	1
7	L20500-15-2	17564	Tube Assembly	1
8	L20500-15-5	17564	Washer	1
9	R68		Spring	1
10	L20500-15-6	17564	Washer	1
11	L20500-15-7	17564	Tube	1
12	MS171652		Spring Pin	1
13	L20500-15-9	17564	Nut	1
14	AN316-7		Nut	2
15	L20500-15-10	17564	Plastic Bumper	1

D

INDEX NUMBER	PART NUMBER	CODE IDENT. NO.	NOMENCLATURE	NUMBER REQUIRED
1	C503		Fork	1
2	A547		Garlock Seal	1
3	A546		Spacer	1
4	A518,A519		Bearing Set	2
5	A544, A545		Wheel Hub Kit	1
6	A590		Tire	1
7	A531		Washer	1
8	AN320-7		Nut	1
9	AN380-3-2		Cotter Pin	1
10	A524		Grease Retainer	1
11	A522		Cap Hub	1
12	A523		Screw	3
13	AN502-10-26		Bolt	3
14	AN365-1032		Nut	3
15	AN503		Cap	1
16	A554		Bearing Torrington	2
17	A515		Washer	1
18	A525		Fitting, Grease	1
19	C-501		Bracket Assembly	1
20	AN960-716		Washer	2
21	AN363-720		Nut	1
22	AN970-5SPL		Washer	1
23	SP3515-22-09		Spring Washer, Shakeproof	1
24	TT1503		Oilite Thrust Washer	1