

CESSNA 180 SERIES

EXTENDED BAGGAGE, INSTALLATION

SCALE		TOLERANCES:
NOT TO SCALE		±3° ± ¹ / ₈
DR. BY TDK	APP. BY	DIMENSION IN INCHES
DATE 5-13-02	DATE	

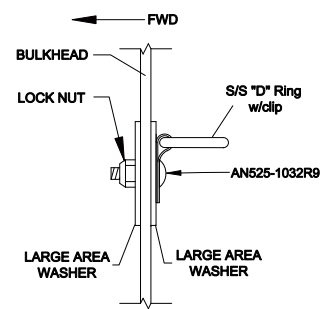
NO. REQD	PART NO.	SIZE	DESCRIPTION	SPEC.
4	AN 365	-1032	LOCK NUT	AN
8	AN 970	-3	LARGE AREA WASHER	AN
4	SSDR-3/4		"D" RING	
13	A10-80	10	B.F. GOODRICH RIVNUTS	
13	AN 526	-1032 R10	TRUSS HEAD SCREWS	AN
1	2004-1	27 ¹ / ₄ X 24 ³ / ₄ X 25 ³ / ₄	COMPOSITE BULKHEAD	170-1
1	2004-2	31 ⁵ / ₈ X 11 ⁵ / ₁₆ X 29 ³ / ₄	COMPOSITE FLOOR	170-2
1	2015009-3		CESSNA CARGO NET	
13	MS35333	-39	LOCK WASHER	MS
13	AN 960	-10L	WASHER	AN
4	AN525	-1032 R9	SCREW	AN

NOTES:

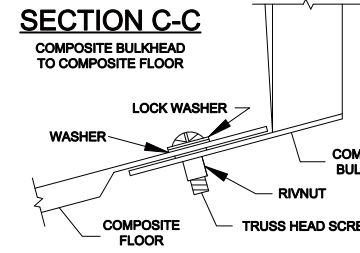
- SEE INSTALLATION INSTRUCTIONS FOR DETAILED PROCEDURE.
- SOME INSTALLATIONS MAY REQUIRE MOVING THE ELT TO AVOID INTERFERENCE.
- THE STRINGER AND DOUBLERS AT STA. 108 ARE ONLY TO ATTACH UPHOLSTERY, THEY MUST BE REMOVED FOR THIS INSTALLATION.
- NOTCH THE COMPOSITE BULKHEAD TO ACCOMODATE ANY WIRING. USE REQUIRED FILE, **CAUTION: WEAR PROPER PROTECTION, DO NOT BREATHE DUST!**
- OPTIONAL INSTALLATION:**
USE ANCHOR NUT MS21059L3 IN PLACE OF RIVNUTS. USE AN426 RIVETS, DIMPLE THE BULKHEAD AND DOUBLER, COUNTER SINK THE COMPOSITE FLOOR.
- SEE SHEET 2 FOR SECTION DETAILS B-B, C-C, D-D.

CHG.LET.	CHANGES	BY	DATE
B	REPLACED EYEBOLT WITH "D" RING	JDH	7 DEC 12
A	ADDED OPTIONAL INSTALLATION	JDP	5-13-02

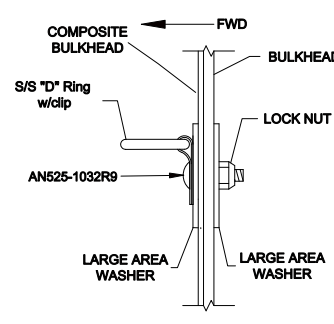
REVISIONS



SECTION A-A
"D" RING INSTALLATION THROUGH BULKHEAD STA. 108



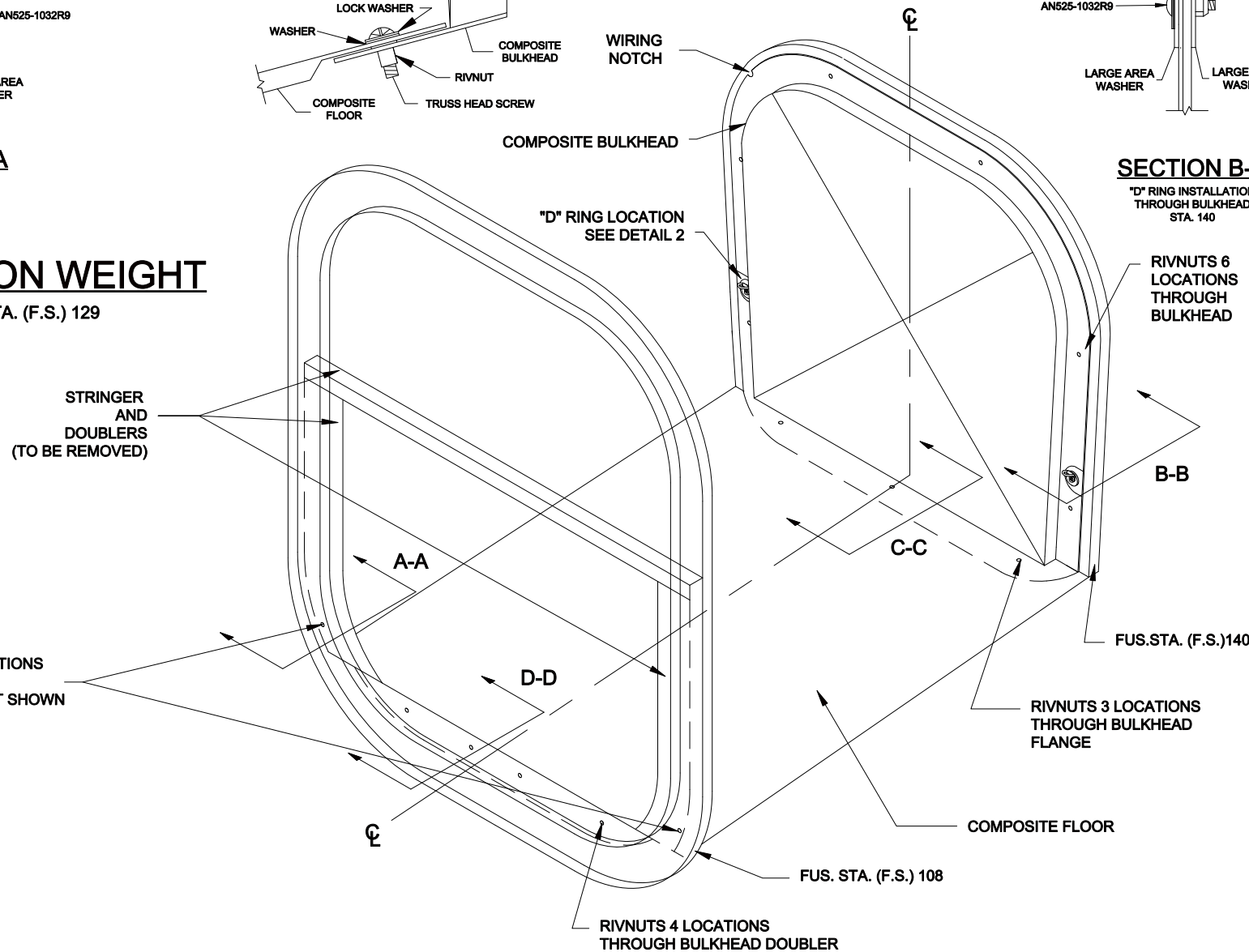
SECTION C-C
COMPOSITE BULKHEAD TO COMPOSITE FLOOR



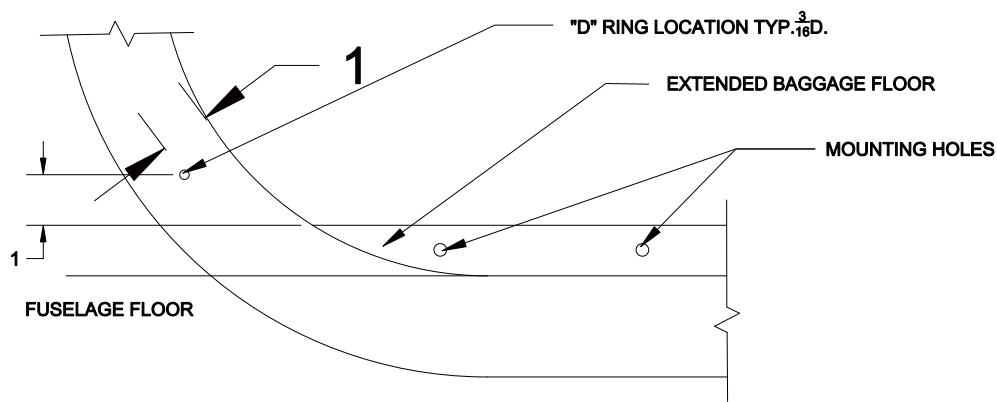
SECTION B-B
"D" RING INSTALLATION THROUGH BULKHEAD STA. 140

INSTALLATION WEIGHT

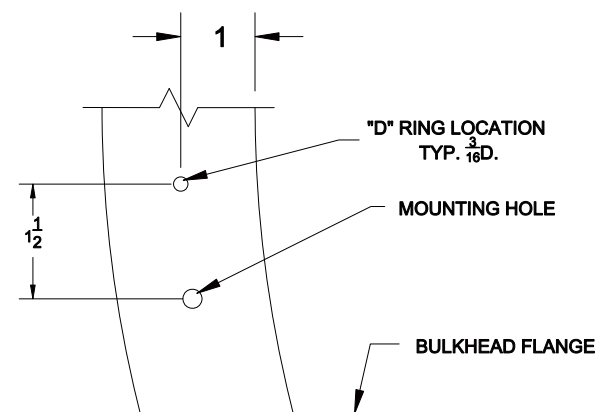
5# AT FUS. STA. (F.S.) 129



"D" RING LOCATIONS SEE DETAIL 1 ("D" RINGS NOT SHOWN FOR CLARITY)



1
DETAIL
F.S. #108 "D" RING LOCATION-TYP. 2
LEFT SIDE SHOWN



2
DETAIL
F.S. #140 "D" RING LOCATION-TYP. 2
LEFT SIDE SHOWN