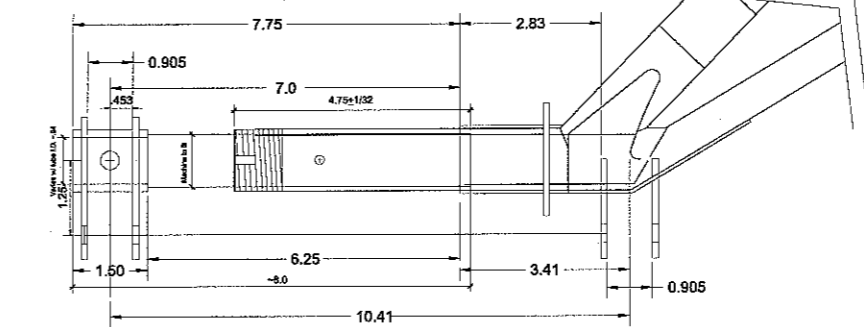
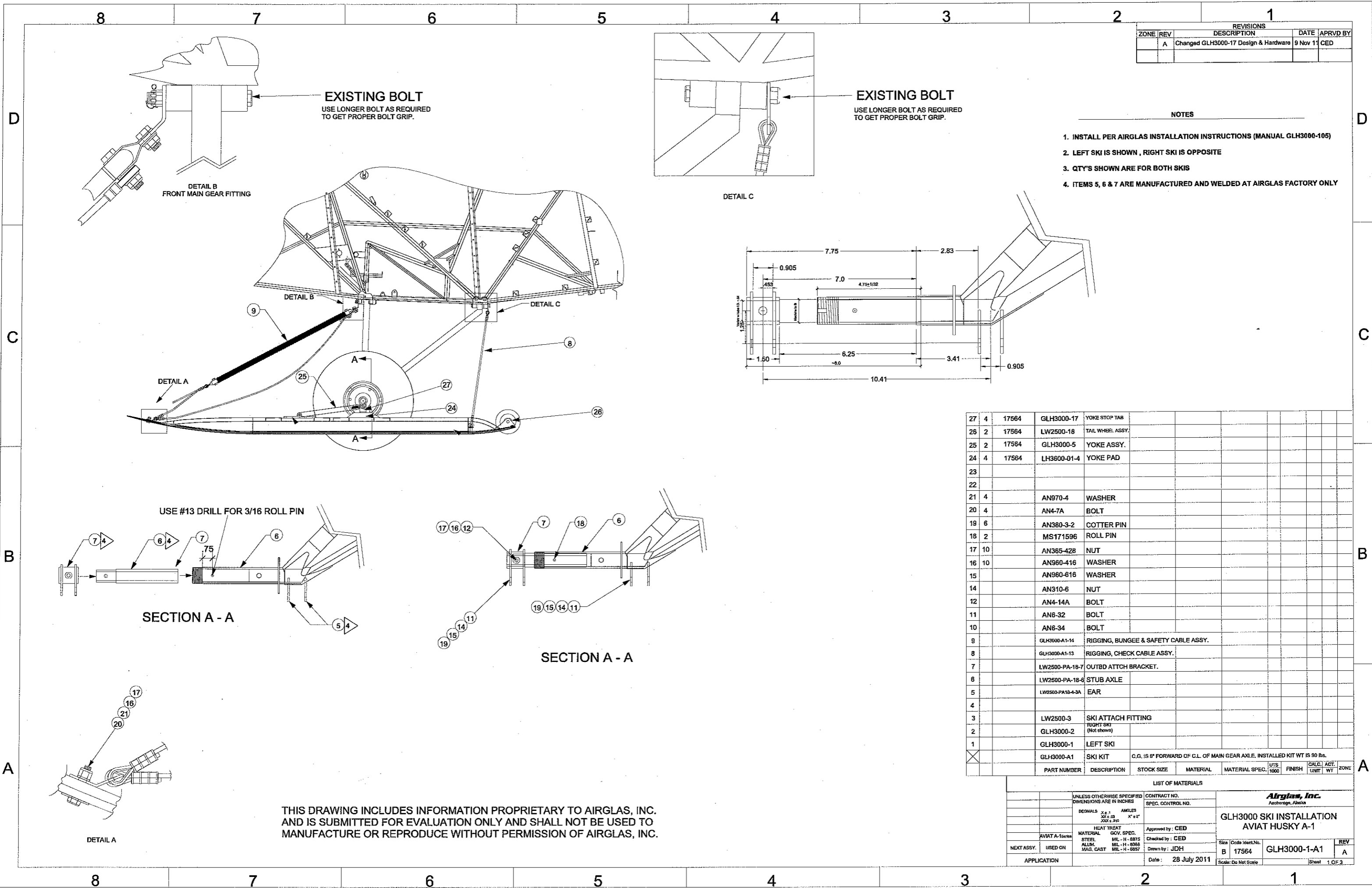


REVISIONS		DATE	APRVD BY
ZONE	REV	DESCRIPTION	
	A	Changed GLH3000-17 Design & Hardware	9 Nov 11 CED

NOTES

1. INSTALL PER AIRGLAS INSTALLATION INSTRUCTIONS (MANUAL GLH3000-105)
2. LEFT SKI IS SHOWN, RIGHT SKI IS OPPOSITE
3. QTY'S SHOWN ARE FOR BOTH SKIS
4. ITEMS 5, 6 & 7 ARE MANUFACTURED AND WELDED AT AIRGLAS FACTORY ONLY

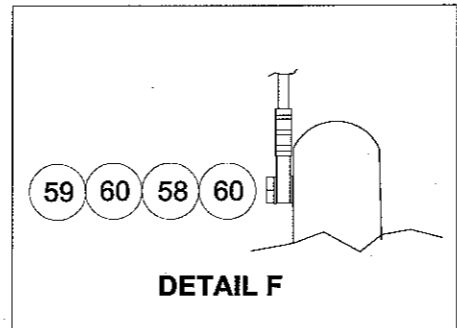
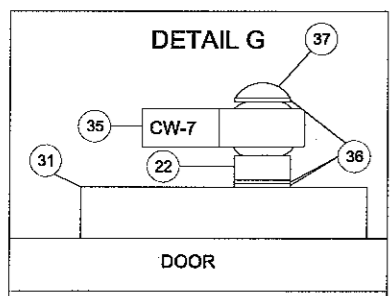
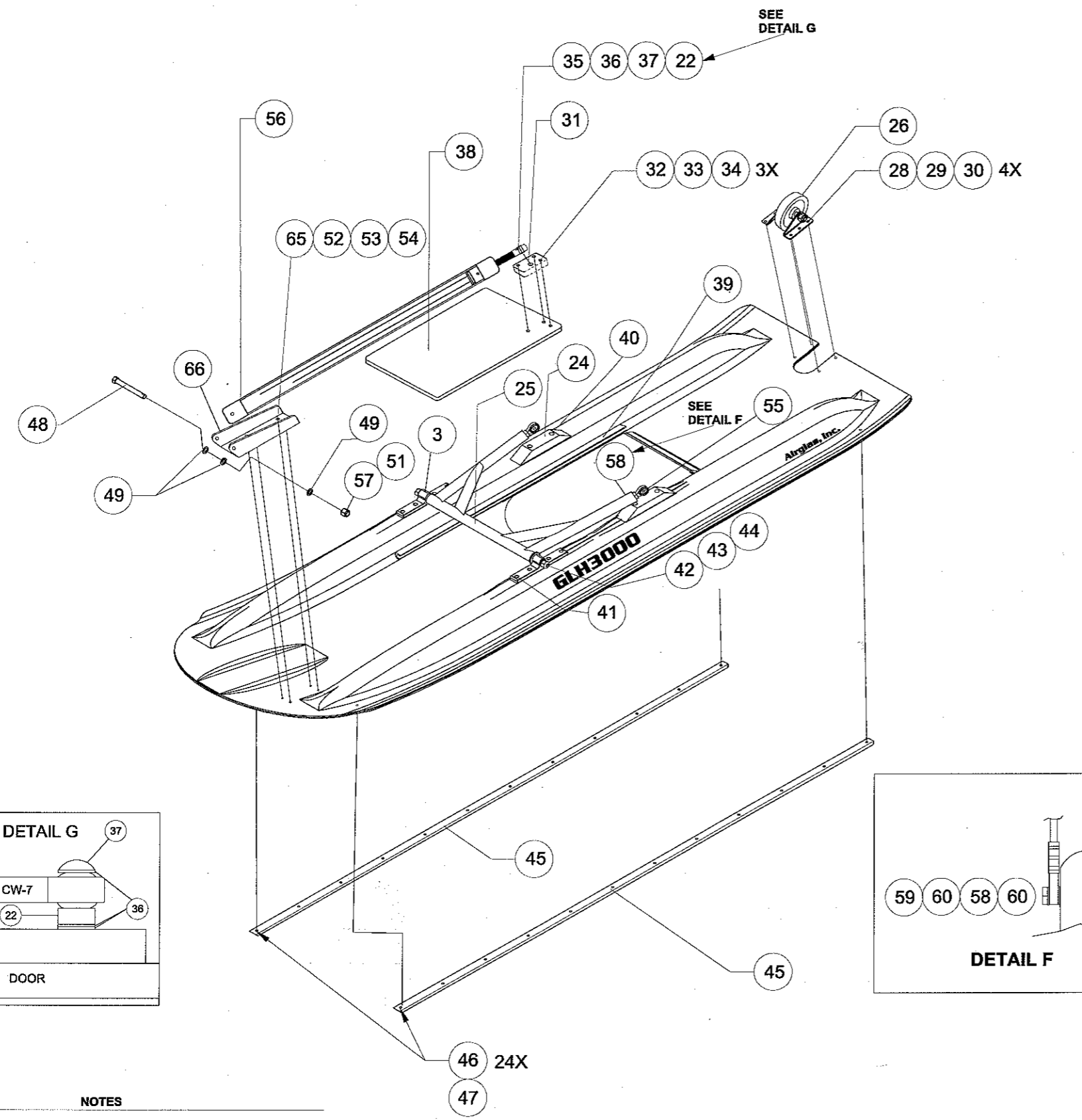


QTY	PART NO.	DESCRIPTION	STOCK SIZE	MATERIAL	MATERIAL SPEC.	UTS 1000	FINISH	CALE	ACT.	ZONE		
27	4	17564	GLH3000-17	YOKE STOP TAB								
26	2	17564	LW2500-18	TAIL WHEEL ASSY.								
25	2	17564	GLH3000-5	YOKE ASSY.								
24	4	17564	LH3600-01-4	YOKE PAD								
23												
22												
21	4		AN970-4	WASHER								
20	4		AN4-7A	BOLT								
19	6		AN380-3-2	COTTER PIN								
18	2		MS171596	ROLL PIN								
17	10		AN365-42B	NUT								
16	10		AN960-416	WASHER								
15			AN960-616	WASHER								
14			AN310-6	NUT								
12			AN4-14A	BOLT								
11			AN6-32	BOLT								
10			AN6-34	BOLT								
9			GLH3000-A1-14	RIGGING, BUNGEE & SAFETY CABLE ASSY.								
8			GLH3000-A1-13	RIGGING, CHECK CABLE ASSY.								
7			LW2500-PA-18-7	OUTBD ATTCH BRACKET.								
6			LW2500-PA-18-6	STUB AXLE								
5			LW2500-PA18-4-3A	EAR								
4												
3			LW2500-3	SKI ATTACH FITTING								
2			GLH3000-2	RIGHT SKI (Not shown)								
1			GLH3000-1	LEFT SKI								
⊗			GLH3000-A1	SKI KIT	C.G. IS 6" FORWARD OF C.L. OF MAIN GEAR AXLE. INSTALLED KIT WT IS 90 lbs.							
			PART NUMBER	DESCRIPTION	STOCK SIZE	MATERIAL	MATERIAL SPEC.	UTS 1000	FINISH	CALE	ACT.	ZONE

THIS DRAWING INCLUDES INFORMATION PROPRIETARY TO AIRGLAS, INC. AND IS SUBMITTED FOR EVALUATION ONLY AND SHALL NOT BE USED TO MANUFACTURE OR REPRODUCE WITHOUT PERMISSION OF AIRGLAS, INC.

UNLESS OTHERWISE SPECIFIED DIMENSIONS ARE IN INCHES		CONTRACT NO.	Airglas, Inc. Fairbanks, Alaska	
DECIMALS	XX.XX	SPEC. CONTROL NO.	GLH3000 SKI INSTALLATION AVIAT HUSKY A-1	
ANGLES	X° X'	Approved by: CED	Size	Code IdentNo.
X' X"		Checked by: CED	B	17564
HEAT TREAT	MIL - H - 8875	Drawn by: JDH	GLH3000-1-A1	REV
MATERIAL GOV. SPEC.	MIL - H - 8088	Date: 28 July 2011	Scale: Do Not Scale	A
STEEL	MIL - H - 8875			
ALLIUM.	MIL - H - 8088			
MAG. CAST	MIL - H - 8875			
AVIAT A-1 Series				
NEXT ASSY. USED ON				
APPLICATION				

ZONE REV		REVISIONS DESCRIPTION	DATE	APRVD BY
A		Changed GLH3000-17 Design & Hardware	9 Nov 11	CED



NO.	QTY	CODE IDENT. NO.	PART NUMBER	DESCRIPTION	STOCK SIZE	MATERIAL	MATERIAL SPEC.	UTS 1000	FINISH	CALC. UNIT	ACT. WT	ZONE
66	2	17564	LH3600-9A-6	MOUNT, HYDRAULIC CYL.								
65	8		A3235-020-24A	COUNTERSINK WASHER								
64	2		AN365-524	NUT								
63	2		AN960-516	WASHER								
62	2	17564	30185	WASHER								
61	2		NAS514P524-16	SCREW								
60	4		AN960-716	WASHER								
59	2		AN6-10A	BOLT								
58	2	17564	GLH3000-10	YOKE SAFETY RESTRAINING CABLE (DETAIL F)								
57	2		AN380-2-2	COTTER PIN								
56	2	17564	LH3600-9A	HYDRAULIC CYLINDER ASSEMBLY								
55	4		HMX6G	ROD END								
54	8		MS21042-3	NUT								
53	8		AN960-10	WASHER								
52	8		AN509-10R-12	SCREW								
51	2		AN310-4	NUT								
50	2		AN960-416	WASHER								
49	6		AN960-416L	WASHER								
48	2		AN4-25	BOLT								
47	48		MS21042-3	NUT								
46	48		AN509-10R-12	SCREW								
45	4	17564	GLH3000-01-3	RUNNER								
44	4		AN365-624C	NUT								
43	4		AN960-616	WASHER								
42	2	17564	GLH3000-5-6	RETAINING ROD, YOKE								
41	16		AN5-11A	BOLT								
40	8		SSB-6-12	RIVET								
39	4	17564	GLH3000-01-2	GUIDE								
38	2	17564	GLH3000-8-1	DOOR								
37	2		AN27-23	CLEVIS BOLT								
36	6		AN960-716	WASHER								
35	2		CW-7	ROD END								
34	6		AN364-428	NUT								
33	6		AN960-416	WASHER								
32	6		AN509-416R18	SCREW								
31	2	17564	GLH3000-9-8	DOOR, CLYINDER ATTACH BLOCK								
30	8		AN365-428A	NUT								
29	8		AN960-416	WASHER								
28	8		AN4-7A	BOLT								
X	1	17564	GLH3000	SKI KIT								
				C.G. IS 8" FORWARD OF C.L. OF MAIN GEAR AXLE, INSTALLED KIT WT IS 90 lbs.								

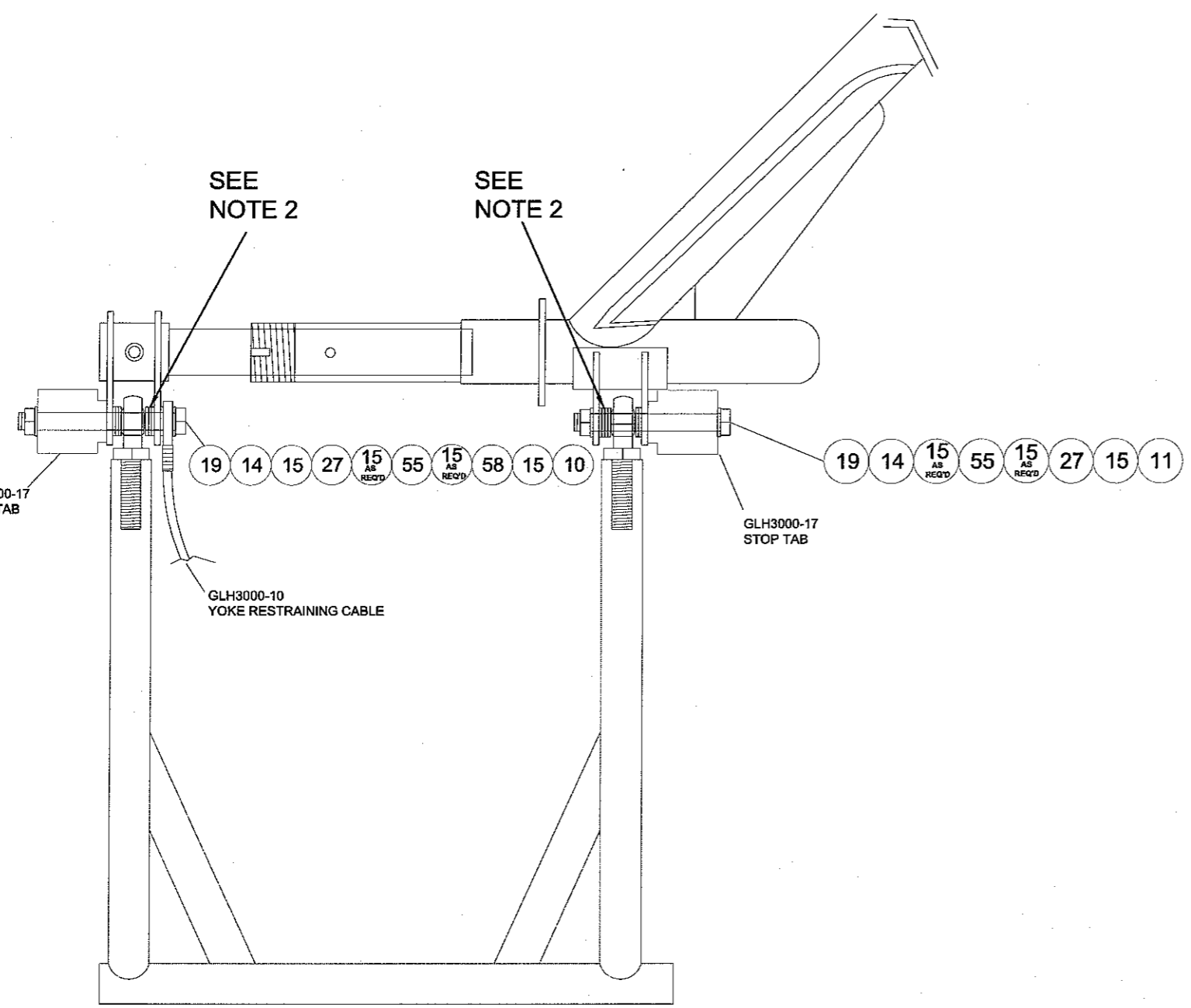
NOTES

1. INSTALL PER AIRGLAS INSTALLATION INSTRUCTIONS (MANUAL GLH3000-105)
2. LEFT SKI IS SHOWN, RIGHT SKI IS OPPOSITE
3. QTY'S SHOWN ARE FOR BOTH SKIS
4. ITEMS 4, 5, 6 & 7 ARE MANUFACTURED AND WELDED AT AIRGLAS FACTORY ONLY

THIS DRAWING INCLUDES INFORMATION PROPRIETARY TO AIRGLAS, INC. AND IS SUBMITTED FOR EVALUATION ONLY AND SHALL NOT BE USED TO MANUFACTURE OR REPRODUCE WITHOUT PERMISSION OF AIRGLAS, INC.

UNLESS OTHERWISE SPECIFIED DIMENSIONS ARE IN INCHES		CONTRACT NO.		Airglas, Inc. Anchorage, Alaska	
DECIMALS	X ± .1	ANGLES		GLH3000 SKI INSTALLATION AVIAT HUSKY A-1	
	30X ± .03			Size	Code Ident. No.
	3000 ± .210			B	17564
				Scale:	Do Not Scale
				Sheet	2 OF 3
				REV	A
				Date:	28 JULY 2011
				Checked by:	CED
				Drawn by:	JDH
				Application	

REVISIONS				
ZONE	REV	DESCRIPTION	DATE	APRVD BY
	A	Changed GLH3000-17 Design & Hardware	9 Nov 11	CED



NOTES

1. INSTALL HARDWARE AS DEPICTED. USE AN960-616 WASHERS TO SPACE THE YOKE BETWEEN GEAR MOD LUGS. FAILURE TO INCLUDE WASHER BETWEEN YOKE AND LUGS MAY CAUSE CONTACT OF TIRE ON SKI.
2. ALIGNMENT OF WHEEL INSIDE WHEEL WELL AREA CAN BE MADE BY ADJUSTMENT OF WASHER STACK (ITEM #15). CENTER WHEEL IN WHEEL WELL.
3. YOKE ROD ENDS CAN BE TURNED IN OR OUT TO ADJUST ALIGNMENT OF SKI. SKI SHOULD ALIGN WITH WHEELS WHEN COMPLETE.

DETAIL "D"

THIS DRAWING INCLUDES INFORMATION PROPRIETARY TO AIRGLAS, INC. AND IS SUBMITTED FOR EVALUATION ONLY AND SHALL NOT BE USED TO MANUFACTURE OR REPRODUCE WITHOUT PERMISSION OF AIRGLAS, INC.

UNLESS OTHERWISE SPECIFIED DIMENSIONS ARE IN INCHES		CONTRACT NO.	Airglas, Inc. Anchorage, Alaska	
DECIMALS $\times \pm .1$ ANGLES $\times \pm .05$ 200 & 300		SPEC. CONTROL NO.	GLH3000 SKI INSTALLATION AVIAT HUSKY A-1	
HEAT TREAT GOV. SPEC.		Approved by: CED	Checked by: CED	
AVIAT A-16sec	MATERIAL STEEL MIL-H-8975 ALUM. MIL-H-8958 MAG. CAST MIL-H-8957	Checked by: CED	Date: 28 July 2011	Scale: Do Not Scale
NEXT ASSY.	USED ON	APPLICATION	Size / Code Ident. No. B 17584	REV GLH3000-1-A1 A