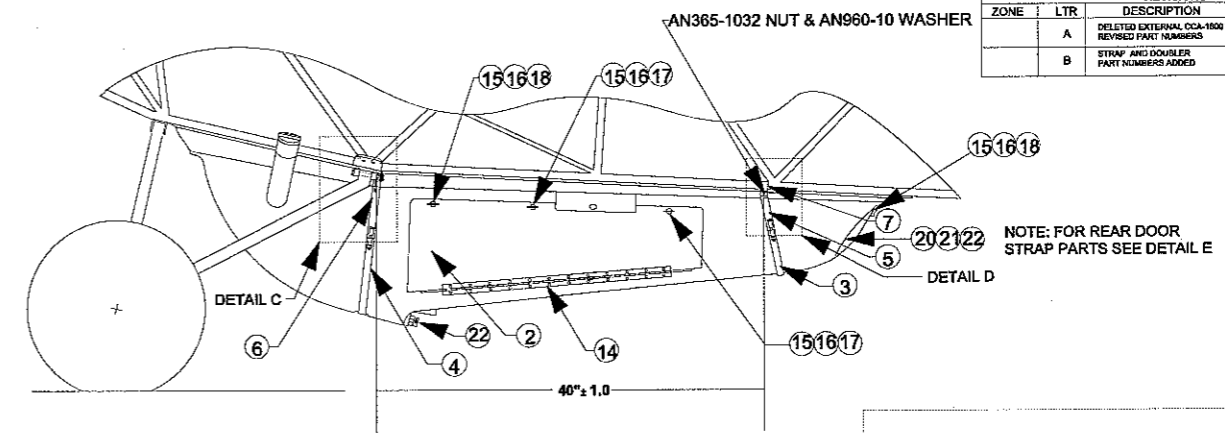
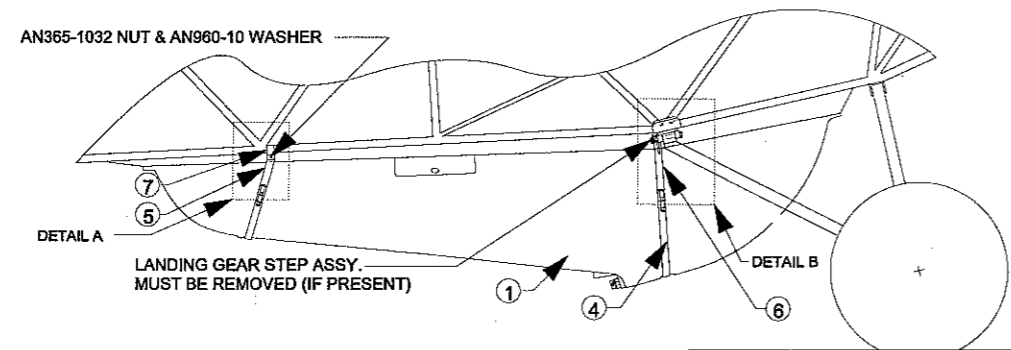
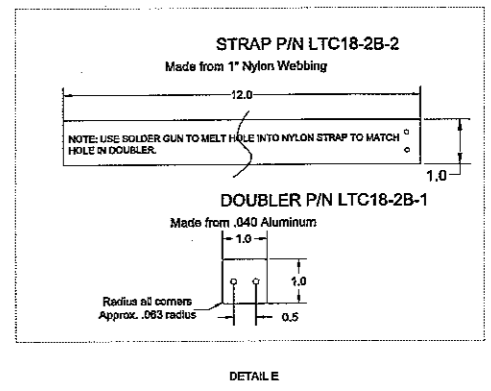
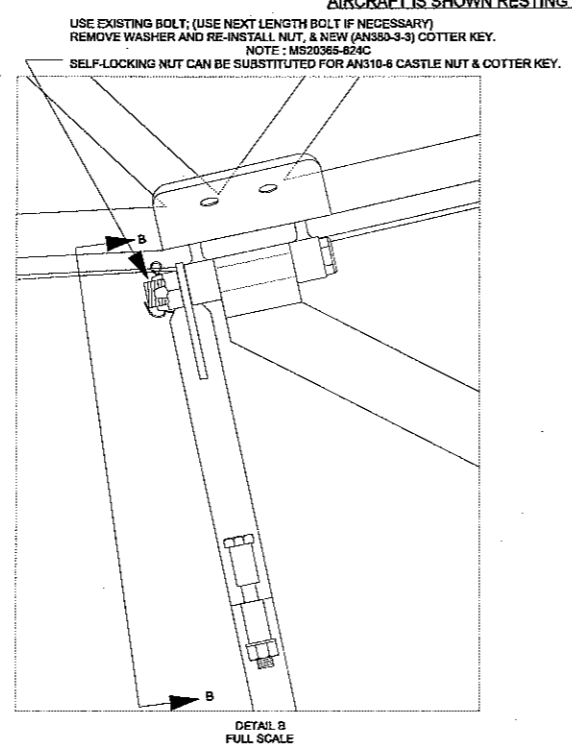
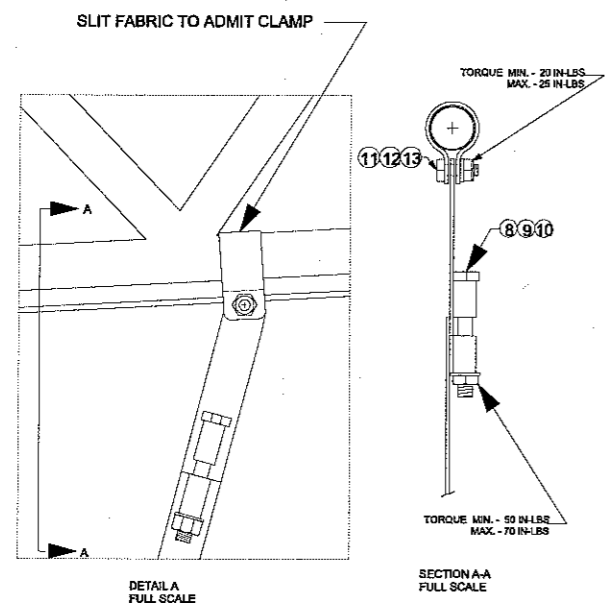


REVISIONS				
ZONE	LTR	DESCRIPTION	DATE	APPRVD
A		DELETED EXTERNAL OCA-1000 VENT, REVISED PART NUMBERS	7 NOV 11	CED
B		STRAP AND DOUBLER PART NUMBERS ADDED	23 APR 2012	CDB

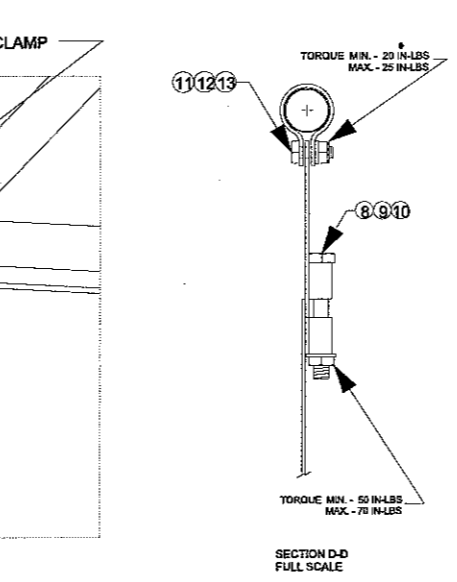
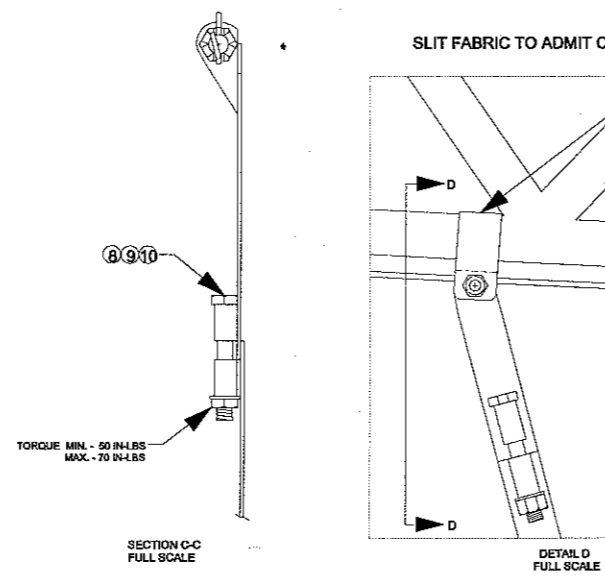
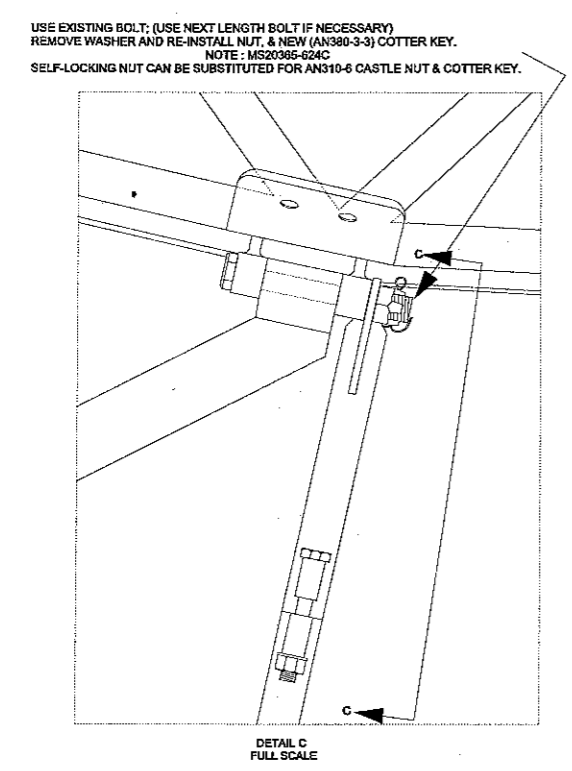


AIRCRAFT IS SHOWN RESTING ON THE GROUND WITH 8.50 x 6 TIRES INSTALLED



NOTES

- FOR INSTALLATION ON FLOATS SEE AIRGLAS INSTALLATION MANUAL LC18/LTC18-105 (SEC. 5.2)
- LTC18-1214 HAS A MAXIMUM CAPACITY OF 159LBS. (FUEL & CARGO WEIGHT COMBINED), WITH A FUEL CAPACITY OF 18 US GAL. (17.5 USABLE)**



NO.	QTY	CODE IDENT. NO.	PART NUMBER	DESCRIPTION	STOCK SIZE	MATERIAL	MATERIAL SPEC.	UTS 1000	FINISH	CALC. UNIT	ACT. WT	ZONE
22	2		LTC18-2B-2	STRAP								
21	2		LTC18-2B-1	DOUBLER								
20	1		LTC18-2B	DOOR								
19	1		AG34004	FUEL CAP								
18	1		S5A-200	SPRING								
17	2		S5A-250	SPRING								
16	3		GA5-375	GROMMET								
15	3		AJ5-45	STUD, DZUS								
14	1		MS20257P2	HINGE								
13	2		AN365-1032	NUT								
12	2		AN960-10	WASHER								
11	2		AN3-4A	BOLT								
10	4		AN365-428	NUT								
9	4		AN960-416	WASHER								
8	4		AN4-24A or MS80727-16	BOLT								
7	2		LTC18-8	CLAMP								
6	2		LTC18-6	STRAP ASSY.								
5	2		LTC18-5	STRAP ASSY.								
4	1		LTC18-1214-4	STRAP ASSY.								
3	1		LTC18-1214-3	STRAP ASSY.								
2	1		LTC18-2	DOOR								
1	1		LTC18-1214-1	CARGO POD								
1	1		LTC18-1214	POD KIT								

LIST OF MATERIALS

UNLESS OTHERWISE SPECIFIED DIMENSIONS ARE IN INCHES

CONTRACT NO. \_\_\_\_\_  
SPEC. CONTROL NO. \_\_\_\_\_

Approved by: CED

Checked by: CED

Drawn by: JDH

Date: 28 Jun 2011

Scale: NOTED

Sheet: 1 OF 1

Application: \_\_\_\_\_

Material: PA-14, PA-12, STEEL, ALUM., MAG. CAST

Heat Treat: \_\_\_\_\_

Gov. Spec.: MIL-H-8875, MIL-H-8898, MIL-H-8897

Part No.: B 17564

Part Name: LTC18-1214 FUEL/CARGO POD INSTALLATION

Rev: B