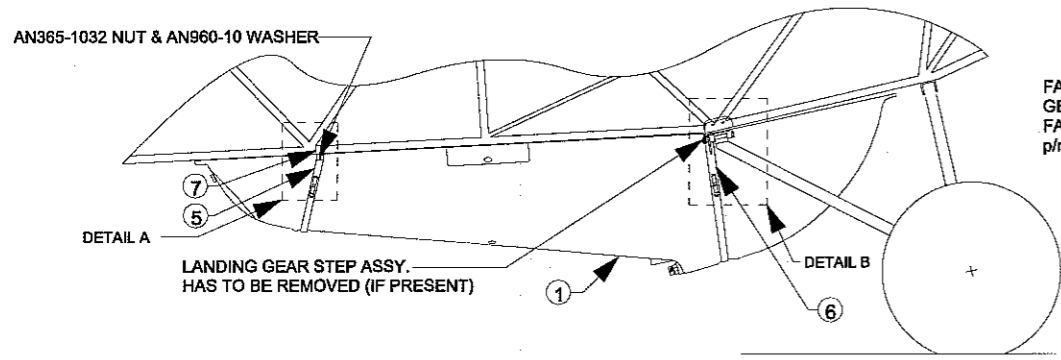
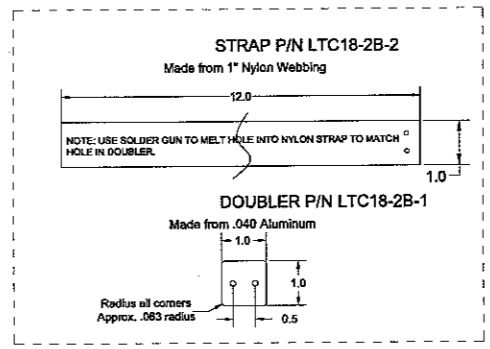
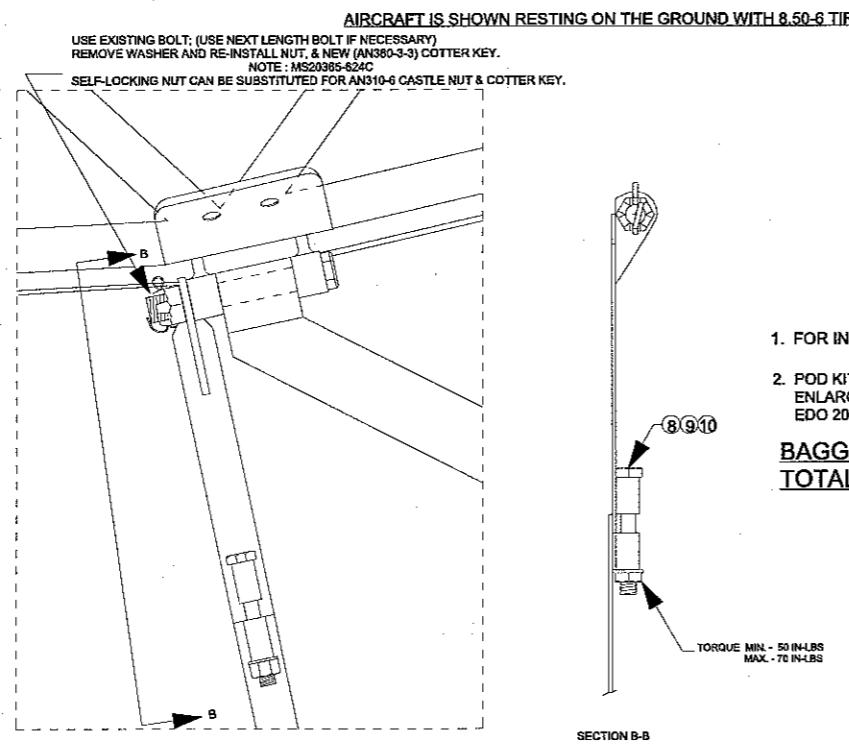
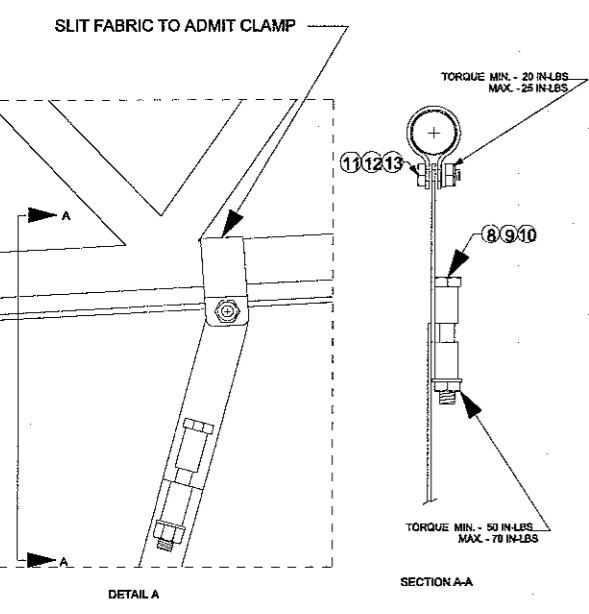
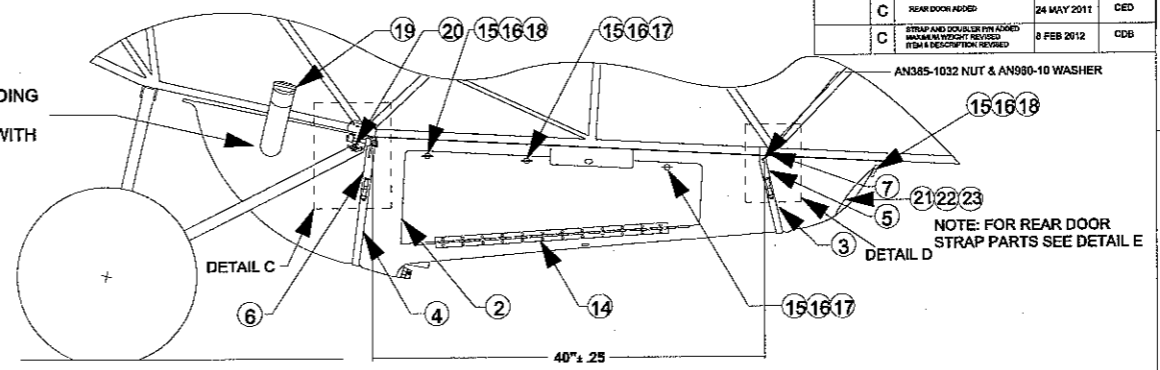


ZONE	LTR	REVISIONS	DATE	APPROV BY
ALL	A	ADDED INSTALLATION OF FUEL TIE ROD AND DOOR, FUEL VENT, VENT HOLES, NOTES	5-18-98	WKL
ALL	B	ADDED GROMMETS AND CORRECTED	18 JUNE 2008	CEJ
	C	REAR DOOR HOIST	24 MAY 2011	CEJ
	C	STRAP AND DOUBLER PARTS ADDED FROM DESCRIPTION REVISED	3 FEB 2012	CDB



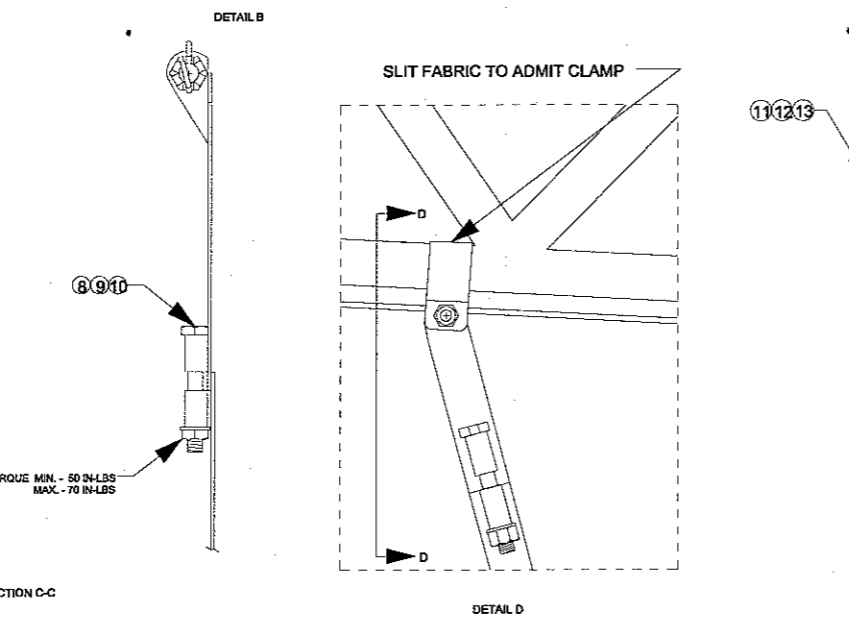
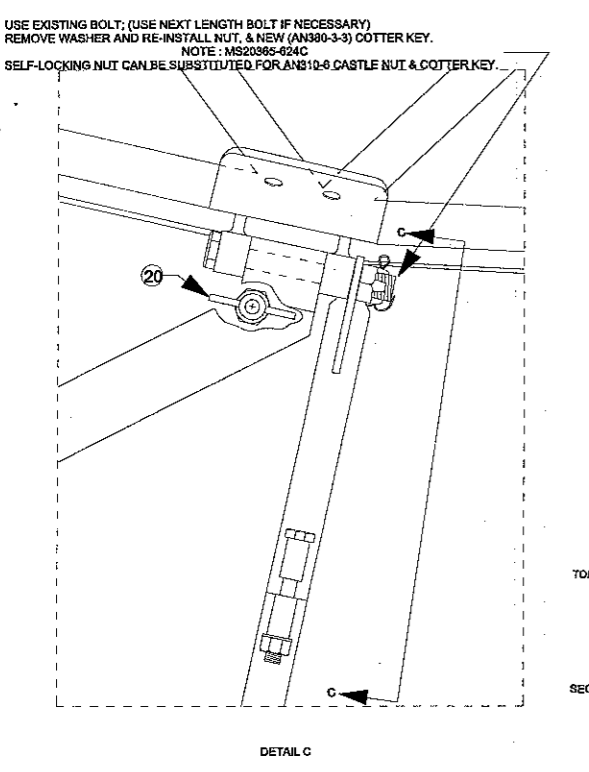
FABRIC MAY BE PRESENT ON MAIN LANDING GEAR "V" ASSEMBLIES. FABRIC MAY BE CUT AND GROMMETED WITH p/n U80122-048 IF DESIRED.



NOTES

- FOR INSTALLATION ON FLOATS SEE AIRGLAS INSTALLATION MANUAL LC18/LTC18-105 (SEC. 5.2)
- POD KIT IS FURNISHED WITH DIMPLES IN MOLD, TO IDENTIFY HOLES FOR AFT CROSS WIRES OF FLOAT ATTACHING GEAR. ENLARGE THESE HOLES TO 3/4 INCH DIAMETER BEFORE INSTALLING FLOATS. (NOTE: LOCATIONS CONFIRMED ON EDO 2000 FLOATS ONLY)

BAGGAGE COMPARTMENT IS LIMITED TO A MAXIMUM OF 57 LBS WITH FULL POD FUEL. TOTAL COMBINED POD FUEL AND BAGGAGE MUST NOT EXCEED 165 LBS.



NO.	QTY	CODE	IDENT. NO.	PART NUMBER	DESCRIPTION	STOCK SIZE	MATERIAL	MATERIAL SPEC.	LTS 1000	FINISH	CALC. UNIT	ACT. WT	ZONE
23	1	17564		LTC18-2B-2	STRAP								
22	1	17564		LTC18-2B-1	DOUBLER								
21	1	17564		LTC18-2B	REAR DOOR								H1
20	1			CCA-1600	VENT								H3
19	1	17564		AG34004	FUEL CAP								H3
18	1			S5A-200	SPRING								H3
17	2			S5A-250	SPRING								H3
16	3			GA5-375	GROMMET								H3
15	3			AJ5-45	STUD, DZUS								H3
14	1			MS20257P2	AI. HINGE								G3
13	2			AN365-1032	NUT								C4
12	2			AN960-10	WASHER								C4
11	2			AN3-4A	BOLT								C4
10	4			AN365-42B	NUT								E7
9	4			AN960-416	WASHER								E7
8	4	17564		AN-24A OR MS20721-16	BOLT (MODIFIED)								E7
7	2	17564		LTC18-8	CLAMP								H2
6	2	17564		LTC18-6	STRAP ASSY.								H3
5	2	17564		LTC18-5	STRAP ASSY.								H2
4	1	17564		LTC18-4	STRAP ASSY.								G3
3	1	17564		LTC18-3	STRAP ASSY.								G2
2	1	17564		LTC18-2	DOOR								H3
1	1	17564		LTC18-1	CARGO POD								G3
X	1	17564		LTC18	CARGO POD KIT								G7

LIST OF MATERIALS

UNLESS OTHERWISE SPECIFIED DIMENSIONS ARE IN INCHES	CONTRACT NO.	Airglas, Inc. Anchorage, Alaska	
PA-18AS DECIMALS 1/16 ANGLES 30, 45, 60, 90, 120, 150, 180	SPEC. CONTROL NO.	LTC18 FUEL / CARGO POD INSTALLATION	
PA-18A		Drawn by: Gary Landes	Scale: Do Not Scale
PA-18S		Date: 4-26-95	Sheet 1 OF 1
PA-18			
NEXT ASSY. USED ON			