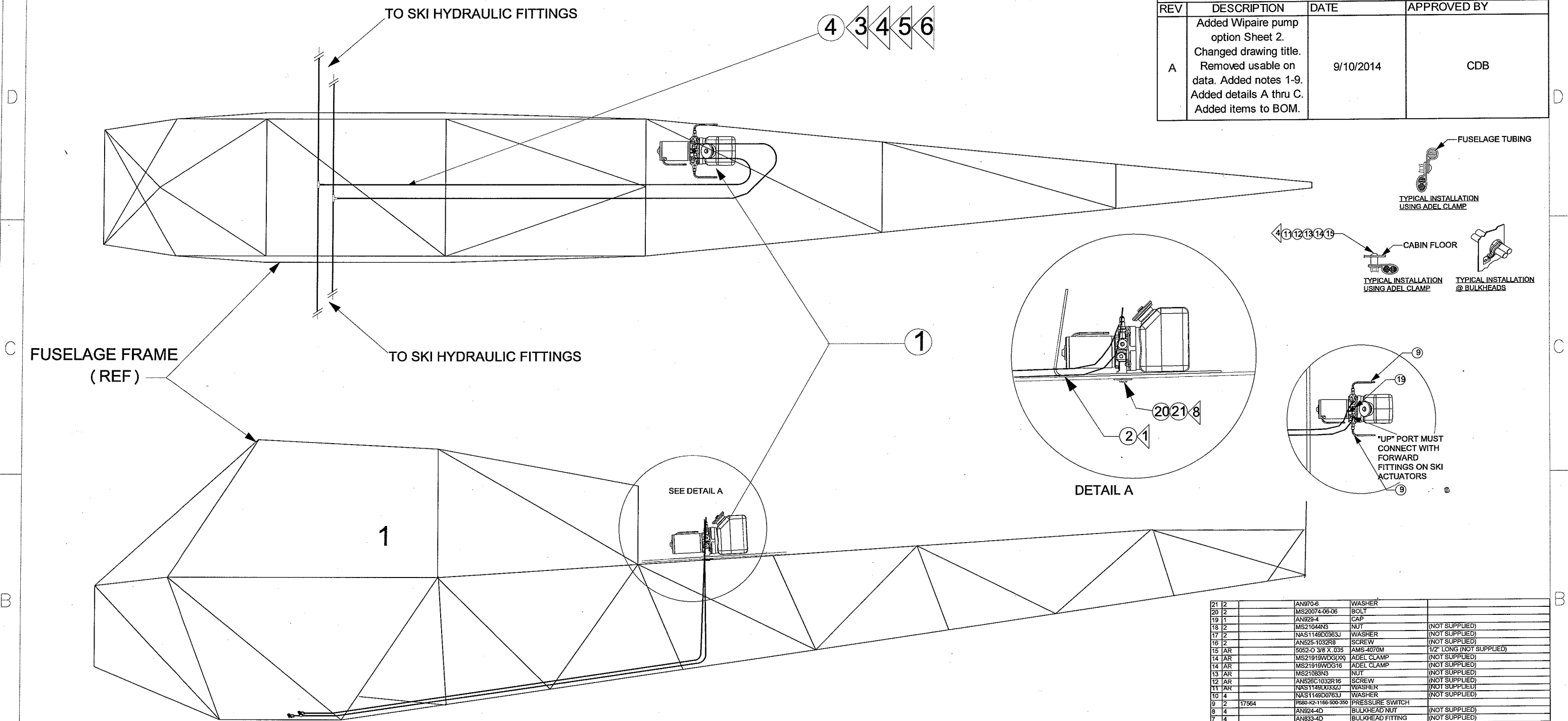


8 7 6 5 4 3 2 1

REVISIONS			
REV	DESCRIPTION	DATE	APPROVED BY
A	Added Wipaire pump option Sheet 2. Changed drawing title. Removed usable on data. Added notes 1-9. Added details A thru C. Added items to BOM.	9/10/2014	CDB



- NOTES:
- 1 LH3600-20 BRACKET MAY BE OMITTED IF PUMP MOUNTED TO PLYWOOD BATTERY SHELF.
  - 2 RESERVED
  - 3 ROUTE ALL HOSES CLEAR OF CONTROLS, ELECTRICAL, AND FUEL LINES. USE EXISTING BULKHEAD HOLES.
  - 4 SECURE HOSES AT MAXIMUM OF 24" INTERVALS. CHAFE PROTECT AT ALL BULKHEADS. AVOID HIGH POINTS ALONG HOSE RUNS.
  - 5 FABRICATE LINES IAW AC43.13-1B CHAPTER 9 PARAGRAPH 9-30(d).
  - 6 (OPTIONAL) FABRICATE LINES IN FUSELAGE IAW AC43.13-1B CHAPTER 9 PARAGRAPH 9-30(a) & 9-30(b), USING 1/4" 5052-O (AMS-4070M), AN818-4D, AND MS20819-4D.
  - 7 RESERVED.
  - 8 SAFETY WITH .040 SS SAFETY WIRE.
  - 9 INSTALLER RESPONSIBLE FOR FAA APPROVAL OF ALTERNATE LOCATIONS OF COMPONENTS.

NO.	QTY	CODE-IDENT-NO	PART NO.	DESCRIPTION	NOTES
21	2		AN970-6	WASHER	
20	2		MS20074-06-06	BOLT	
19	1		AN929-4	CAP	
18	2		MS21044N3	NUT	(NOT SUPPLIED)
17	2		NAS1149D0363J	WASHER	(NOT SUPPLIED)
16	2		AN525-1032R8	SCREW	(NOT SUPPLIED)
15	AR		5052-O 3/8 X .035	AMS-4070M	1/2" LONG (NOT SUPPLIED)
14	AR		MS21919WDG16	ADEL CLAMP	(NOT SUPPLIED)
14	AR		MS21919WDG16	ADEL CLAMP	(NOT SUPPLIED)
13	AR		MS21083N3	NUT	(NOT SUPPLIED)
12	AR		AN526C1032R16	SCREW	(NOT SUPPLIED)
11	AR		NAS1149D033ZJ	WASHER	(NOT SUPPLIED)
10	4		NAS1149D0763J	WASHER	(NOT SUPPLIED)
9	2	17564	P880-K2-1166-900-350	PRESSURE SWITCH	(NOT SUPPLIED)
8	4		AN824-4D	BULKHEAD NUT	(NOT SUPPLIED)
7	4		AN833-4D	BULKHEAD FITTING	(NOT SUPPLIED)
6	2		AN824-4D	"T" FITTING	(NOT SUPPLIED)
5	12		300-4S	STRATOFLEX FITTING	846-4S AND 643-4S IF REQUIRED (NOT SUPPLIED)
4	AR		111-4	STRATOFLEX HOSE	FABRICATE TO FIT (ANY MIL-H-8794-4 ACCEPTABLE) ALSO SEE NOTE 6.
3	2	17564	PA3503-4-4	HYDRAULIC FITTING 90 DEG.	
2	1	17564	LH3600-20	PUMP BRACKET	
1	AR	17564	108AEC32-PLB-1H-08-08-Y2	PUMP	12 VOLT
1	AR	17564	108BEC32-PLB-1H-08-08-Y2	PUMP	24 VOLT
				DESCRIPTION	
				BILL OF MATERIALS	

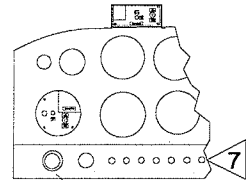
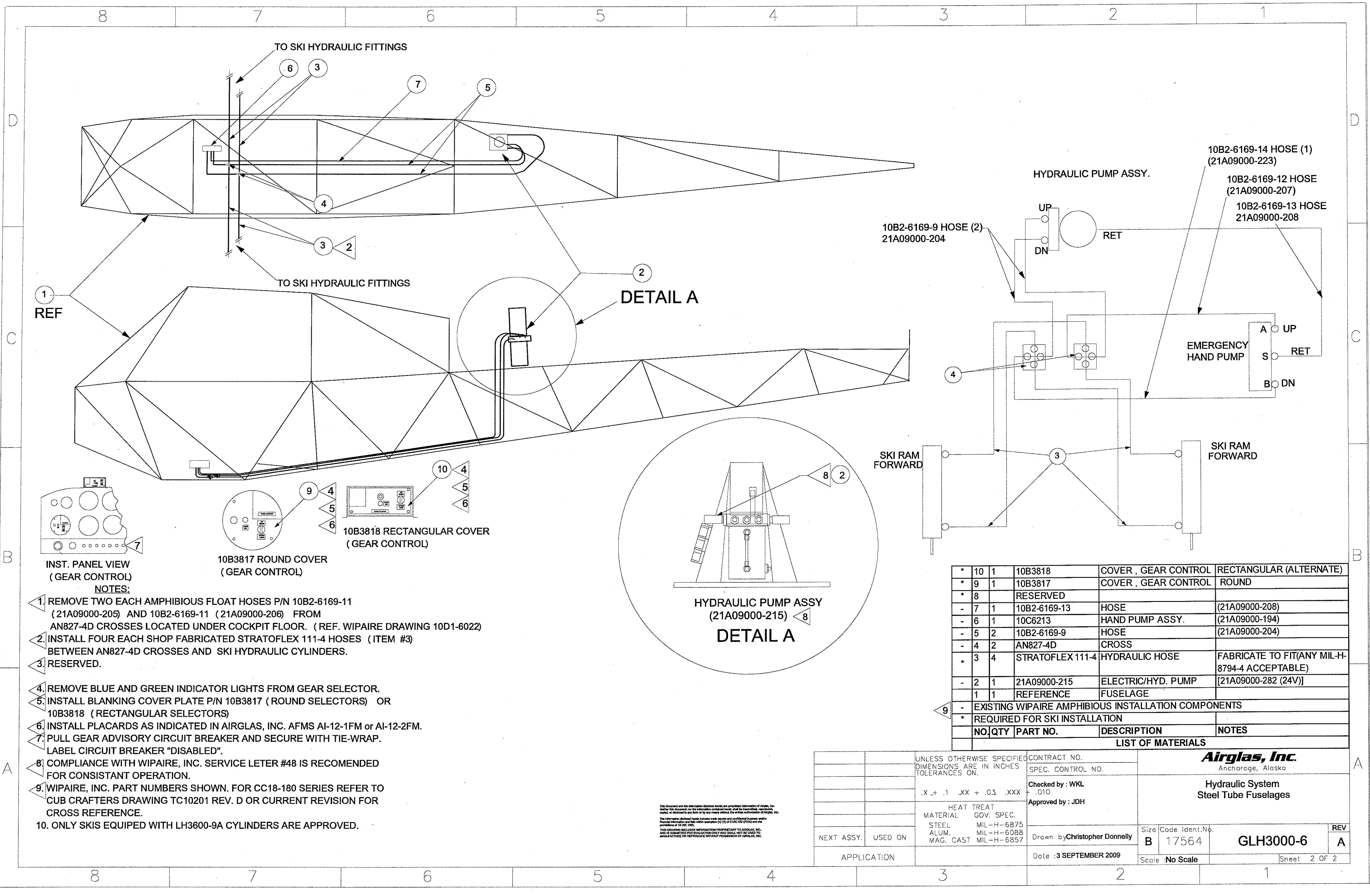
This document and the information disclosed herein are proprietary information of Airglas, Inc. Neither this document nor the information contained herein shall be transmitted, reproduced, copied, or disclosed in any form or by any means without the written authorization of Airglas, Inc.

The information disclosed herein includes trade secrets and confidential business and/or financial information and falls within exemption (b) (4) of 5 USC 552 (FOIA) and the prohibition of 18 USC 1905.

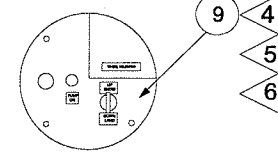
THIS DRAWING INCLUDES INFORMATION PROPRIETARY TO AIRGLAS, INC. AND IS SUBMITTED FOR EVALUATION ONLY AND SHALL NOT BE USED TO MANUFACTURE OR REPRODUCE WITHOUT PERMISSION OF AIRGLAS, INC.

UNLESS OTHERWISE SPECIFIED DIMENSIONS ARE IN INCHES TOLERANCES ON:	CONTRACT NO.	<b>Airglas, Inc.</b> Anchorage, Alaska <b>Hydraulic System</b> <b>Steel Tube Fuselages</b>	
.X + .1 .XX + .03 .XXX	SPEC. CONTROL NO.		
HEAT TREAT MATERIAL GOV. SPEC.	Checked by : WKL .010	Size Code Ident.No.	REV
STEEL MIL-H-6875	Approved by : JDH	B 17564	A
ALUM. MIL-H-6088	Drawn by Christopher Donnelly	GLH3000-6	
MAG. CAST MIL-H-6857	Date : 3 SEPTEMBER 2009	Scale : No Scale	Sheet 1 OF 2

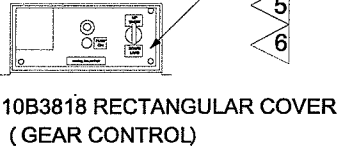
8 7 6 5 4 3 2 1



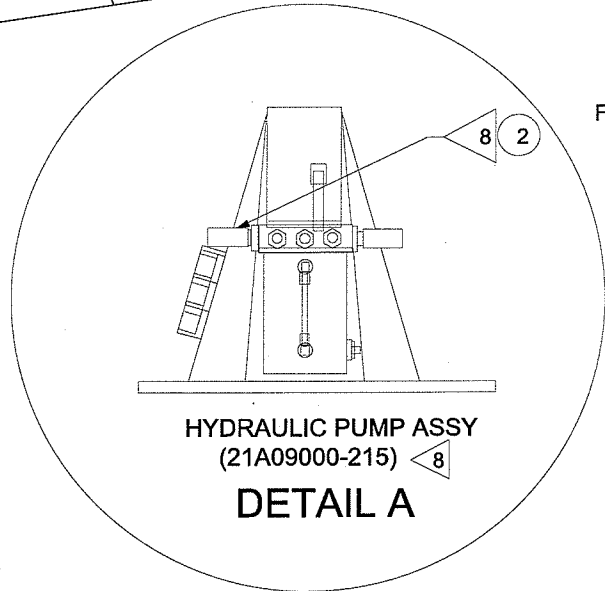
INST. PANEL VIEW (GEAR CONTROL)



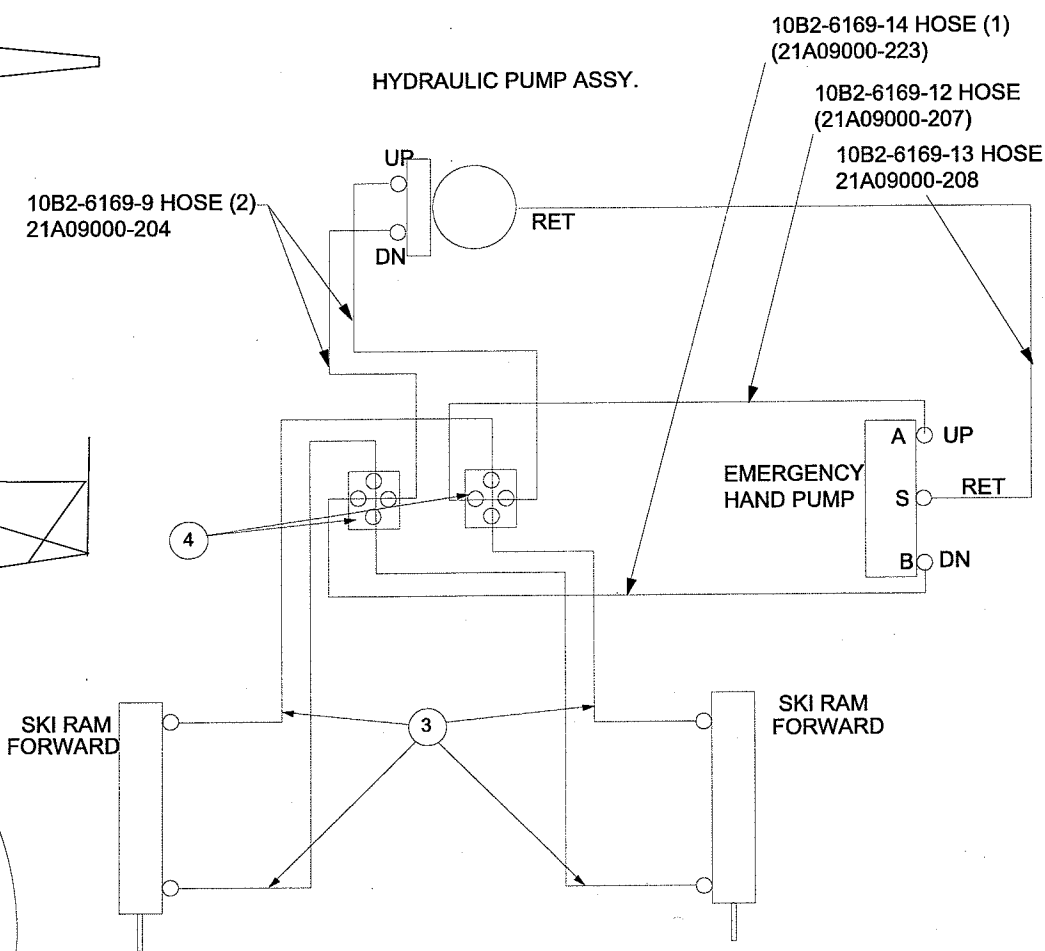
10B3817 ROUND COVER (GEAR CONTROL)



10B3818 RECTANGULAR COVER (GEAR CONTROL)



HYDRAULIC PUMP ASSY (21A09000-215) **DETAIL A**



NO.	QTY	PART NO.	DESCRIPTION	NOTES
* 10	1	10B3818	COVER, GEAR CONTROL	RECTANGULAR (ALTERNATE)
* 9	1	10B3817	COVER, GEAR CONTROL	ROUND
* 8		RESERVED		
- 7	1	10B2-6169-13	HOSE	(21A09000-208)
- 6	1	10C6213	HAND PUMP ASSY.	(21A09000-194)
- 5	2	10B2-6169-9	HOSE	(21A09000-204)
- 4	2	AN827-4D	CROSS	
* 3	4	STRATOFLEX 111-4	HYDRAULIC HOSE	FABRICATE TO FIT(ANY MIL-H-8794-4 ACCEPTABLE)
- 2	1	21A09000-215	ELECTRIC/HYD. PUMP	[21A09000-282 (24V)]
1	1	REFERENCE	FUSELAGE	
9			EXISTING WIPAIRE AMPHIBIOUS INSTALLATION COMPONENTS	
* REQUIRED FOR SKI INSTALLATION				

- NOTES:**
- REMOVE TWO EACH AMPHIBIOUS FLOAT HOSES P/N 10B2-6169-11 (21A09000-205) AND 10B2-6169-11 (21A09000-206) FROM AN827-4D CROSSES LOCATED UNDER COCKPIT FLOOR. (REF. WIPAIRE DRAWING 10D1-6022)
  - INSTALL FOUR EACH SHOP FABRICATED STRATOFLEX 111-4 HOSES (ITEM #3) BETWEEN AN827-4D CROSSES AND SKI HYDRAULIC CYLINDERS.
  - RESERVED.
  - REMOVE BLUE AND GREEN INDICATOR LIGHTS FROM GEAR SELECTOR.
  - INSTALL BLANKING COVER PLATE P/N 10B3817 (ROUND SELECTORS) OR 10B3818 (RECTANGULAR SELECTORS)
  - INSTALL PLACARDS AS INDICATED IN AIRGLAS, INC. AFMS AI-12-1FM or AI-12-2FM.
  - PULL GEAR ADVISORY CIRCUIT BREAKER AND SECURE WITH TIE-WRAP. LABEL CIRCUIT BREAKER "DISABLED".
  - COMPLIANCE WITH WIPAIRE, INC. SERVICE LETER #48 IS RECOMENDED FOR CONSISTANT OPERATION.
  - WIPAIRE, INC. PART NUMBERS SHOWN. FOR CC18-180 SERIES REFER TO CUB CRAFTERS DRAWING TC10201 REV. D OR CURRENT REVISION FOR CROSS REFERENCE.
  - ONLY SKIS EQUIPED WITH LH3600-9A CYLINDERS ARE APPROVED.

This document and the information disclosed herein are proprietary information of Airglas, Inc. Neither this document nor the information contained herein shall be transmitted, reproduced, copied, or disclosed in any form or by any means without the written permission of Airglas, Inc. The information contained herein is the property of Airglas, Inc. and is not to be used for any purpose other than that for which it was intended. This drawing includes information proprietary to Airglas, Inc. and is submitted for evaluation only and shall not be used to manufacture or reproduce without permission of Airglas, Inc.

UNLESS OTHERWISE SPECIFIED DIMENSIONS ARE IN INCHES TOLERANCES ON:	CONTRACT NO.	<b>Airglas, Inc.</b> Anchorage, Alaska	
.X + .1 .XX + .03 .XXX	SPEC. CONTROL NO.	Hydraulic System Steel Tube Fuselages	
HEAT TREAT MATERIAL GOV. SPEC.	Checked by: WKL + .010 Approved by: JDH	Size Code Ident.No.	REV
STEEL MIL-H-6875 ALUM. MIL-H-6088 MAG. CAST MIL-H-6857	Drawn by: Christopher Donnelly	B 17564	GLH3000-6 A
NEXT ASSY. USED ON	Date: 3 SEPTEMBER 2009	Scale: No Scale	Sheet 2 OF 2
APPLICATION			