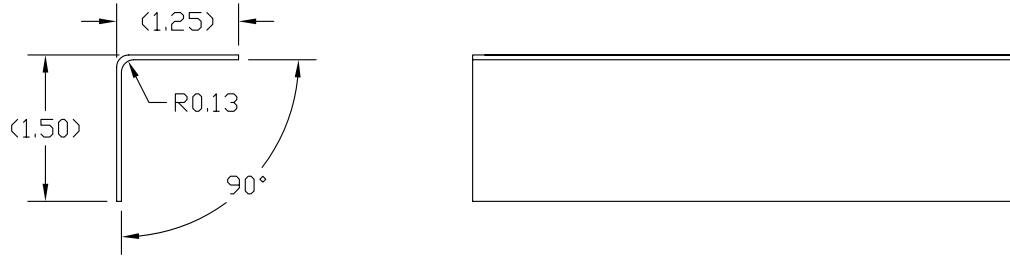
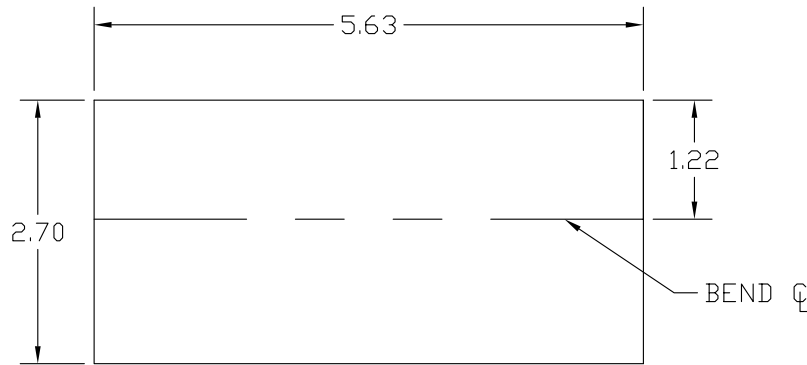


* NOTICE *
 INFORMATION CONTAINED HEREIN IS PROPRIETARY TO AEROTWIN, INC. AND MAY NOT BE DISCLOSED IN WHOLE OR IN PART OR USED FOR ANY DESIGN OR MANUFACTURE UNLESS THE USER POSSESSES DIRECT WRITTEN AUTHORIZATION FROM AEROTWIN, INC..

ISS	DESCRIPTION	INIT	DATE
1	INITIAL RELEASE		
2	PER ECO AT-125	BAS	05/05/08



BENT VIEWS



FLAT PLATE LAYOUT

① P/N FND-SKI-1011

NOTES:

1. DEBURR AND BREAK ALL EDGES.

ITEM	QTY.	PART NO.	DESCRIPTION	DIMENSION	MATERIAL	SPECIFICATION
1	1	FND-SKI-1011	ANGLE	5.65 x 3.0 x 0.049	2024 T3 ALUM	AMS QQ-A-250/4

DRAWN P.Pupator	DATE 01/08/08	TOLERANCES UNLESS STATED OTHERWISE:		AeroTwin, Inc. TITLE ANGLE HYDRAULIC PUMP BRACKET	
CHECKED		.X ± 0.050	.XX ± 0.030		
DESIGN		.XXX ± 0.010	ANGLES ± 1.5°	SHEET 1 OF 1	DRAWING NO. FND-SKI-1011
MANUFACTURE			ALL DIMENSIONS ARE IN INCHES	MOD. NUMBER	NEXT ASSEMBLY
ENGINEERING DEPT. APPROVAL			MACHINED SURFACES: FINISH TO 125 OR BETTER		PLOT SCALE NTS
APPROVAL				DO NOT SCALE PRINT	
EFFECTIVITY PART NUMBER	EFFECTIVITY GENERAL				