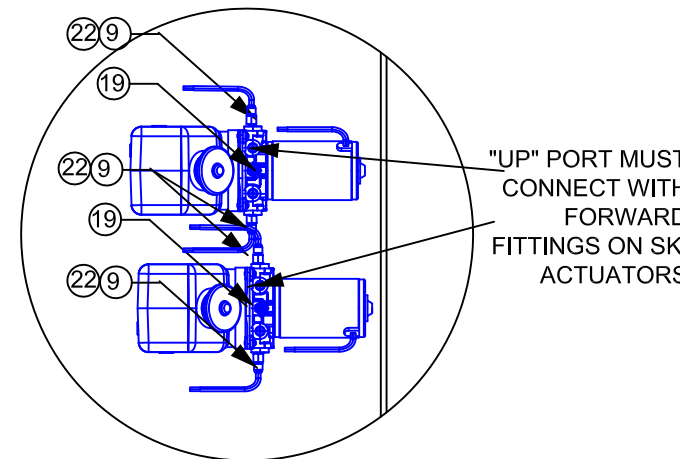
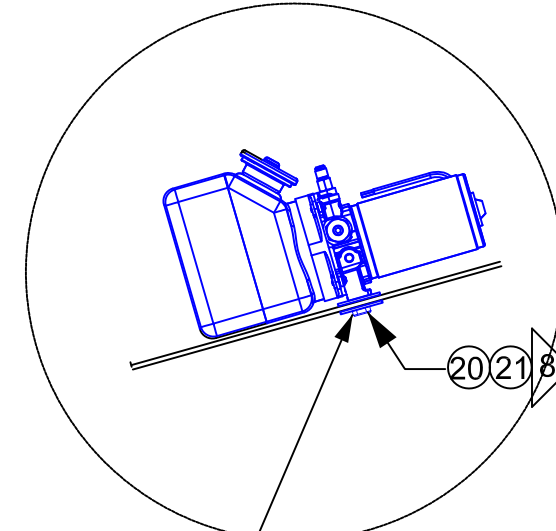


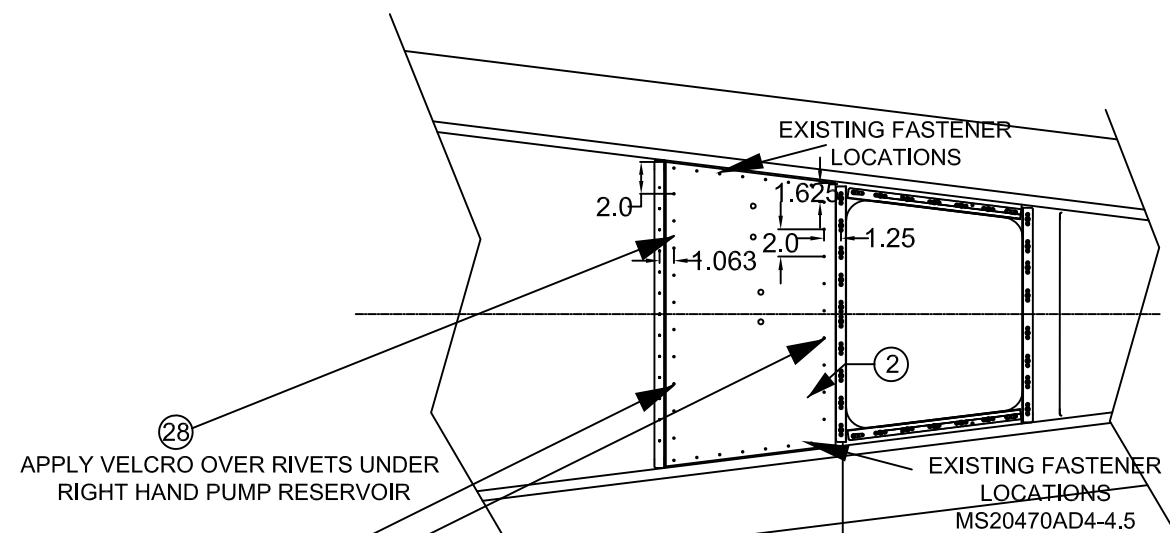
**B-B**



**A-A**

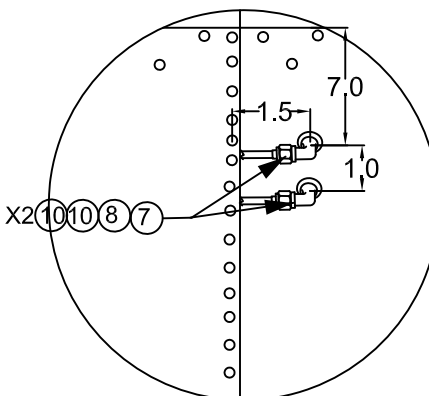


**DETAIL A**  
(SEE DETAIL B FOR PUMP BRACKET INSTALLATION)



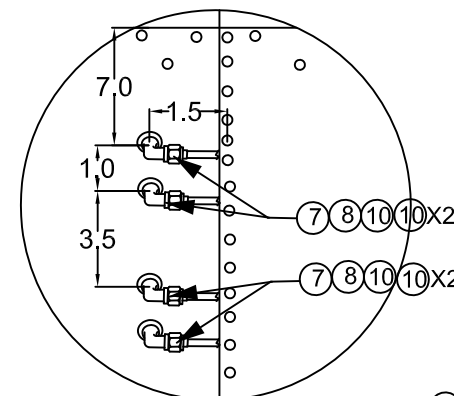
**DETAIL B**  
PUMP BRACKET INSTALLATION

**F.S. 87.125**

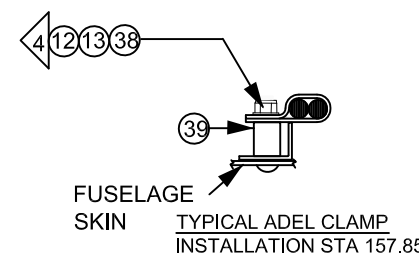
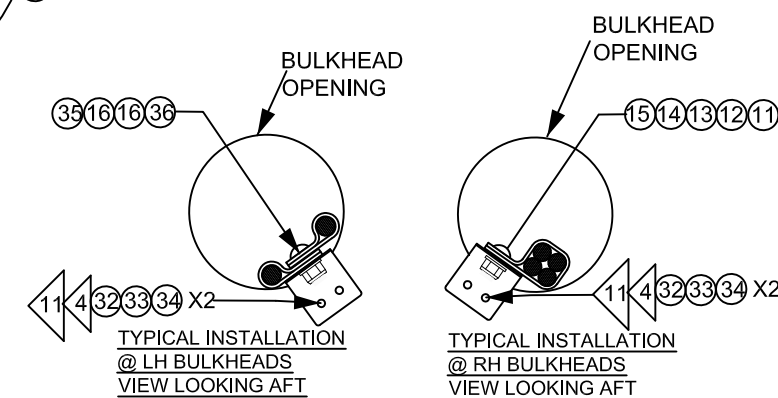
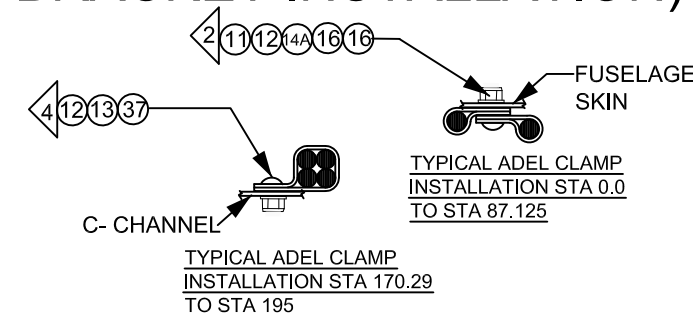


**DETAIL C**

**F.S. 87.125**



**DETAIL D**



- NOTES:**
- HOSES FROM FUSELAGE TO SKIS OMITTED FOR CLARITY.
  - LOCATE RIV-NUTS AT LEAST .75" FROM EXISTING FASTENERS OR HOLES.
  - ROUTE ALL LINES CLEAR OF CONTROLS, ELECTRICAL, AND FUEL LINES. USE EXISTING BULKHEAD HOLES UNLESS NOTED.
  - SECURE LINES AT MINIMUM OF 24" INTERVALS. AVOID HIGH POINTS ALONG LINE RUNS.
  - FABRICATE HOSES IAW AC43.13-1B CHAPTER 9 PARAGRAPH 9-30(d).
  - FABRICATE LINES IN FUSELAGE IAW AC43.13-1B CHAPTER 9 PARAGRAPH 9-30(a) & 9-30(b).
  - ENSURE DRAIN HOLES ARE CLEAR. DRILL NEW .125 IF REQUIRED.
  - SAFETY WITH .040 SS SAFETY WIRE.
  - INSTALLER RESPONSIBLE FOR FAA APPROVAL OF ALTERNATE LOCATIONS OF COMPONENTS.
  - AN, MS, NAS, AND AS EQUIVALENT COMPONENTS MAY BE SUBSTITUTED.

UNLESS OTHERWISE SPECIFIED DIMENSIONS ARE IN INCHES		CONTRACT NO.	<b>Airglas, Inc.</b> Anchorage, Alaska	
DECIMALS X ± .1 XX ± .1 XXX ± .1		SPEC. CONTROL NO.	HYDRAULIC INSTALLATION IN GA8 SERIES	
HEAT TREAT STEEL MIL - H - 6875 ALUM. MIL - H - 6088 MAG. CAST MIL - H - 6857		Approved by:	Size Code Ident No.	REV
NEXT ASSY.	USED ON	Checked by: CDB	B 17564	LH4000-GA8-HYD (-)
APPLICATION		Date: OCT. 1, 2017	Scale: Do Not Scale	Sheet 2 OF 3