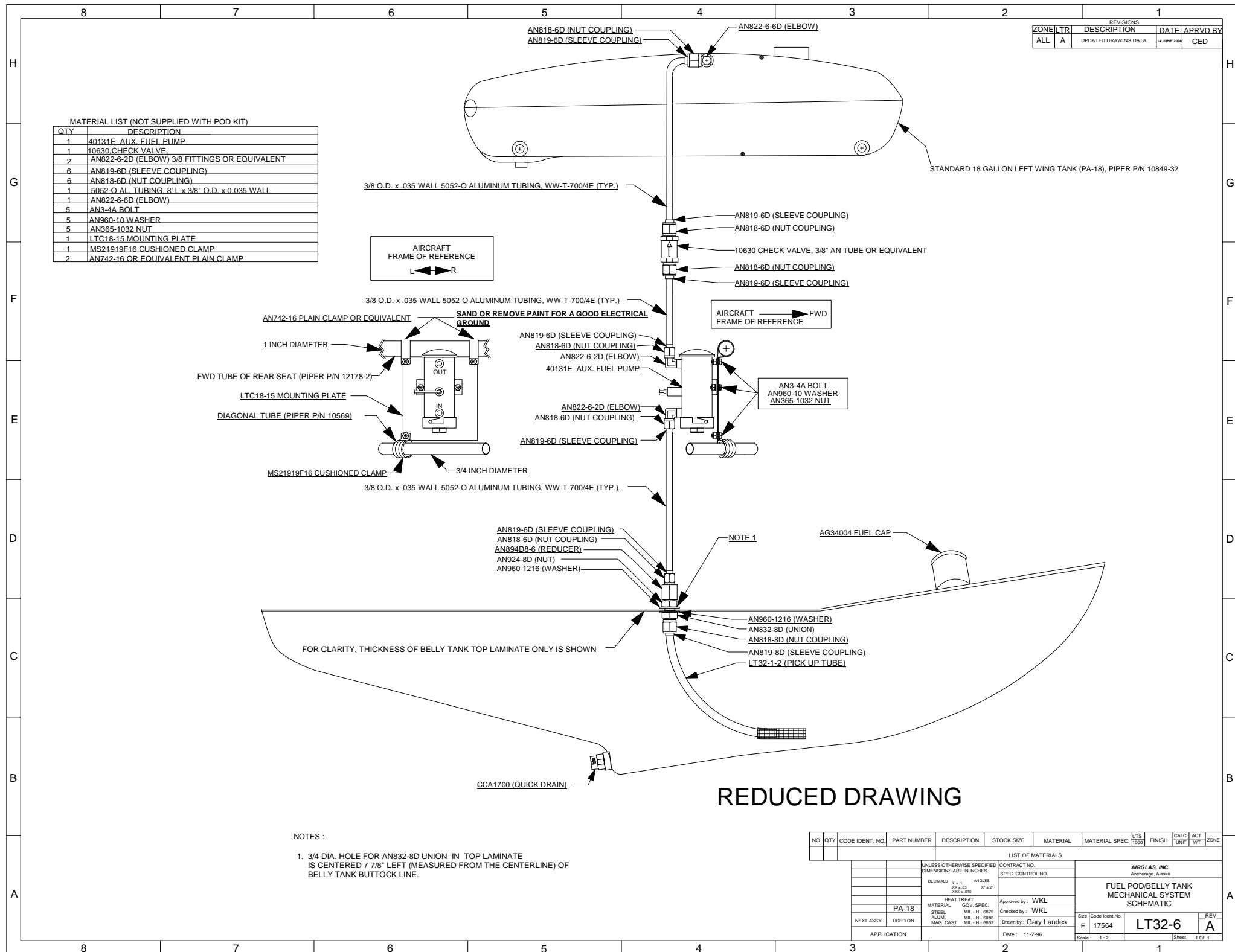


ZONE	LTR	REVISIONS	DATE	APPROV BY
ALL	A	UPDATED DRAWING DATA	24 JUNE 2008	CED

NO.	QTY	CODE	IDENT. NO.	PART NUMBER	DESCRIPTION	STOCK SIZE	MATERIAL	MATERIAL SPEC.	UTS T000	FINISH	CALC. UNIT	ACT. WT	ZONE
15	1			AG34004	FUEL CAP								G3
14	4			AN365-1032	NUT								C4
13	4			AN960-10	WASHER								C4
12	4			AN3-4A	BOLT								C4
11	3			AN365-428	NUT								E5
10	3			AN960-416	WASHER								E5
9	3			AN4-24A or MS91727-16	BOLT								E5
8	4			LTC18-8	CLAMP								G7
7	1			4130-30-2	STRAP ASSY.								G7
6	1			4130-3-2	STRAP ASSY.								G7
5	1			4130-34-3	STRAP ASSY.								G6
4	1			4130-5-3	STRAP ASSY.								G6
3	1			4130-29-4	STRAP ASSY.								G6
2	1			4130-7-4	STRAP ASSY.								G6
1	1			LT32PA-18-1	FUEL POD								G6
1	1			LT32PA-18	POD KIT								G3

LIST OF MATERIALS		CONTRACT NO.		AIRGLAS, INC. Anchorage, Alaska	
UNLESS OTHERWISE SPECIFIED DIMENSIONS ARE IN INCHES		SPEC. CONTROL NO.		LT32PA-18 FUEL POD/BELLY TANK INSTALLATION DRAWING	
HEAT TREAT GOV. SPEC.		Approved by: WKL		Size Code Ident No.	
MATERIAL: PA-18	STEEL ML - H - 6875	Checked by: WKL		D 17564	
NEXT ASSY: USED ON	ALUM ML - H - 6006	Drawn by: Gary Landes		LT32PA-18	
APPLICATION	MAG. CAST ML - H - 6057	Date: 11-13-96		Rev: A	
		Specs: NOTED		Sheet: 1 OF 1	



MATERIAL LIST (NOT SUPPLIED WITH POD KIT)

QTY	DESCRIPTION
1	40131E AUX. FUEL PUMP
1	10630 CHECK VALVE
2	AN822-6-2D (ELBOW) 3/8 FITTINGS OR EQUIVALENT
6	AN819-6D (SLEEVE COUPLING)
6	AN818-6D (NUT COUPLING)
1	5052-O AL TUBING, 8' L x 3/8" O.D. x 0.035 WALL
1	AN822-6-6D (ELBOW)
5	AN3-4A BOLT
5	AN960-10 WASHER
5	AN365-1032 NUT
1	LTC18-15 MOUNTING PLATE
1	MS21919F16 CUSHIONED CLAMP
2	AN742-16 OR EQUIVALENT PLAIN CLAMP

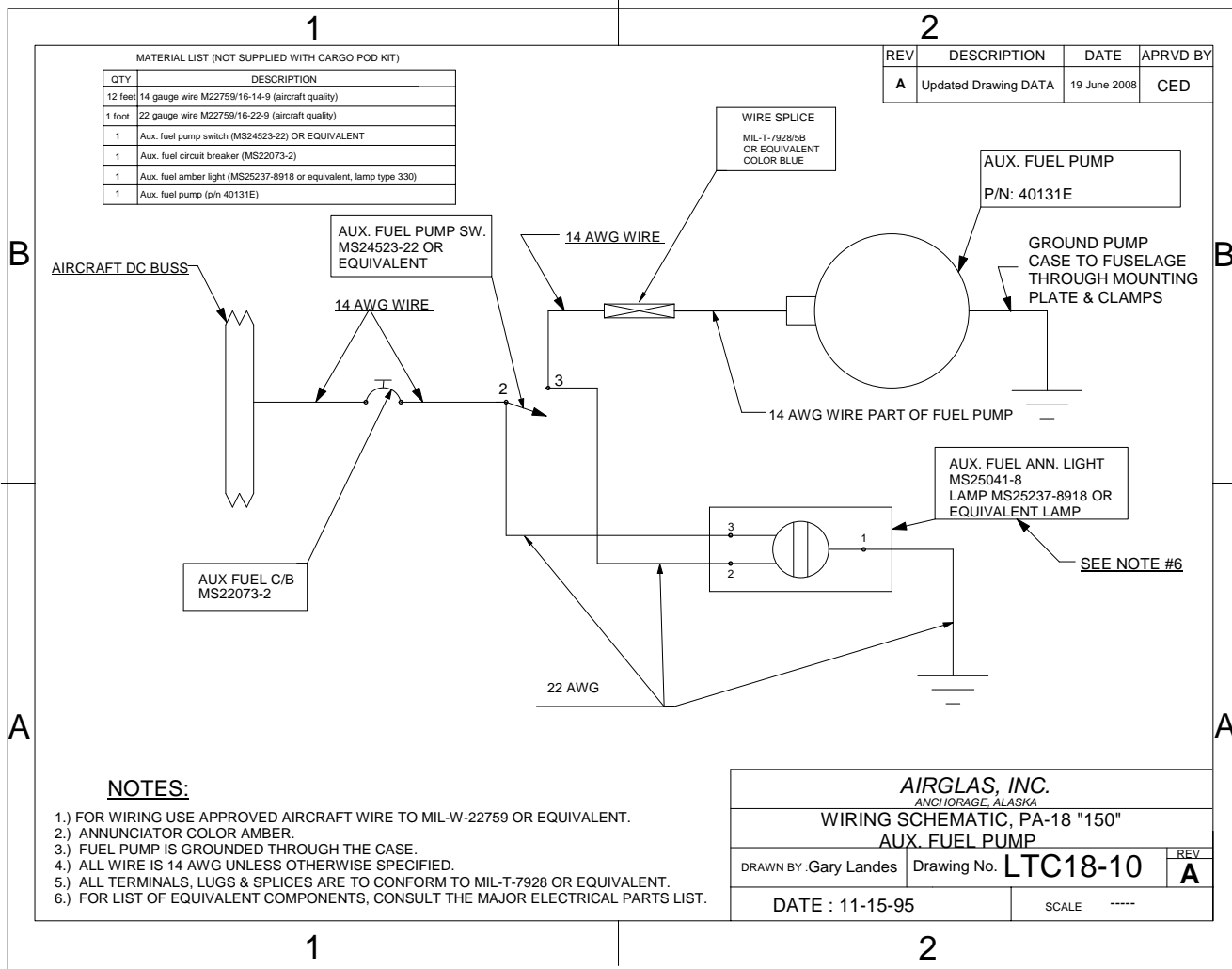
REVISIONS			
ZONE	LTR	DESCRIPTION	DATE
ALL	A	UPDATED DRAWING DATA	14 JUNE 2008
			APRVD BY CED

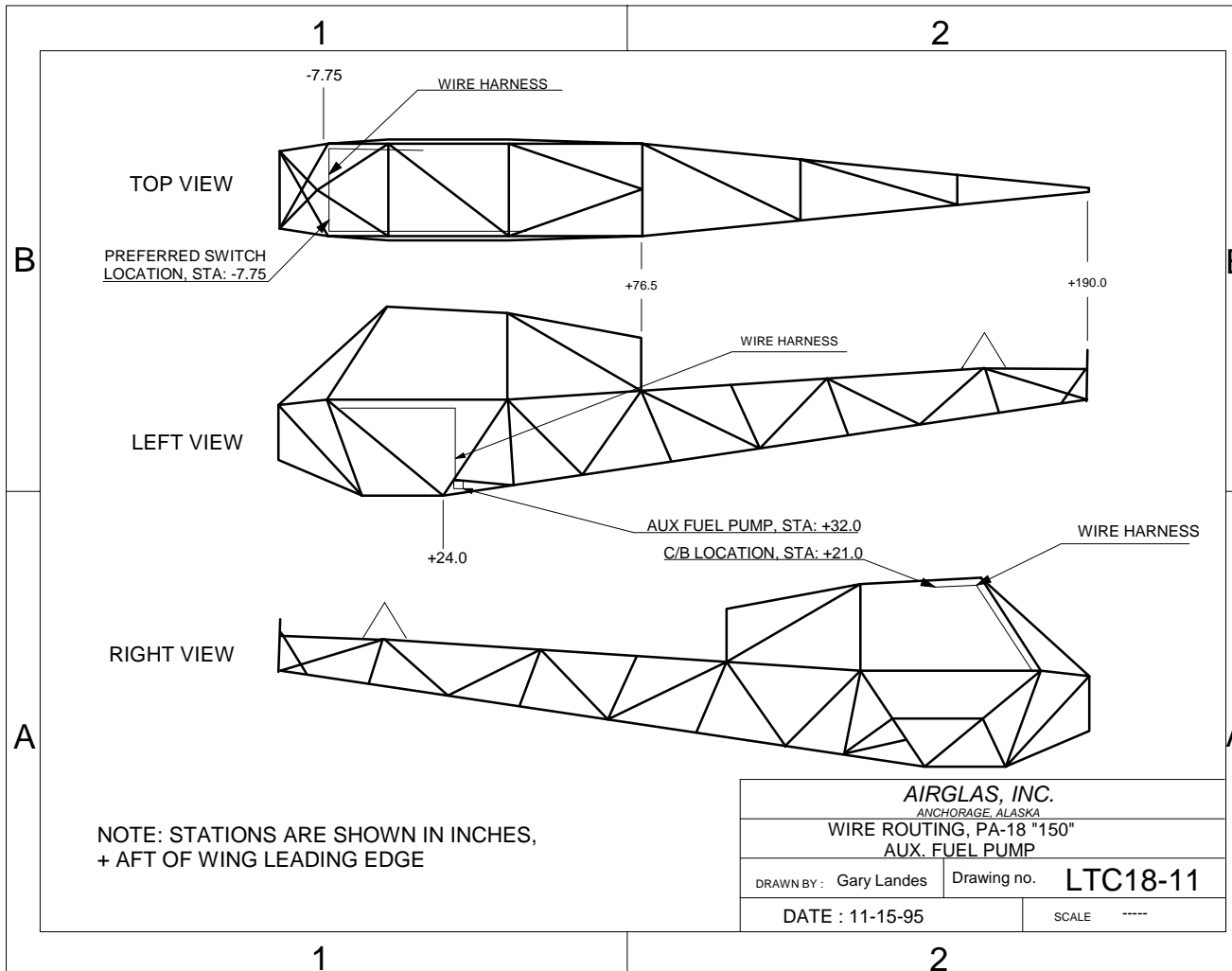
NOTES:

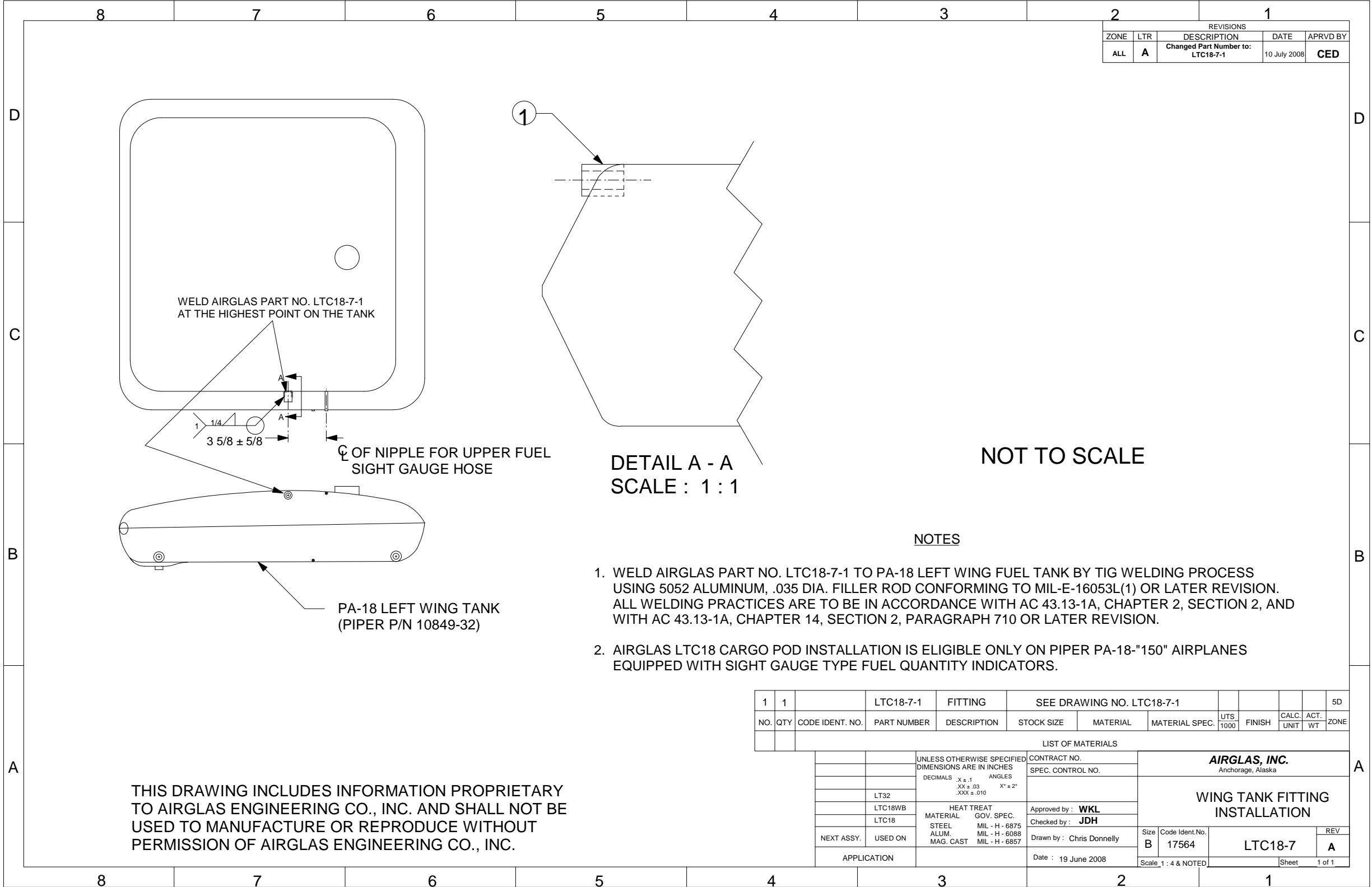
1. 3/4 DIA. HOLE FOR AN832-8D UNION IN TOP LAMINATE IS CENTERED 7 7/8" LEFT (MEASURED FROM THE CENTERLINE) OF BELLY TANK BUTTOCK LINE.

REDUCED DRAWING

NO.	QTY	CODE IDENT. NO.	PART NUMBER	DESCRIPTION	STOCK SIZE	MATERIAL	MATERIAL SPEC.	UNITS	FINISH	CALC.	ACT.	ZONE
LIST OF MATERIALS												
UNLESS OTHERWISE SPECIFIED DIMENSIONS ARE IN INCHES												
CONTRACT NO. AIRGLAS, INC. Anchorage, Alaska												
SPEC. CONTROL NO. FUEL POD/BELLY TANK MECHANICAL SYSTEM SCHEMATIC												
HEAT TREAT: SOV. SPEC. Approved by: WKL												
MATERIAL: STEEL MIL-H-6875; ALUM MIL-H-6808; MAG. CAST MIL-H-6857												
Checked by: WKL												
Drawn by: Gary Landes												
Date: 11-7-96												
Scale: 1:2												
Size Code Ident. No. E 17564												
LT32-6												
REV A												
Sheet 1 OF 1												







REVISIONS				
ZONE	LTR	DESCRIPTION	DATE	APRVD BY
ALL	A	Changed Part Number to: LTC18-7-1	10 July 2008	CED

NOT TO SCALE

DETAIL A - A
SCALE : 1 : 1

NOTES

1. WELD AIRGLAS PART NO. LTC18-7-1 TO PA-18 LEFT WING FUEL TANK BY TIG WELDING PROCESS USING 5052 ALUMINUM, .035 DIA. FILLER ROD CONFORMING TO MIL-E-16053L(1) OR LATER REVISION. ALL WELDING PRACTICES ARE TO BE IN ACCORDANCE WITH AC 43.13-1A, CHAPTER 2, SECTION 2, AND WITH AC 43.13-1A, CHAPTER 14, SECTION 2, PARAGRAPH 710 OR LATER REVISION.
2. AIRGLAS LTC18 CARGO POD INSTALLATION IS ELIGIBLE ONLY ON PIPER PA-18-"150" AIRPLANES EQUIPPED WITH SIGHT GAUGE TYPE FUEL QUANTITY INDICATORS.

THIS DRAWING INCLUDES INFORMATION PROPRIETARY TO AIRGLAS ENGINEERING CO., INC. AND SHALL NOT BE USED TO MANUFACTURE OR REPRODUCE WITHOUT PERMISSION OF AIRGLAS ENGINEERING CO., INC.

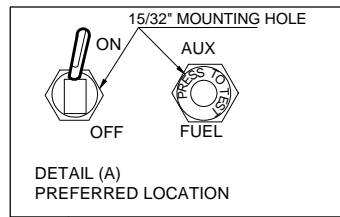
NO.	QTY	CODE IDENT. NO.	PART NUMBER	DESCRIPTION	STOCK SIZE	MATERIAL	MATERIAL SPEC.	UTS 1000	FINISH	CALC. UNIT	ACT. WT	ZONE
1	1		LTC18-7-1	FITTING	SEE DRAWING NO. LTC18-7-1							5D
LIST OF MATERIALS												
				UNLESS OTHERWISE SPECIFIED DIMENSIONS ARE IN INCHES		CONTRACT NO.		AIRGLAS, INC. Anchorage, Alaska				
				DECIMALS .X ± .1 ANGLES X' ± 2"		SPEC. CONTROL NO.		WING TANK FITTING INSTALLATION				
				.XX ± .03 X' ± 2"		HEAT TREAT		Approved by: WKL				
				.XXX ± .010		MATERIAL GOV. SPEC.		Checked by: JDH				
				LTC18WB		STEEL MIL - H - 6875		Drawn by: Chris Donnelly		Size	Code Ident.No.	REV
				LTC18		ALUM. MIL - H - 6088				B	17564	A
				NEXT ASSY. USED ON		MAG. CAST MIL - H - 6857				LTC18-7		
				APPLICATION				Date : 19 June 2008		Scale, 1 : 4 & NOTED		
										Sheet	1 of 1	

1

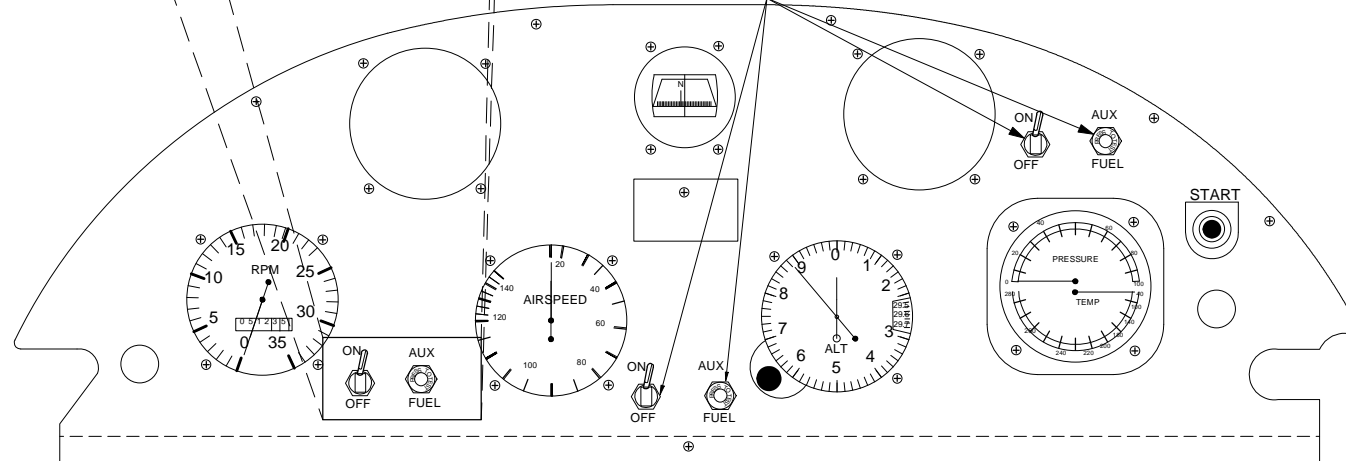
2

NOTES

1. SWITCH AND ANNUNCIATOR LOCATIONS ARE NOT CRITICAL AS LONG AS BOTH ARE LOCATED ON INSTRUMENT PANEL AND IN PLAIN VIEW OF PILOT.
2. SWITCH AND ANNUNCIATOR TO BE LABELED WITH HIGH CONTRAST LETTERING SO AS TO BE VISIBLE UNDER ALL EXPECTED LIGHT CONDITIONS.
3. ADEQUATE LIGHTING MUST BE PROVIDED TO SWITCH AND PLACARD IF AIRCRAFT IS TO BE USED FOR NIGHT FLYING.



(OPTIONAL LOCATIONS)



B

B

A

A

AIRGLAS, INC.
ANCHORAGE, ALASKA

SWITCH INSTALLATION, PA-18 "150"
INSTRUMENT PANEL

DRAWN BY: Gary Landes

Drawing no.

LTC18-8

DATE : 11-15-95

SCALE -----

1

2

1

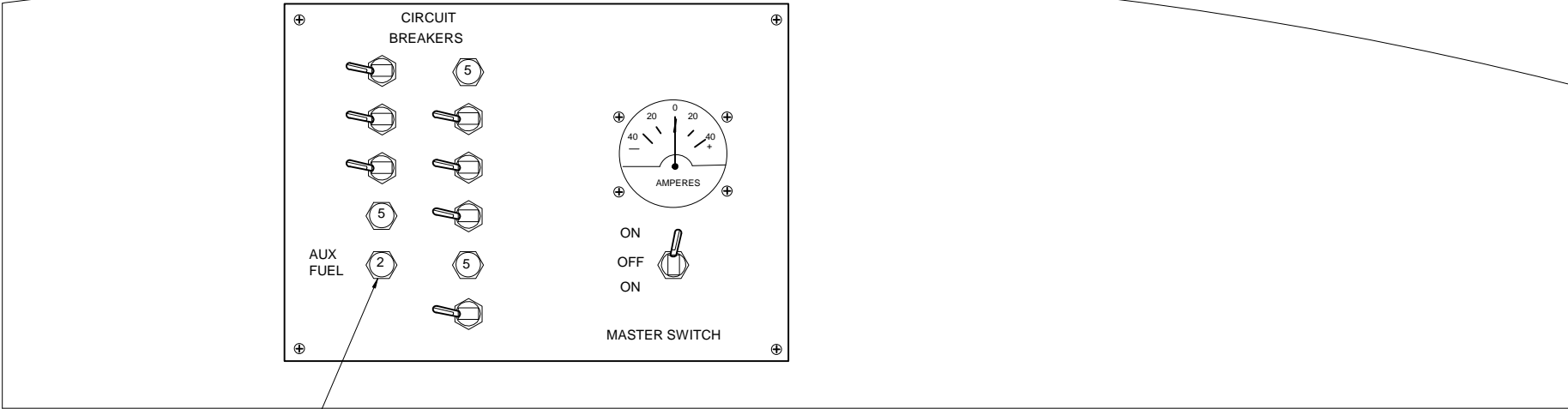
2

B

B

NOTES:

- 1. C/B LOCATION IS NOT CRITICAL AS LONG AS IT IS LOCATED ON THE C/B PANEL AND IS IN PLAIN VIEW OF PILOT.
- 2. C/B TO BE LABELED WITH HIGH CONTRAST LETTERING SO AS TO BE VISIBLE UNDER ALL EXPECTED LIGHT CONDITIONS.
- 3. ADEQUATE LIGHTING MUST BE PROVIDED TO C/B AND PLACARD IF AIRCRAFT IS TO BE USED FOR NIGHT FLYING.



AUX FUEL PUMP C/B

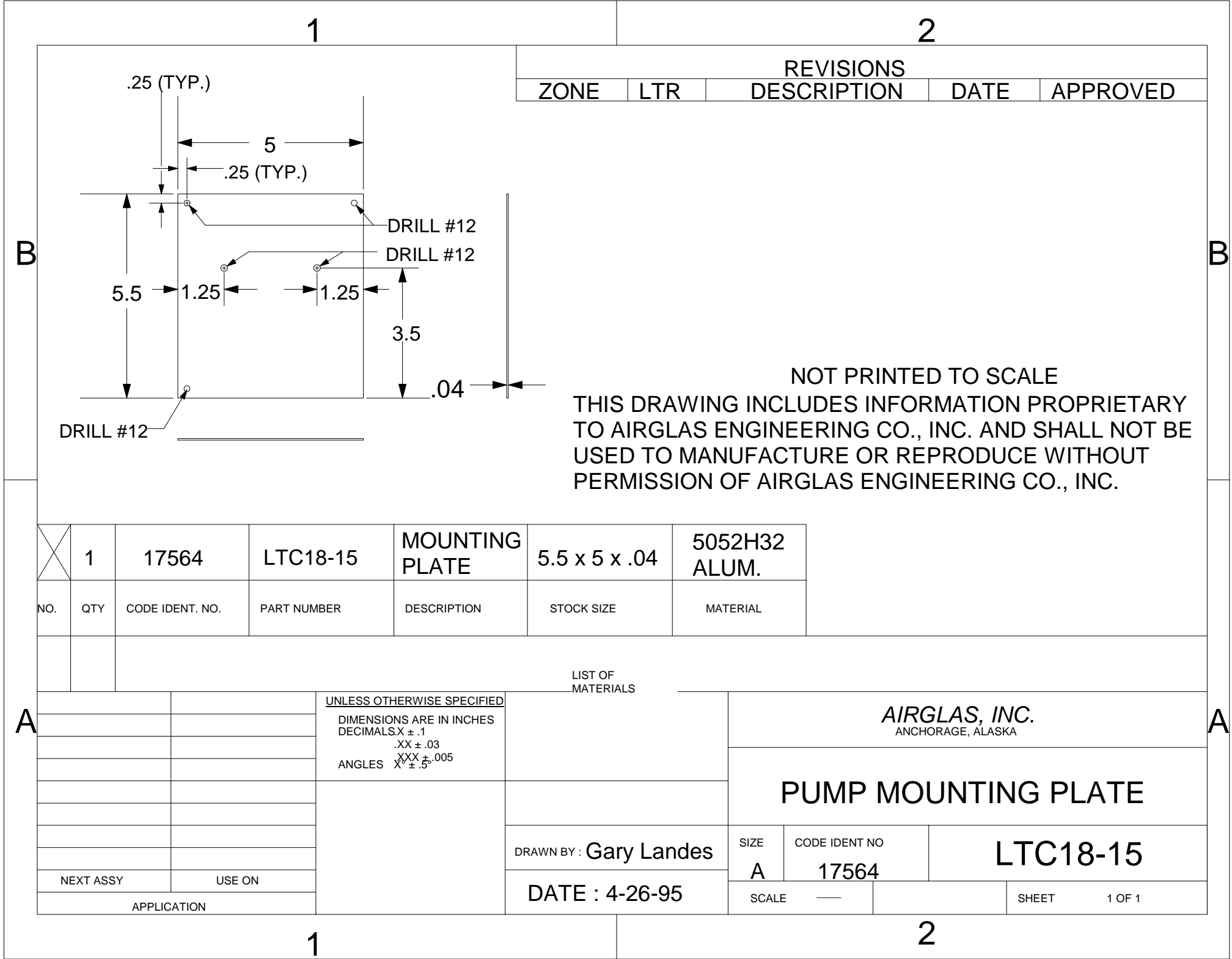
A

A

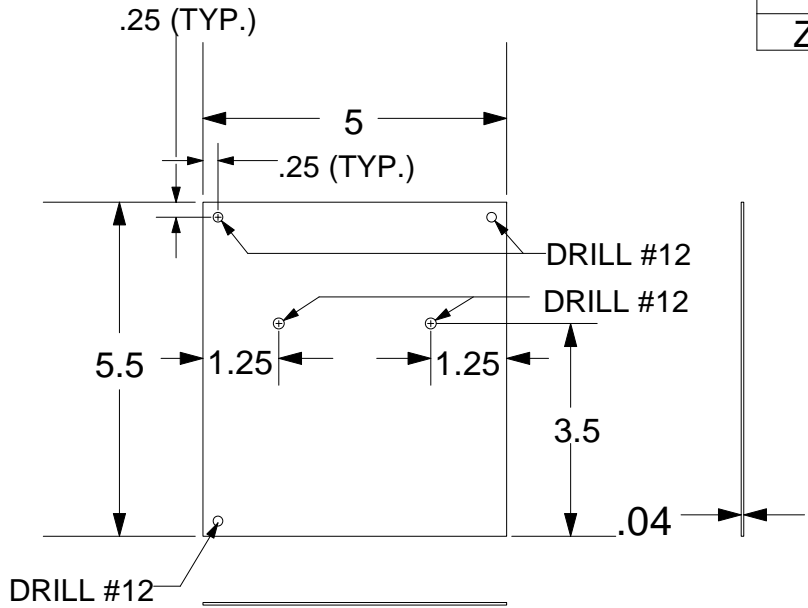
1

2

AIRGLAS, INC. <small>ANCHORAGE, ALASKA</small>	
CIRCUIT BREAKER INSTALLATION, PA-18" 150" C/B PANEL	
DRAWN BY: Gary Landes	Drawing no. LTC18-9
DATE : 11-15-95	SCALE *****



REVISIONS				
ZONE	LTR	DESCRIPTION	DATE	APPROVED



NOT PRINTED TO SCALE
 THIS DRAWING INCLUDES INFORMATION PROPRIETARY TO AIRGLAS ENGINEERING CO., INC. AND SHALL NOT BE USED TO MANUFACTURE OR REPRODUCE WITHOUT PERMISSION OF AIRGLAS ENGINEERING CO., INC.

X	1	17564	LTC18-15	MOUNTING PLATE	5.5 x 5 x .04	5052H32 ALUM.
NO.	QTY	CODE IDENT. NO.	PART NUMBER	DESCRIPTION	STOCK SIZE	MATERIAL

UNLESS OTHERWISE SPECIFIED				LIST OF MATERIALS		AIRGLAS, INC. ANCHORAGE, ALASKA	
DIMENSIONS ARE IN INCHES DECIMALS X ± .1 .XX ± .03 XXX ± .005 ANGLES X ± .5				PUMP MOUNTING PLATE			
DRAWN BY: Gary Landes				SIZE A	CODE IDENT NO 17564	LTC18-15	
DATE: 4-26-95				SCALE —	SHEET 1 OF 1		
NEXT ASSY		USE ON		APPLICATION			